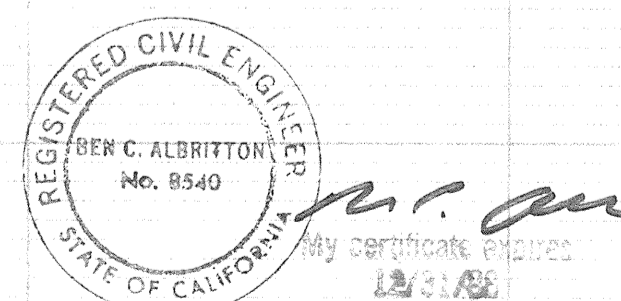
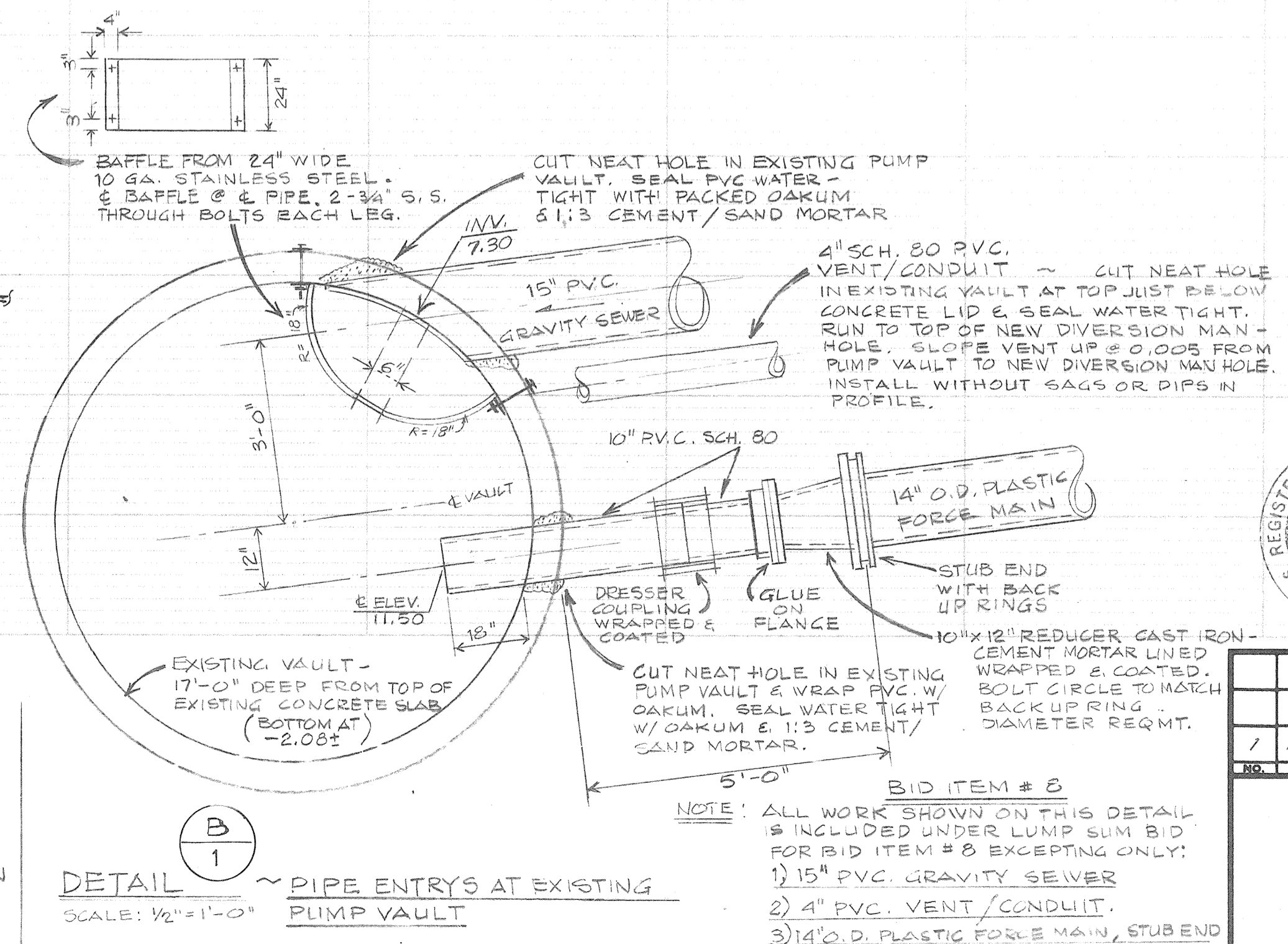
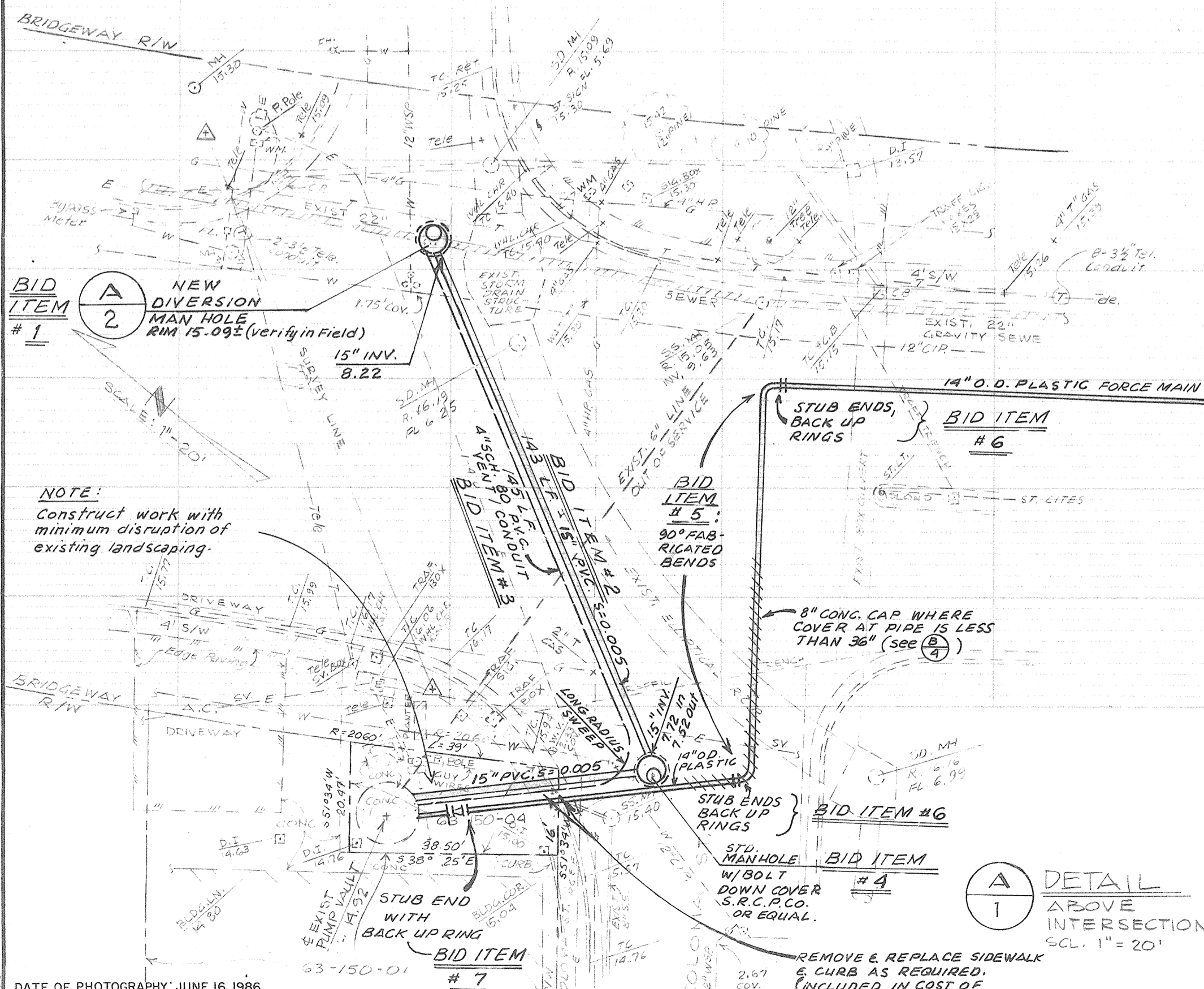


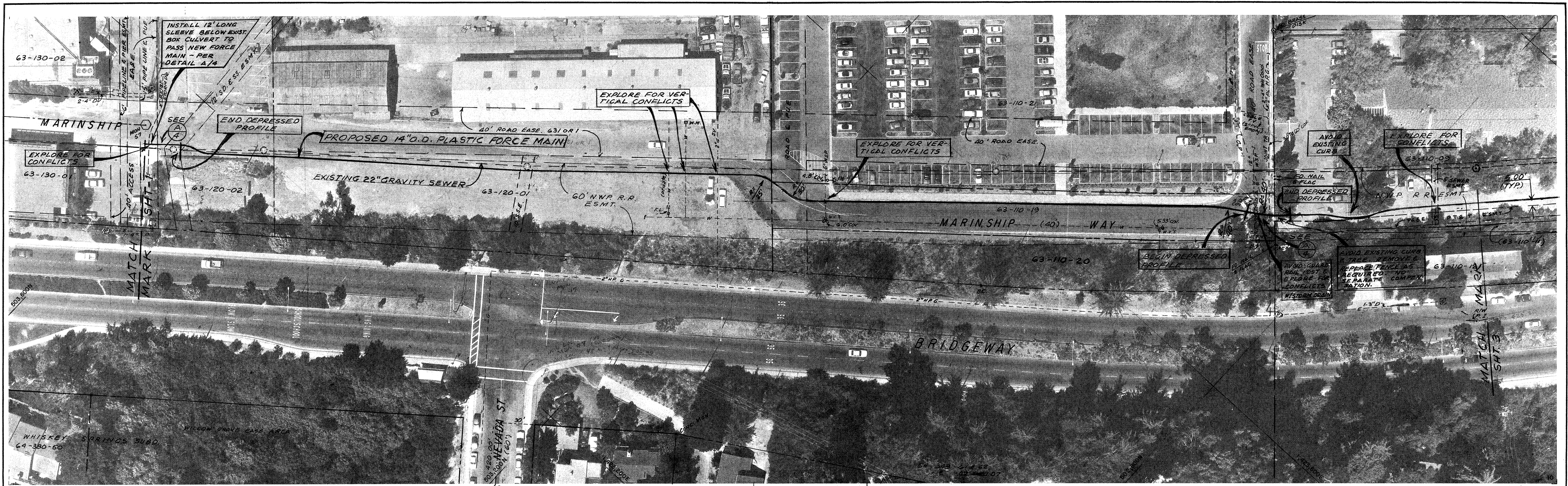
PLAN SCALE: 1" = 40'

- ~ LEGEND ~
- PROPOSED NEW SEWER
 - - - - - EXISTING SEWER
 - - - - - EXIST. PROPERTY LINE
 - - - - - EXIST. EASEMENT LINE

TYPICAL, SHTS. 1 Thru. 5:
TRAFFIC CONTROL & LANE CLOSURES PER
CALTRANS STD. PLANS T-11, T-12 & T-13



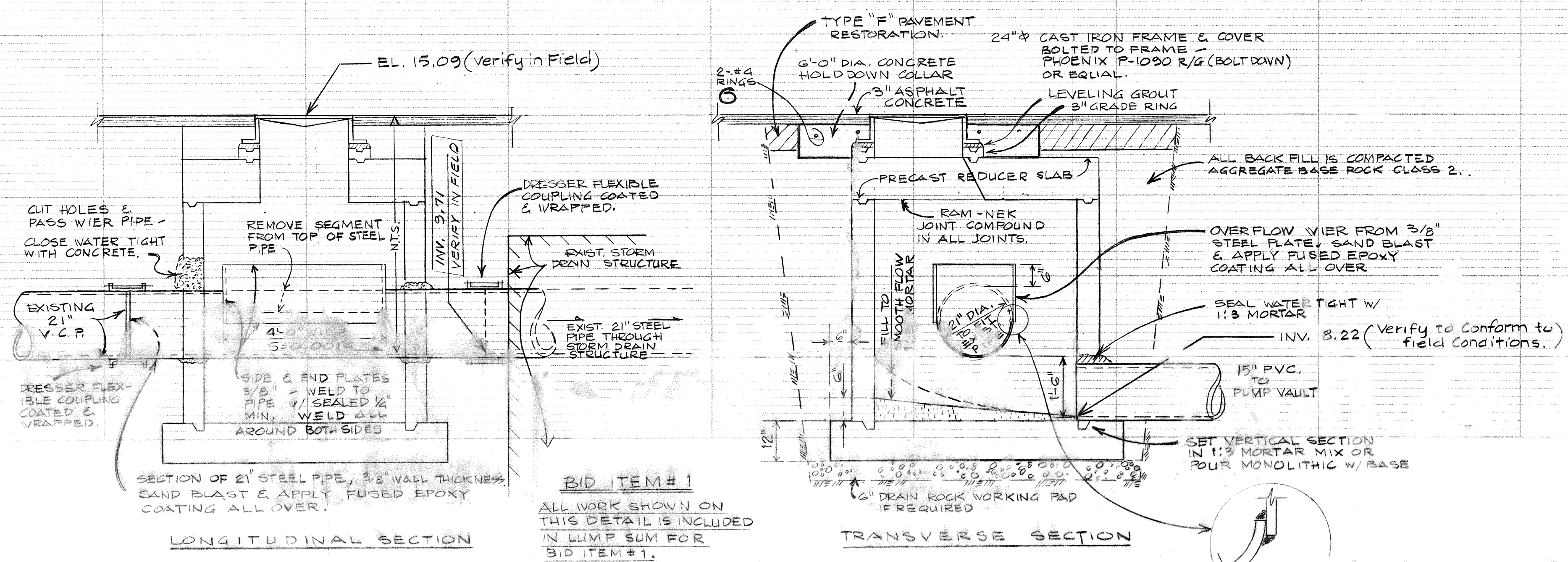
HOFFMAN & ALBRITTON ENGINEERS AND PLANNERS NOVATO CALIFORNIA		RELIEF FORCE MAIN PROJECT COLOMA STREET TO LOCUST STREET Sausalito - Marin City Sanitary District	
		SCALE: As Noted DATE: SEPT. 20, 1987	SHEET NO. 1/5 JOB NO. 2097.26 A DRW. NO.
1 Minor Corrections		1-25-88	BEN C. ALBRITTON, District Engineer



PLAN SCALE: 1" = 40'

- ~ LEGEND ~
- PROPOSED NEW SEWER
 - - - EXISTING SEWER
 - - - EXIST. PROPERTY LINE
 - - - EXIST. EASEMENT LINE

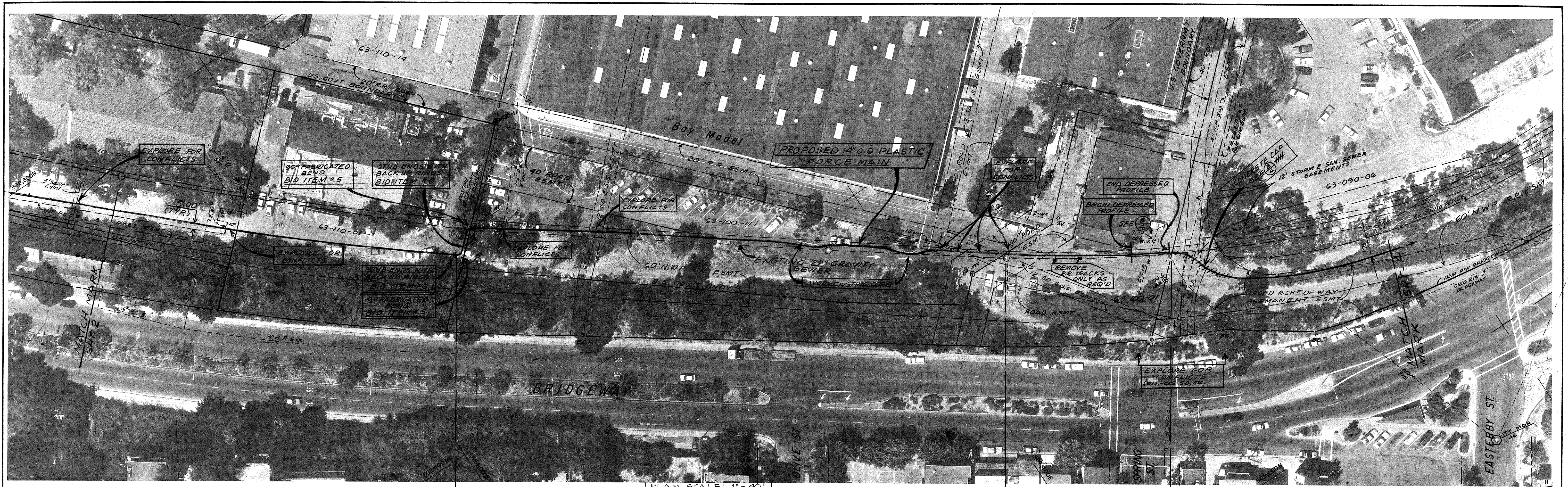
DISTRICT TO ACQUIRE NEW 10 FOOT WIDE EASEMENTS WITHIN EXISTING TRAVELED WAY ~ PARCELS 63-110-09 & 63-110-01



DETAILS OF NEW DIVERSION MANHOLE SCALE: 1/2" = 1'-0"
 (PRECAST 60" I.D. MANHOLE PER SANTA ROSA CAST PRODUCTS CO.)

REGISTERED CIVIL ENGINEER
 BEN C. ALBRITTON
 No. 8540
 My certificate expires 12/31/88

1 Minor Corrections		1-25-88
HOFFMAN & ALBRITTON		
ENGINEERS AND PLANNERS		
NOVATO	CALIFORNIA	
RELIEF FORCE MAIN PROJECT		
COLOMA STREET TO LOCUST STREET		
Sausalito - Marin City Sanitary District		
SCALE: AS NOTED	DES. BY: BCA	SHEET NO. 2/5
DATE: SEPT. 28, 1987	CHK. BY: BCA	JOB NO. 2097.26.A
BEN C. ALBRITTON: District Engineer		



DISTRICT TO ACQUIRE NEW 10' WIDE EASEMENTS
WITHIN EXISTING TRAVELED WAY
PARCELS 63-110-09 & 63-110-01

UTILIZE EXISTING EASEMENT 63-100-11
(BAY MODEL C.O.E.)

UTILIZE EXISTING EASEMENT 63-100-01
PARCEL 63-100-01

DISTRICT TO ACQUIRE NEW 10' WIDE EASEMENTS
ALONG LINE OF PROPOSED BIKE PATH
PARCEL 63-090-06 & 63-090-07

PLAN SCALE: 1" = 40'

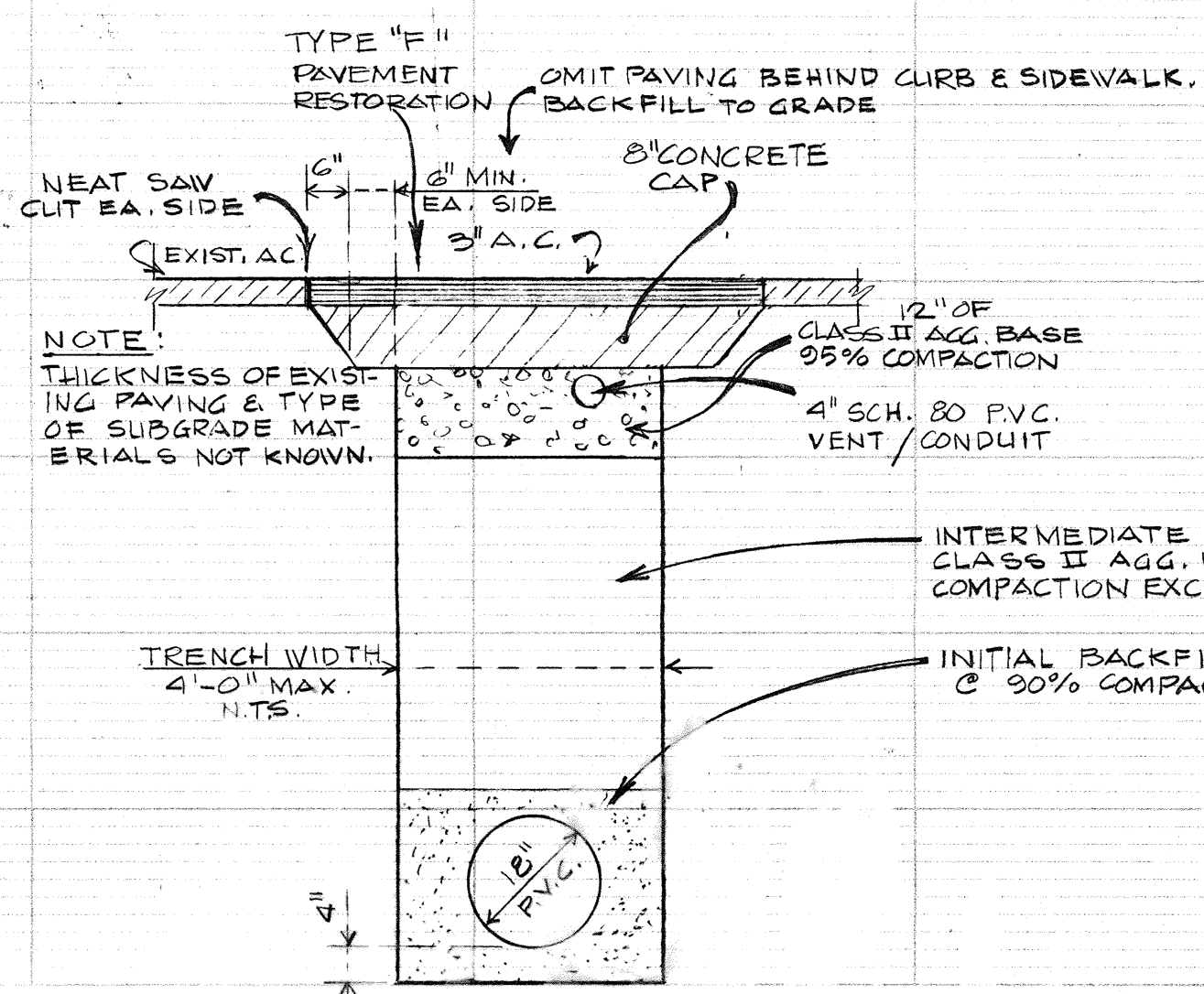
LEGEND

- PROPOSED NEW SEWER
- EXISTING SEWER
- EXIST. PROPERTY LINE
- EXIST. EASEMENT LINE

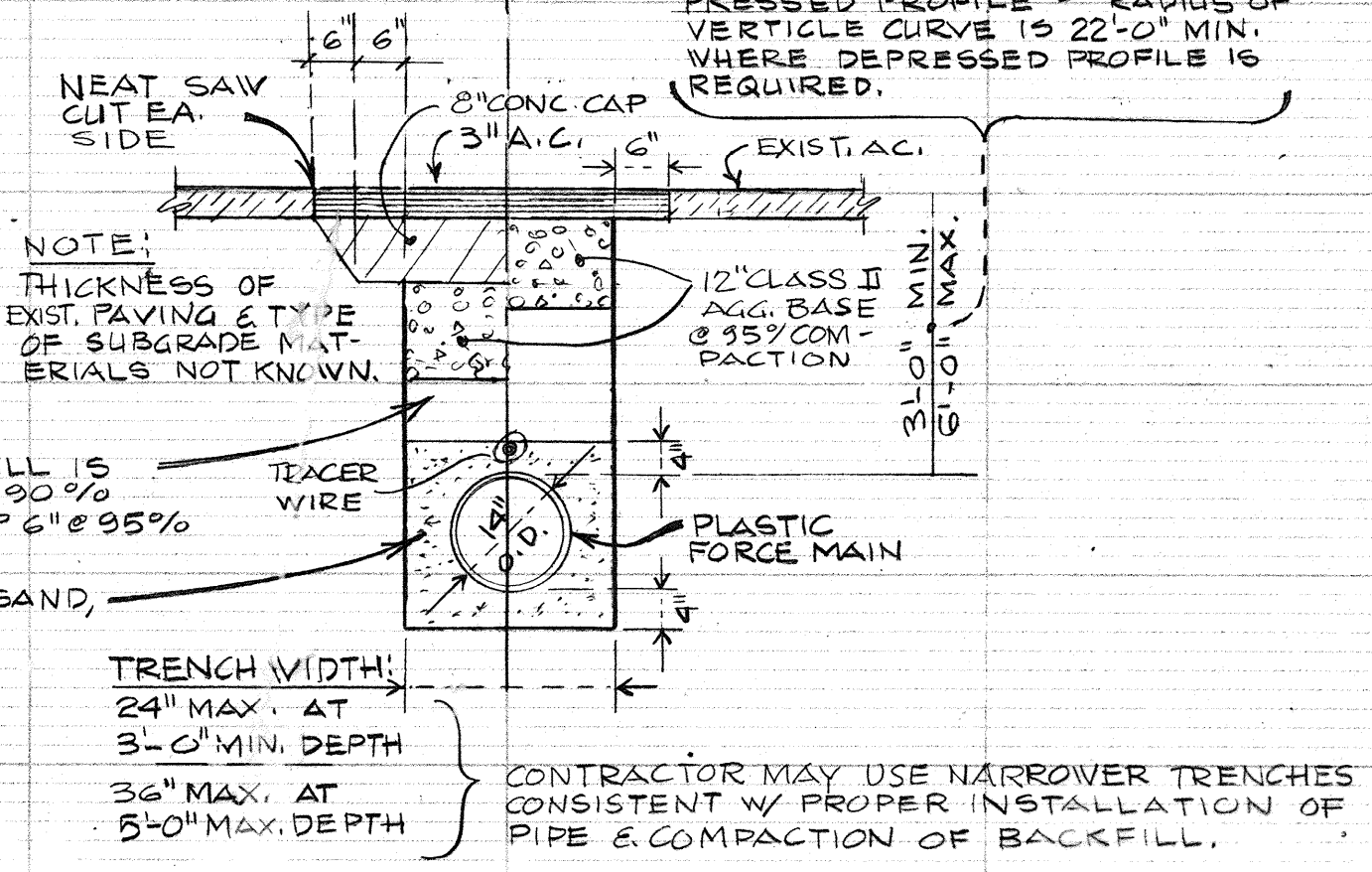
NOTE: TYPE "F" PAVEMENT RESTORATION SHOWN THIS SIDE OF E APPLIES ONLY TO TRENCH IN CITY STREETS & BRIDGEWAY - MARINSHIP WAY.

NOTE: TYPE "D" PAVEMENT RESTORATION SHOWN THIS SIDE OF E APPLIES TO ALL PAVED AREAS OTHER THAN CITY STREETS.

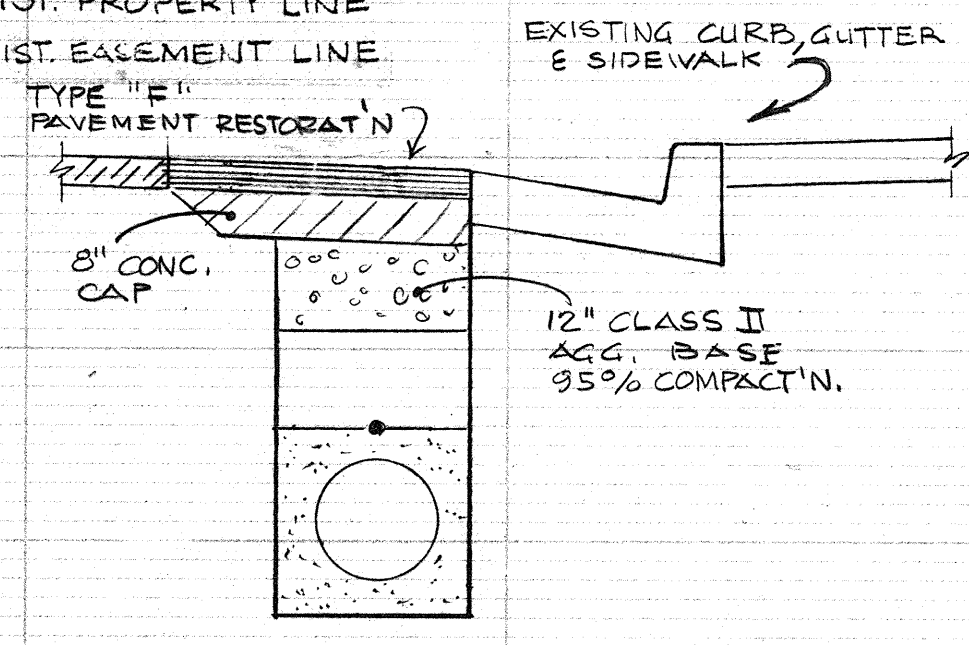
NOTE: INSTALL TYPICALLY @ 2'-0" MIN. DEPTH EXCEPT WHERE UTILITY CONFLICT REQUIRES PROFILE TO BE DEPRESSED FOR CLEARANCE SEE PLAN FOR LOCATIONS OF DEPRESSED PROFILE - RADIUS OF VERTICAL CURVE IS 22'-0" MIN. WHERE DEPRESSED PROFILE IS REQUIRED.



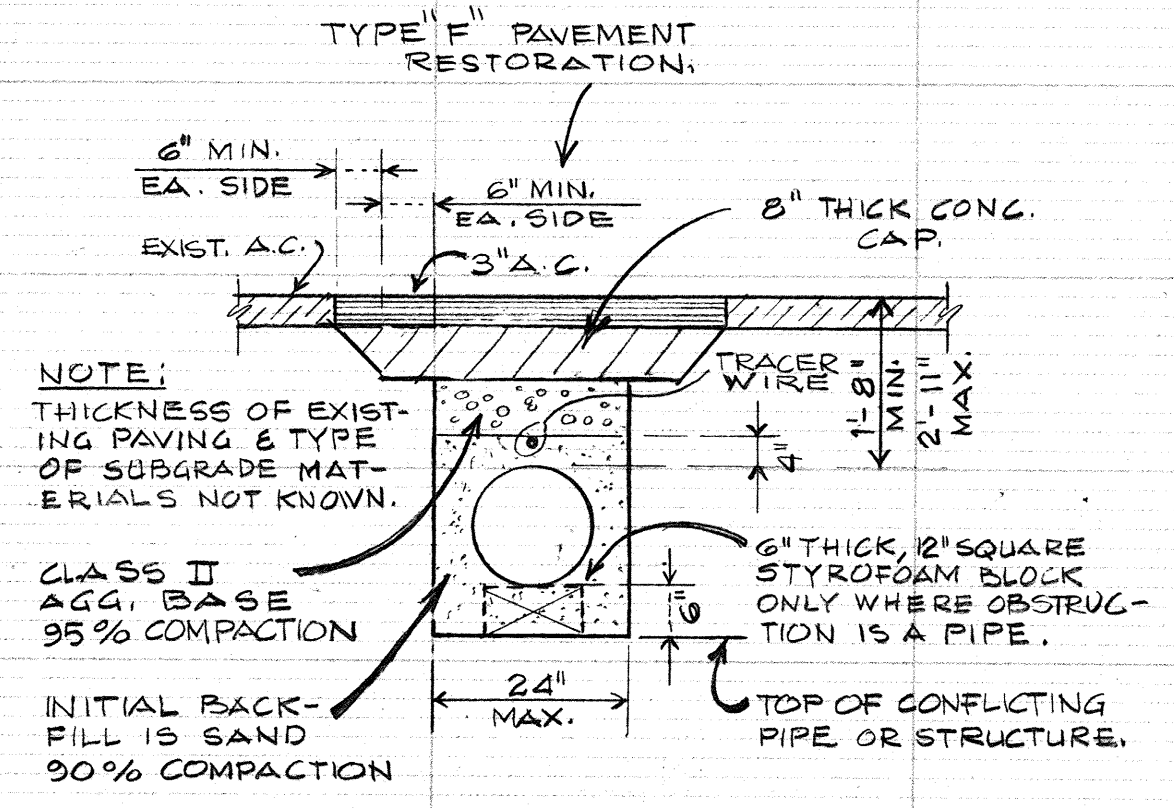
(A) CONDITION BETWEEN NEW DIVERSION MANHOLE & EXISTING PUMP VAULT.



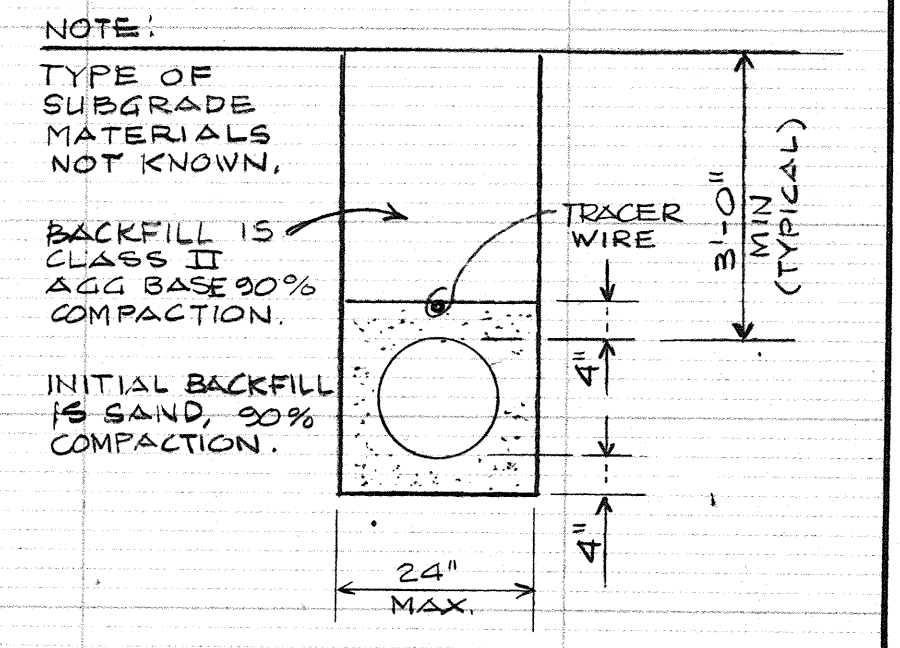
(B) CONDITION TYPICAL IN BRIDGEWAY, HARBOR OR MARINSHIP WAY, PAVED DRIVEWAYS, PARKING LOTS & ALL OTHER PAVED UNNAMED STREETS & TRAFFIC AREAS WHERE NEW PIPE IS NOT ADJACENT TO EXISTING CURB & GUTTER.



(C) CONDITION TYPICAL IN BRIDGEWAY & MARINSHIP WAY WHERE NEW PIPE IS ADJACENT TO EXIST. CURB & GUTTER. DETAILS & NOTES SAME AS AT (B) EXCEPT AS SHOWN

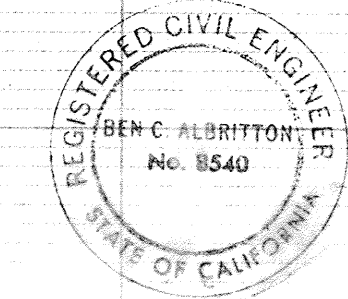


(D) CONDITION TYPICAL FOR USE INSTEAD OF (B) WHERE PROFILE IS RAISED TO PASS ABOVE EXISTING PIPES OR STRUCTURES & 2'-0" MIN. MINIMUM COVER OF PIPE IS NOT POSSIBLE.



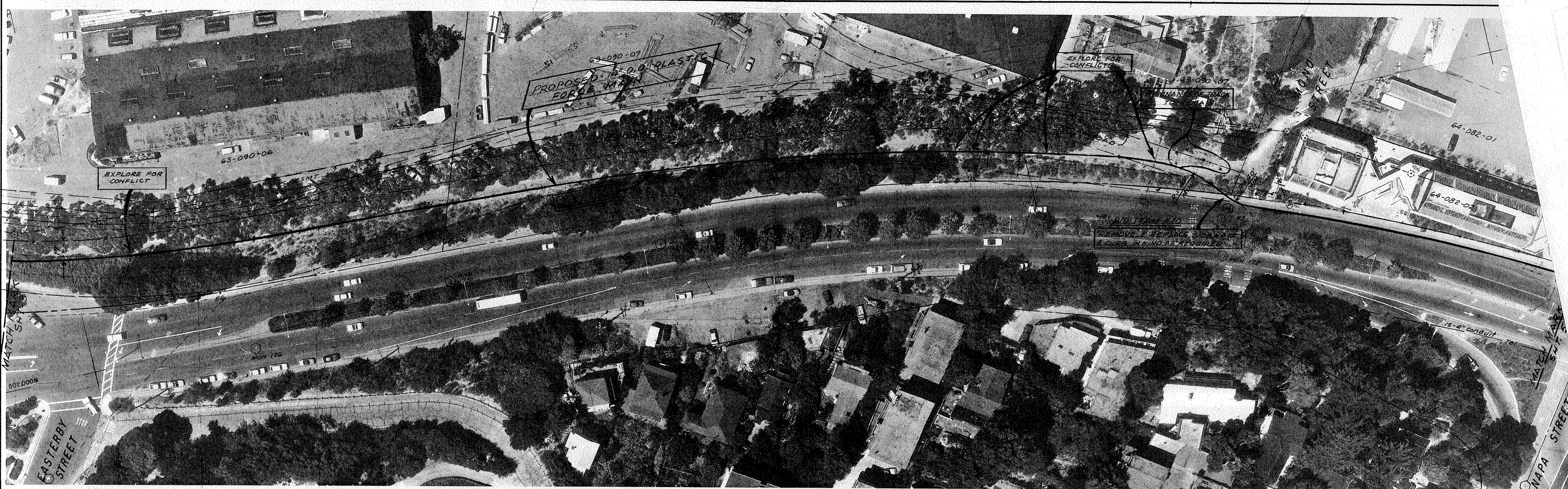
(E) CONDITION TYPICAL FOR ALL UNPAVED AREAS

TYPICAL TRENCH DETAILS
SCALE: 1/2" = 1'-0"



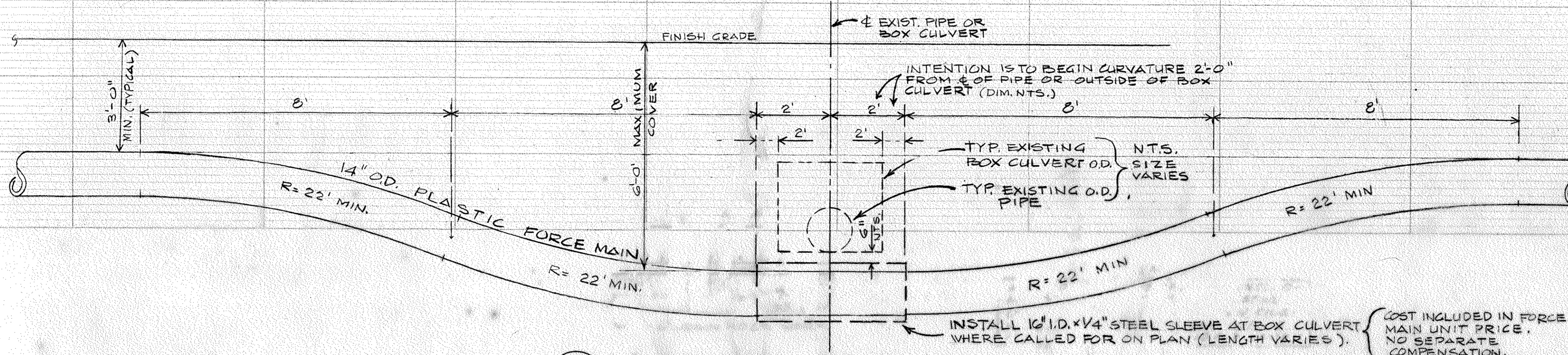
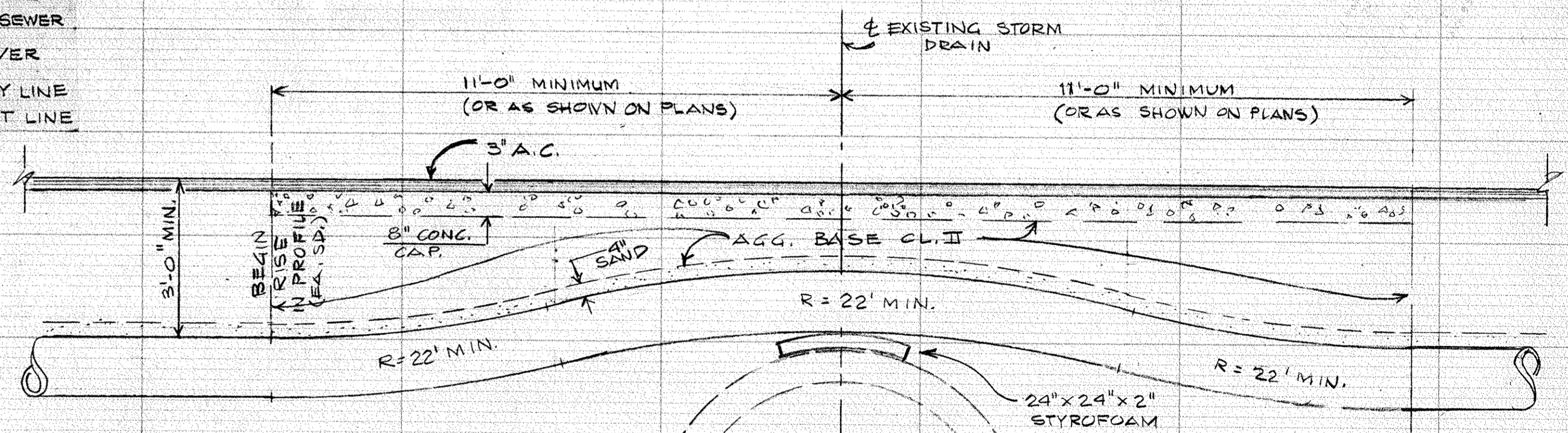
REGISTERED CIVIL ENGINEER
BEN C. ALBRITTON
No. 1540
My Certificate Expires 12/31/88

REVISION		DATE	1-25-88	
1 Minor Corrections				
HOFFMAN & ALBRITTON				
ENGINEERS AND PLANNERS				
NOVATO				CALIFORNIA
RELIEF FORCE MAIN PROJECT COLOMA STREET TO LOCUST STREET Sausalito - Marin City Sanitary District				
SCALE: AS NOTED	DES. BY: BGA	SHEET NO: 3/5	JOB NO. 2097.26 A	
DATE: SEPT. 28, 1987	DRAW. BY: PCB	CHK. BY: BGA	DRW. NO.	
BEN C. ALBRITTON, District Engineer				



DISTRICT TO ACQUIRE NEW 10 FOOT WIDE EASEMENT ALONG LINE OF PROPOSED NEW BIKE PATH ON PARCELS 63-090-06 & 63-090-07

- PLAN SCALE: 1" = 40'
- LEGEND
- PROPOSED NEW SEWER
 - - - - - EXISTING SEWER
 - - - - - EXIST. PROPERTY LINE
 - - - - - EXIST. EASEMENT LINE



REGISTERED CIVIL ENGINEER
 BEN C. ALBRITTON
 No. 8540
 STATE OF CALIFORNIA

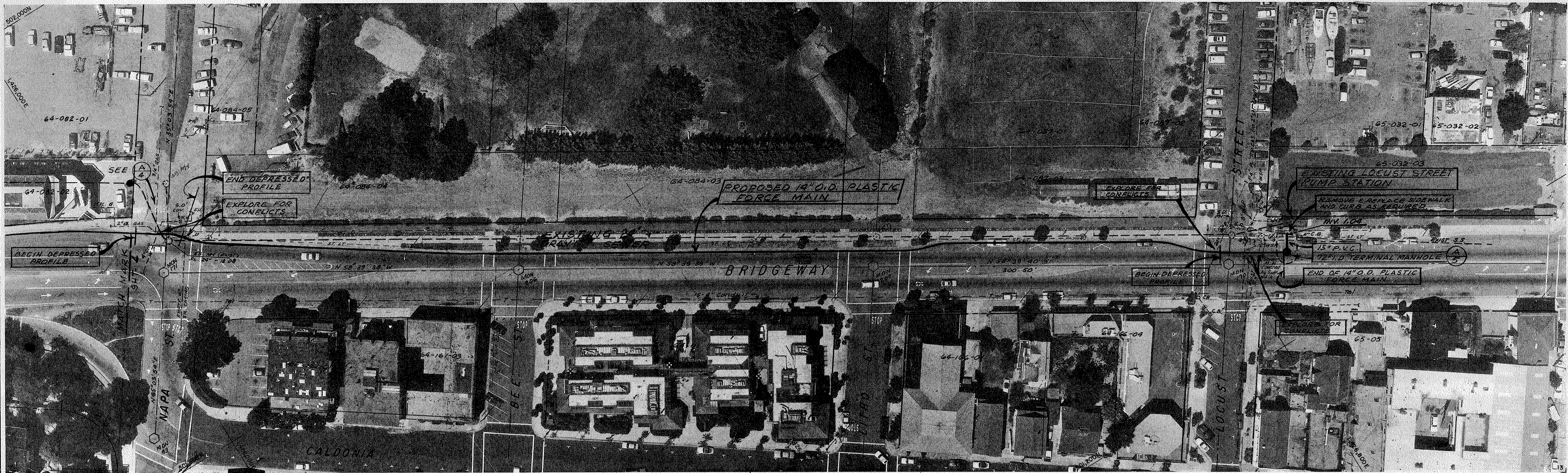
H.A.A.
 My certificate expires 12/31/88

(B) (4) TYPICAL RAISED PROFILE FOR CROSSING AT LARGE STORM DRAINS
 SCALE: 1/2" = 1'-0"
 SEE ALSO TYPICAL TRENCH SECTION (D) (2)

(A) (4) TYPICAL VERTICAL DEPRESSION OF PIPE PROFILE TO PASS BELOW EXISTING PIPE OR STRUCTURE
 SCALE: 1/2" = 1'-0", EXCEPT AS NOTED.

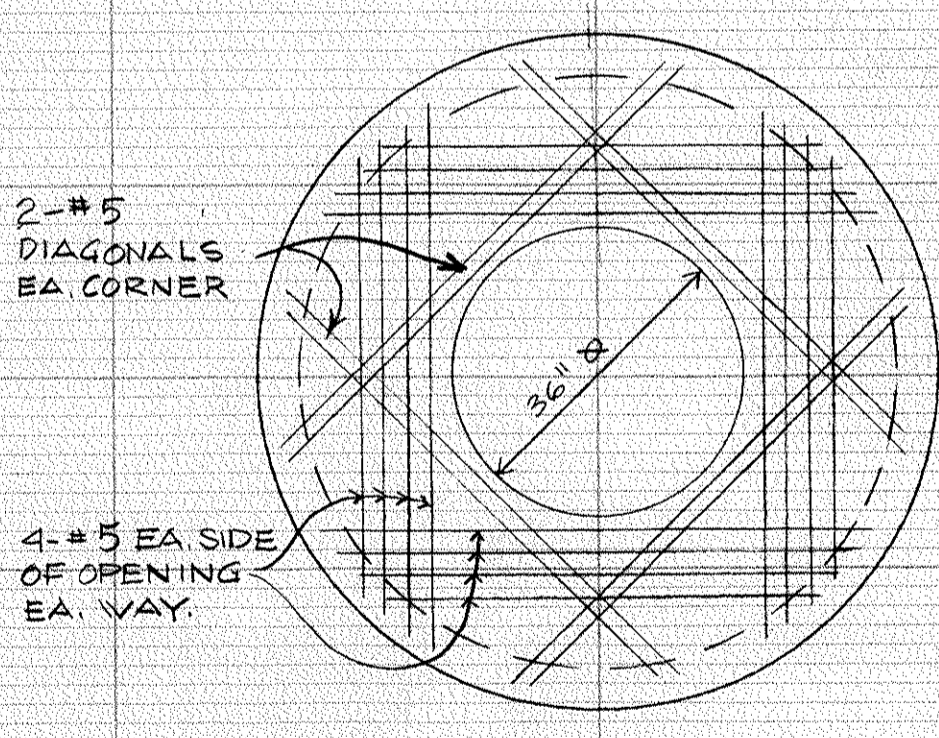
INSTALL 1/2" I.D. x 1/4" STEEL SLEEVE AT BOX CULVERT WHERE CALLED FOR ON PLAN (LENGTH VARIES).
 COST INCLUDED IN FORCE MAIN UNIT PRICE. NO SEPARATE COMPENSATION.
 SEE ALSO TYPICAL TRENCH SECTION (B) (2)

HOFFMAN & ALBRITTON ENGINEERS AND PLANNERS NOVATO CALIFORNIA		RELIEF FORCE MAIN PROJECT COLOMA STREET TO LOCUST STREET Sausalito - Marin City Sanitary District	
1 minor corrections NO. 1 REVISION DATE 1-25-88	SCALE: AS NOTED DATE: SEPT. 28, 1987.	DES. BY BGA DRAW. BY RRB CHS. BY BGA	SHEET NO. 4/5 JOB NO. 2097.26 A DRW. NO. BEN C. ALBRITTON, District Engineer

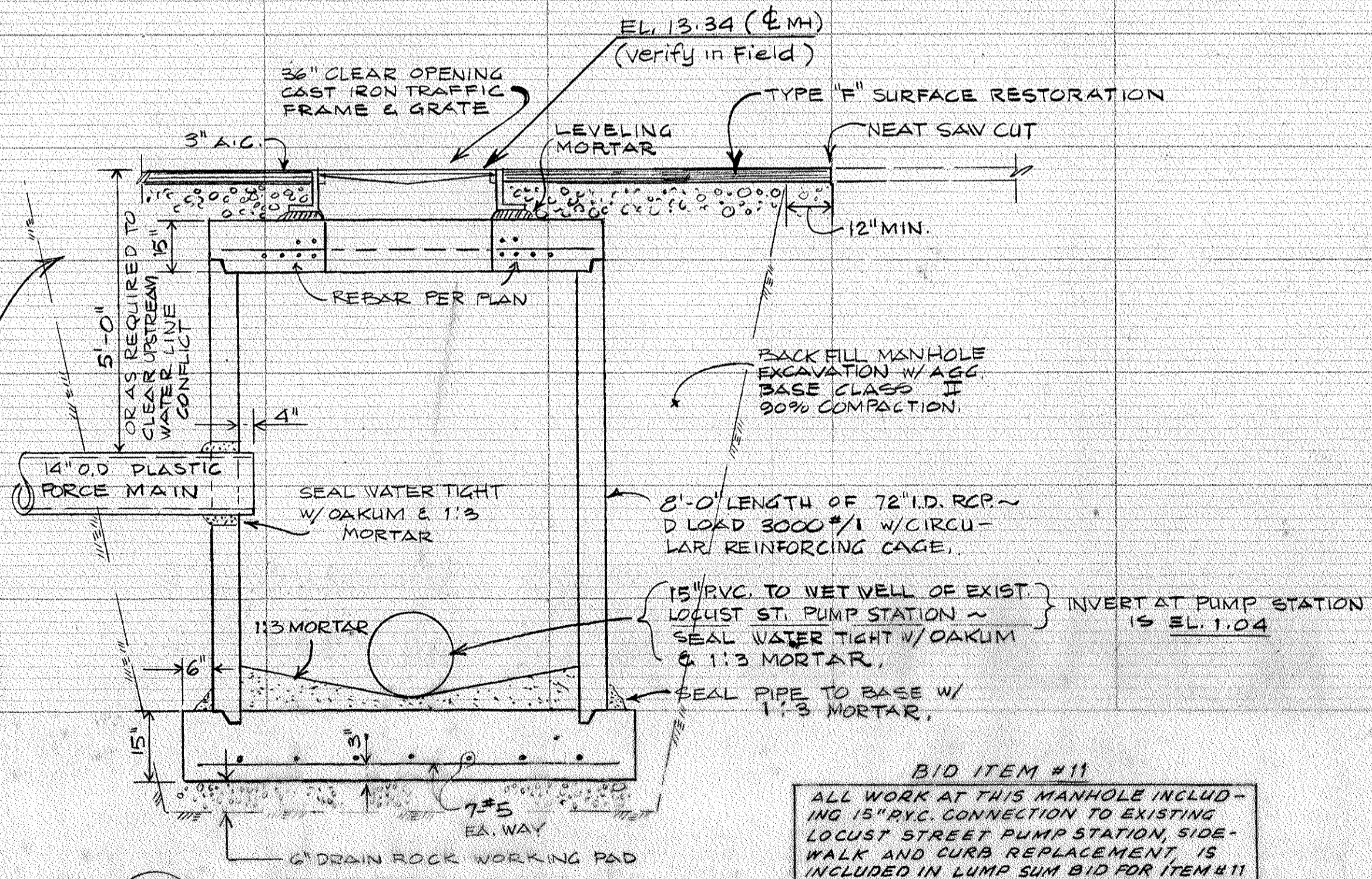


PLAN SCALE: 1" = 40'

- ~ LEGEND ~
- PROPOSED NEW SEWER
 - - - - EXISTING SEWER
 - - - - EXIST. PROPERTY LINE
 - - - - EXIST. EASEMENT LINE

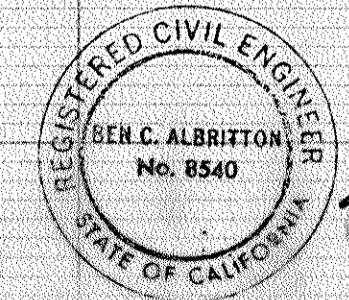


PLAN OF REBAR AT TOP OF MANHOLE



A
5 72" TERMINAL MANHOLE
SCALE: 1/2" = 1'-0"

BID ITEM #11
ALL WORK AT THIS MANHOLE INCLUDING 15" PVC CONNECTION TO EXISTING LOCUST STREET PUMP STATION, SIDEWALK AND CURB REPLACEMENT IS INCLUDED IN LUMP SUM BID FOR ITEM #11



B.C.A.
12/31/88

HOFFMAN & ALBRITTON ENGINEERS AND PLANNERS NOVATO CALIFORNIA		RELIEF FORCE MAIN PROJECT COLOMA STREET TO LOCUST STREET Sausalito - Marin City Sanitary District	
		SCALE: AS NOTED DATE: SEPT. 28, 1987	DES. BY: BCA DRAW. BY: RRB CHK. BY: BCA