

Sausalito-Marín City Sanitary District

Coloma Pump Station Replacement Project

Mandatory Pre-Bid Presentation and Site Walk



A full set of Contract Documents and related Supplemental Project Information is available at various Bay Area Builders Exchanges and on the District's website at <http://smcsd.net> under Documents/Capital Improvement Projects. For additional information you may contact the District at 415-332-0244.

It is mandatory that all Bidders review and understand all content presented in this pre-bid presentation prior to submitting a Bid for the Project. Bidders must acknowledge meeting this mandatory requirement where indicated on the Bid Form in Section 00400.

All Bidders must conduct a self-guided Project walk-through of all worksite locations. Bidders must include a signed statement of compliance for this requirement with their Bid submission or their Bid will be deemed non-responsive. A verification sheet is included at the end of Section 00100.

Addenda may be posted to the District's website through October 20, 2020.

See Addendum #1 (Rev. 1) which has been posted.

It is the Contractor's responsibility to ensure all addenda are received and acknowledged on the bid form.

Bids can be submitted until **2:00 p.m., on October 27, 2020.** No late bids will be accepted or opened.

Bid Documents and Instructions

- Instructions to Bidders – Document 00200
- Bid Form – Document 00400

Construction Sequencing, Constraints, Temporary Power and Bypass Pumping

- Section 01140 – Work Restrictions
- Section 01500 – Construction Facilities & Temporary Controls
- Section 01560 – Environmental Controls
- Section 02552 – Temporary Bypass Pumping

Addendum #1, Rev. 1 has been issued for the project. There may be additional addenda issued through October 20, 2020. It is the Contractor's responsibility to check the District's website for all addenda and to acknowledge all addenda in their bid.

1. Bid Date revised to 2:00 PM Tuesday, Oct 27, 2020.
2. Bidder qualification criteria has been revised to be less restrictive.
3. BAAQMD Permits require Contractor to submit associated forms.
4. Temporary Power for the project is being secured by the District.
5. Staging adjacent to the project site is available through the City.
6. Minor change to polyurethane application.
7. Pressure gauge schedule has been included.

100' of staging is available across Coloma street. There will be very limited staging on the project site due to tree protection, property lines and required excavation. Additional staging is the Contractor's responsibility to obtain as needed.

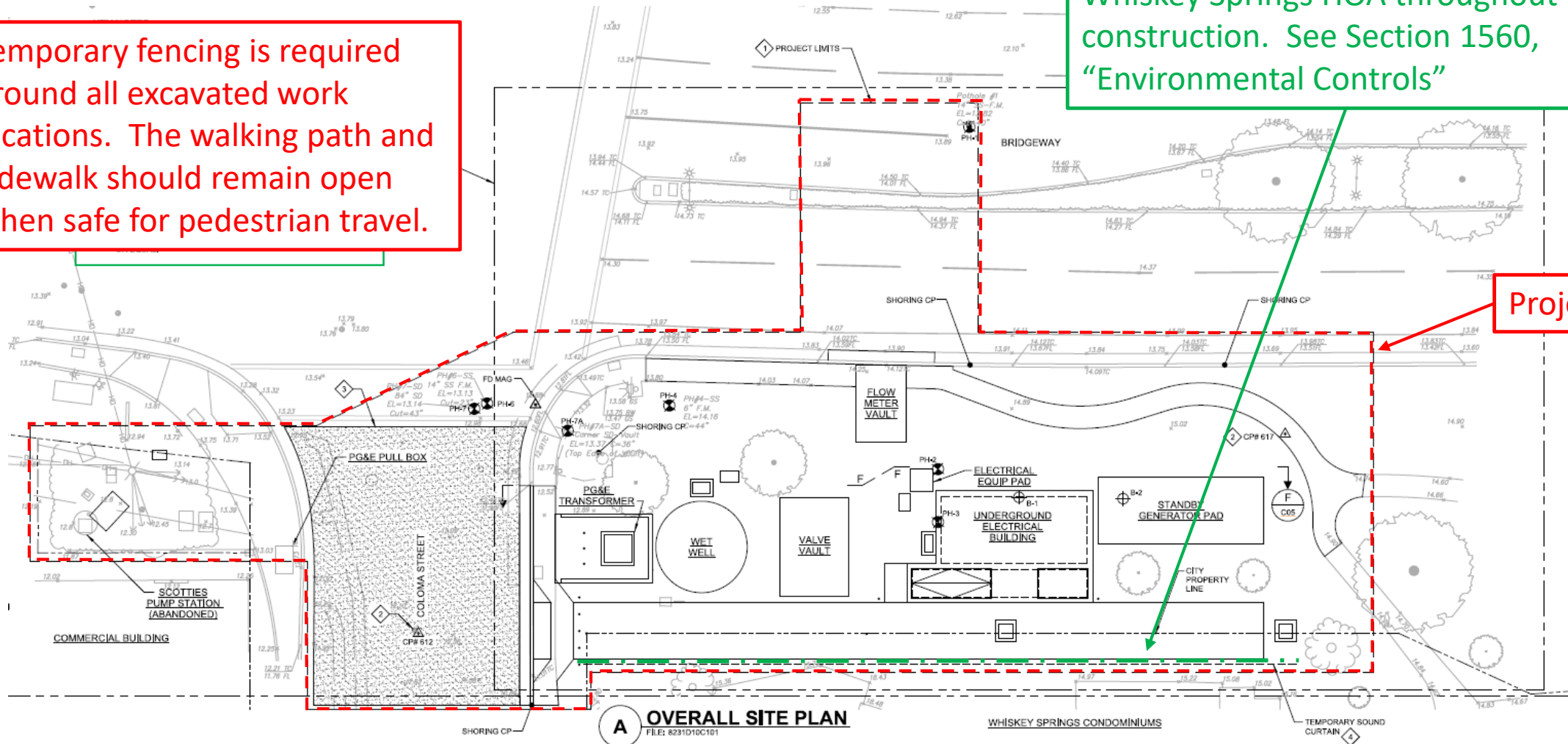


Overall Site Plan – Drawing C01

Temporary fencing is required around all excavated work locations. The walking path and sidewalk should remain open when safe for pedestrian travel.

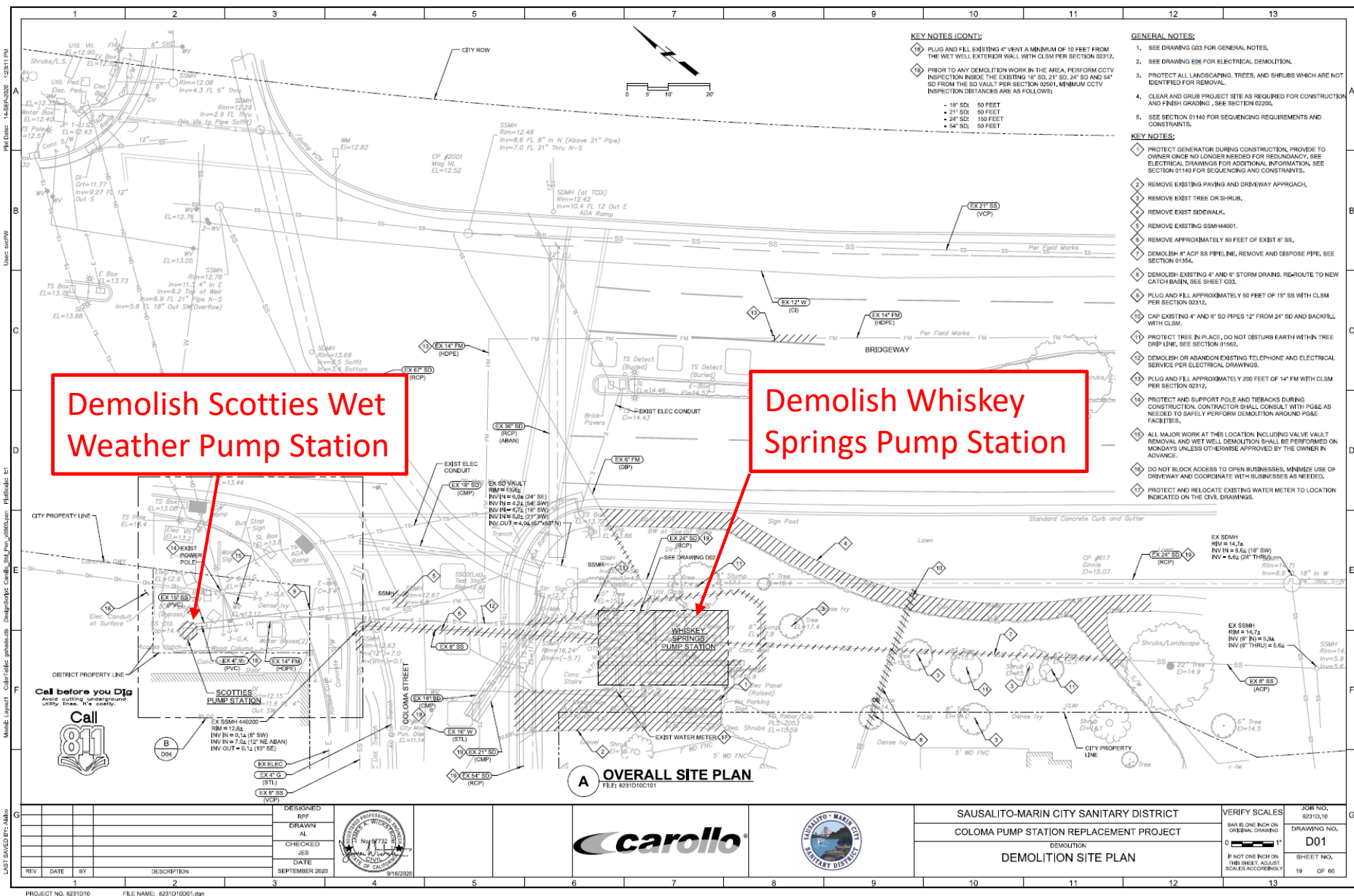
A 15' tall sound curtain shall be installed between the worksite and Whiskey Springs HOA throughout construction. See Section 1560, "Environmental Controls"

Project Limits

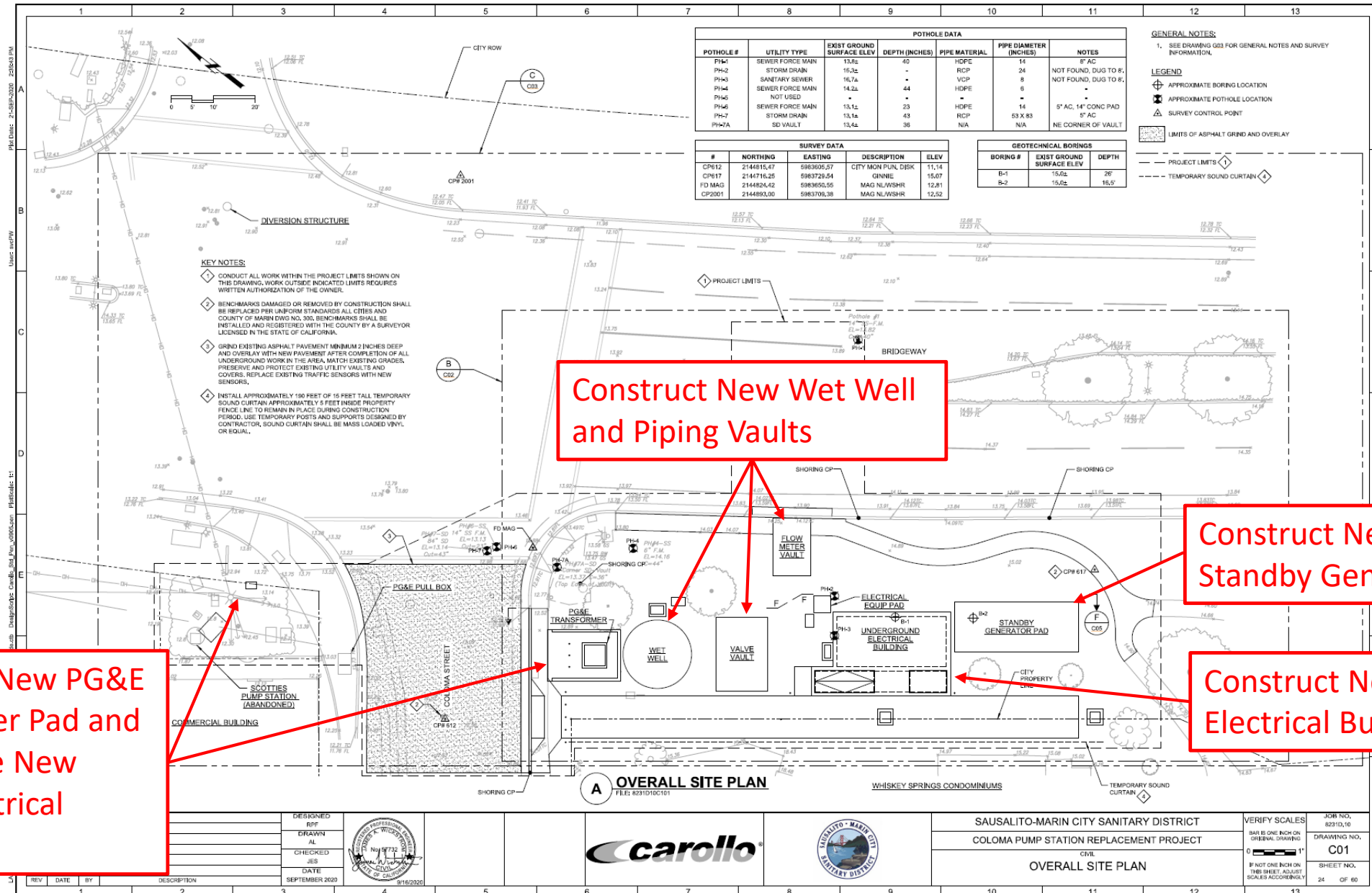


Whiskey Springs Condominiums

Demolition Site Plan – Drawing D01



Overall Site Plan – Drawing C01



Construct New PG&E Transformer Pad and Coordinate New PG&E Electrical Service

Construct New Wet Well and Piping Vaults

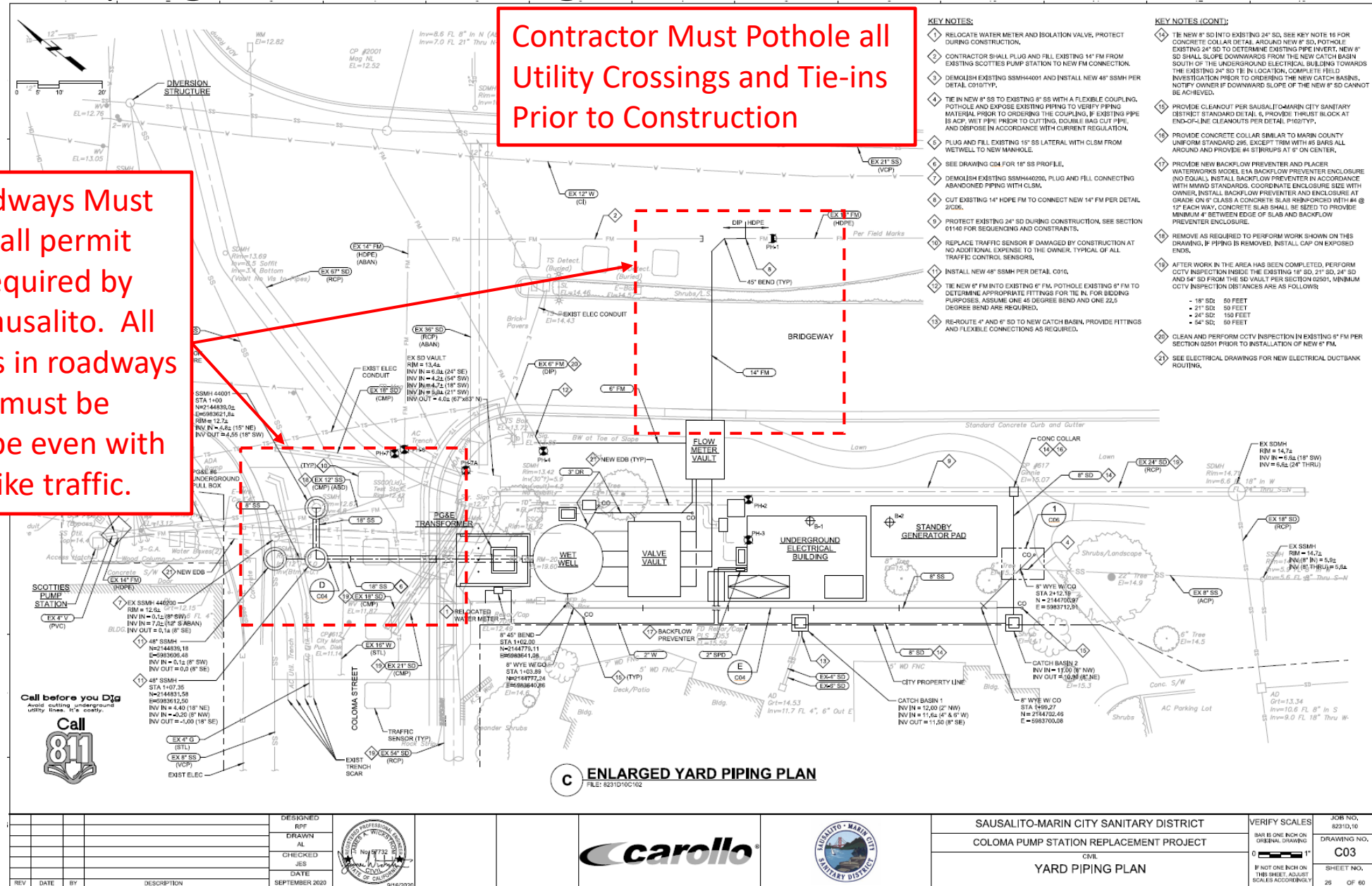
Construct New Emergency Standby Generator

Construct New Underground Electrical Building

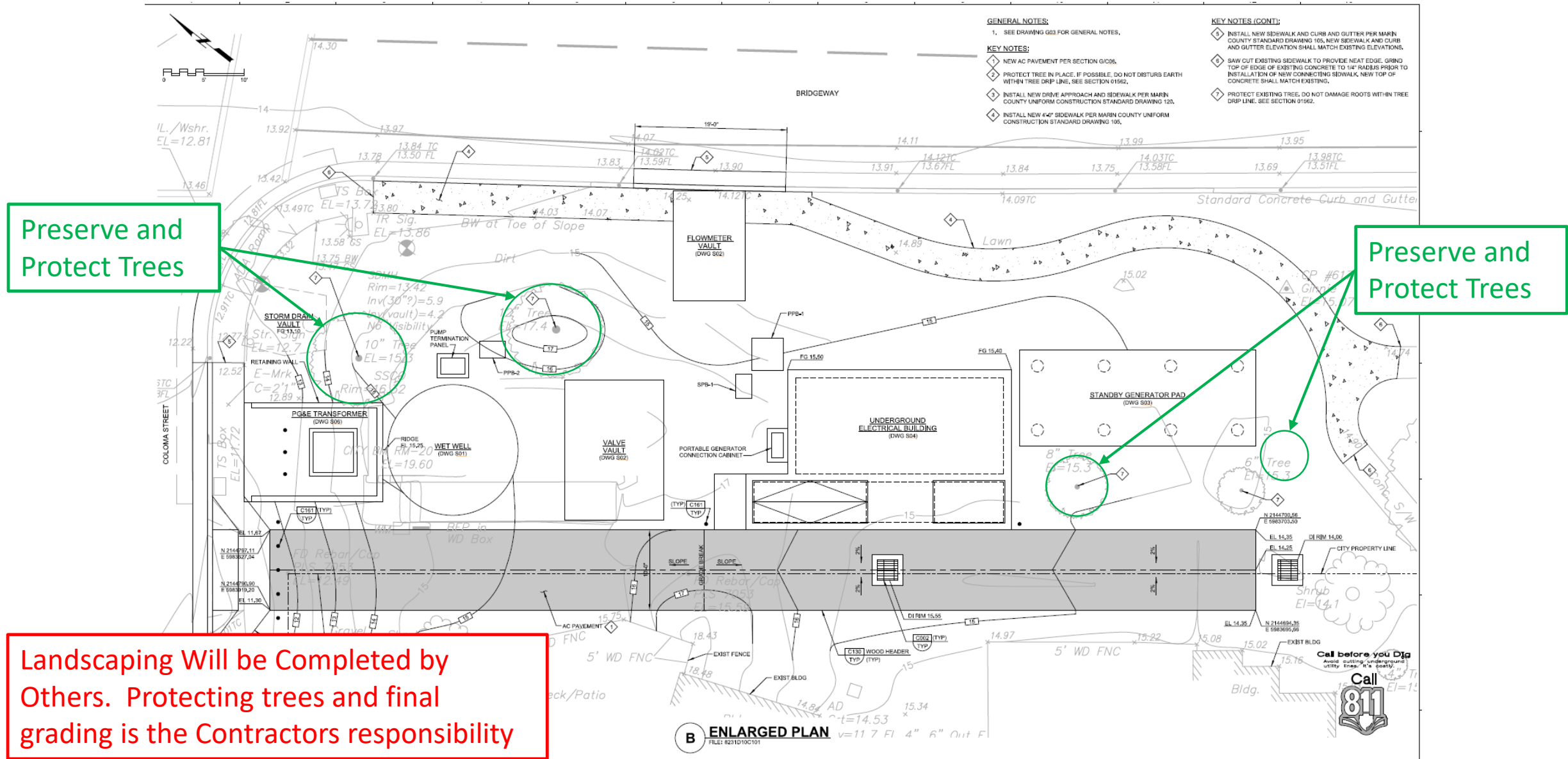
Yard Piping Plan – Drawing C03

Work in Roadways Must comply with all permit conditions required by the City of Sausalito. All trench-plates in roadways or pathways must be recessed to be even with asphalt for bike traffic.

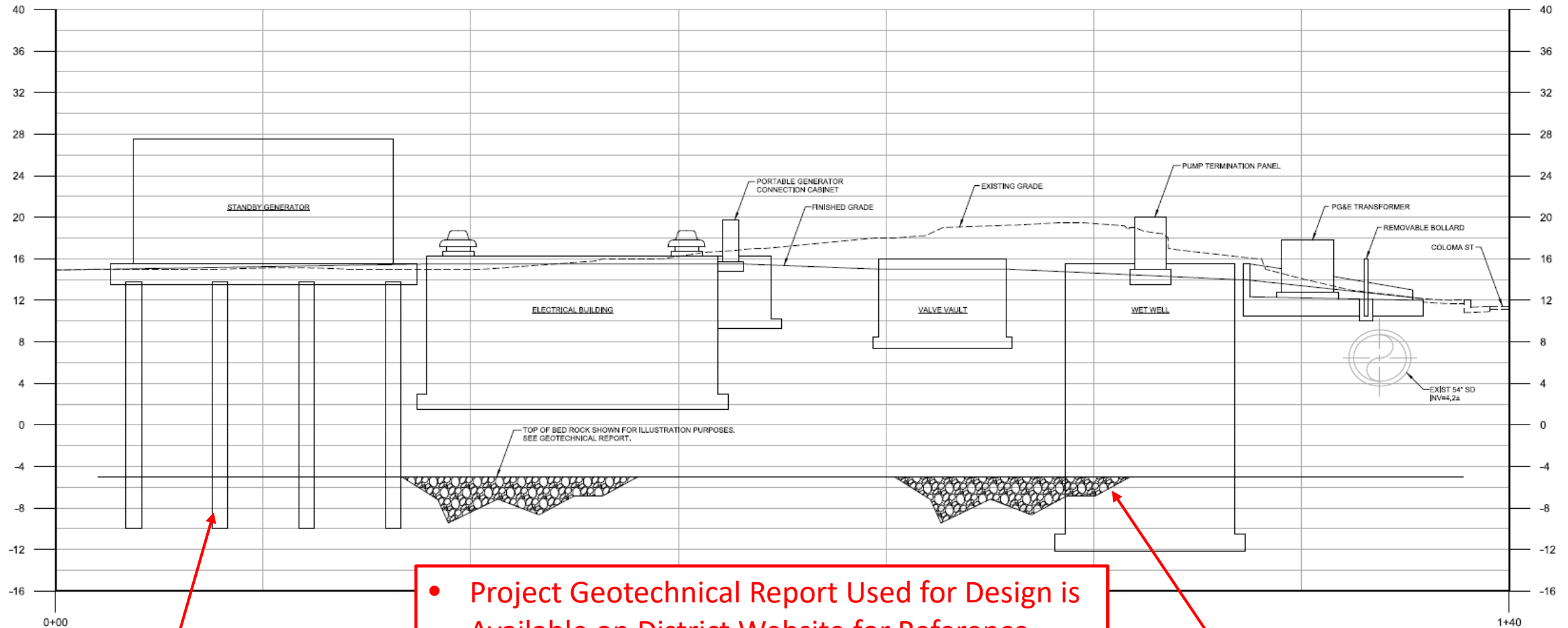
Contractor Must Pothole all Utility Crossings and Tie-ins Prior to Construction



Paving and Grading Plan – Drawing C02



Site Section – Drawing C05



Drilled Piers Below
Standby Generator

- Project Geotechnical Report Used for Design is Available on District Website for Reference.
- Contractor shall Prepare a Separate Geotechnical Report for Temporary Excavation and Shoring Design per Section 02260.

Bedrock Encountered
During Geotechnical
Field Investigations

Coloma Pump Station Replacement Project

Tree Protection and Local Residence

All trees within the project site that are not marked for removal shall be protected throughout construction. The existing Blue Atlas Cedar Trees are protected by the City of Sausalito and local agencies including Sausalito Beautiful and the Whiskey Springs HOA:

- Trunks shall be protected with fabric and boards.
- Do not disturb any roots in the trees dripline unless approved by Owner.
- Roots larger than 2" must be evaluated prior to cutting. If cut, roots need to be cut clean (not torn) and wrapped to protect from insects and fungus.
- Contractor will be required to follow guidelines included in Section 01560 by Bartlett Tree Experts titled, "Preventing Construction Damage to Trees."

The City of Sausalito and the Whiskey Springs HOA
require protection of the 4 Atlas Cedar Trees shown below.

The two on the left will be near the generator pad which has piers but no deep excavation.
The two on the right will be near the wet well and will require special care during excavation.



Coloma Pump Station Replacement Project

Project Requirements

- Prior to mobilizing the Contractor must obtain an Encroachment Permit from the City of Sausalito, see section 01060 "Regulatory Requirements and Permits". Contractor shall obtain approval of a SWPPP, Traffic Control Plan and Staging Request in order to obtain an Encroachment Permit.
- Access to the site will primarily be from Coloma Street due to high traffic conditions on Bridgeway Blvd.
- All trench-plates in roadways must be recessed even with asphalt due to heavy bike traffic.
- Groundwater discharge limits apply. No contaminated water or silt may be introduced into the sewer system. Contractor must monitor water quality during dewatering operations.
- Temporary power and electric bypass pumps will be required for the duration of construction to maintain compliance with the City's noise ordinance during evening hours.
- Pumps will require a backup generator to protect against utility power outages.
- Contractor will be required to CCTV all existing and new lines per Section 02501.

Coloma Pump Station Replacement Project



The construction cost estimate for all work is: **\$5 Million Dollars**
All work is to be completed within **400 (Four Hundred)** calendar Days

The District's Main Office is located at 1 East Road, Sausalito, California 94965

Bids can be submitted until **2:00 p.m., on October 27, 2020.**
(No late bids will be accepted or opened.)

For additional information you may contact the District at 415-332-0244

Thank you,
Kevin Rahman, District Engineer