

NOTE: ALL MATERIAL TO BE 1/4" THICK ST. L. PL. GALVANIZED AFTER FABRICATION AND PAINT FLAT BLACK SEAL WELD ALL WELDS

NOTE: RELOCATE EXISTING PLANTER BOXES AND UTILITIES IN WAY OF NEW CABINET AS DIRECTED.

NOTE: DETERMINE EXISTING CONC. LOCATION AS DIRECTED BY THE ENGINEER FOR PIPING. PIPES ARE SHOWN SEPARATED FOR CLARITY. MAY BE GROUPED IN FIELD TO SIMPLIFY INSTALLATION.

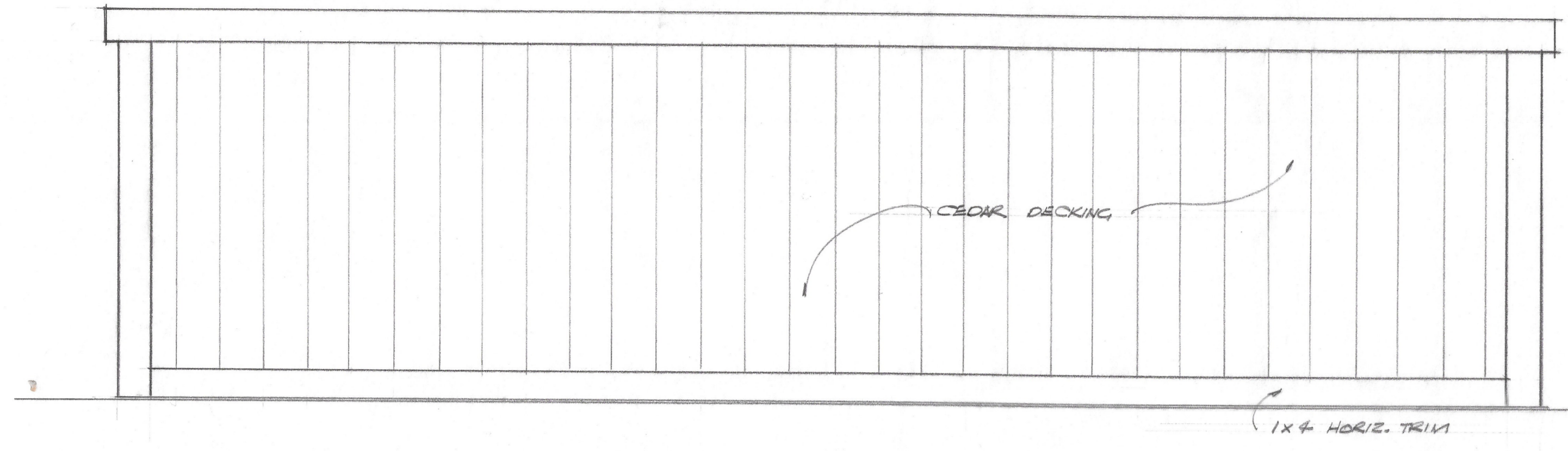
NOTE: S.S. INDICATES STAINLESS STEEL. ALL METAL NOTED AS GALVANIZED SHALL BE HOT DIPPED GALVANIZED.



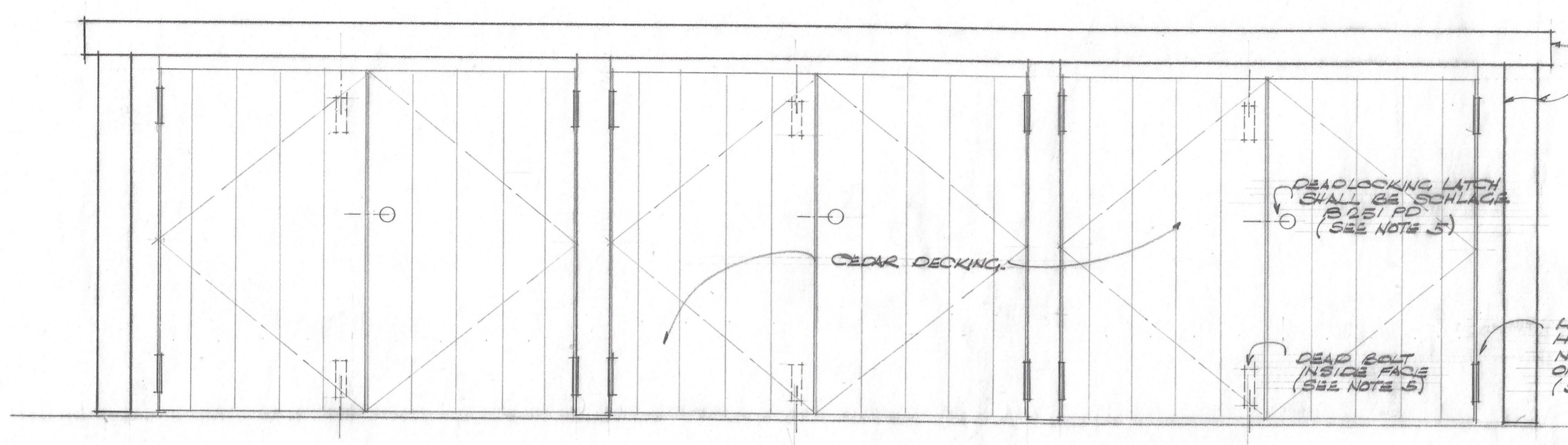
REVISION		DATE

DISTRICT ENGINEER - SAUSALITO MARIN CITY SANITARY DISTRICT
WHITLOW, HOFFMAN & ALBRITTON
 CIVIL & STRUCTURAL ENGINEERS
 SAN RAFAEL, CALIFORNIA

SCALE: AS NOTED	DES. BY: BCHA	SHEET NO. 1 OF 2	JOB NO. 2097.14
DATE: JAN 1969	DRAWN BY: LMG		



BACK ELEVATION



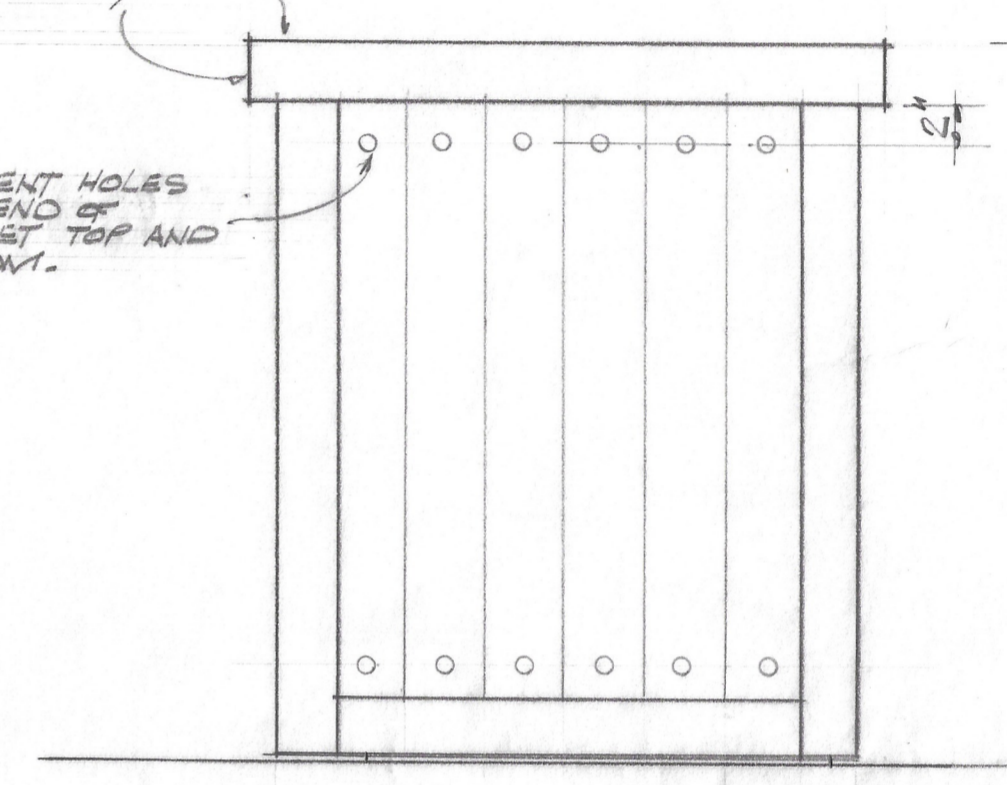
FRONT ELEVATION

NOTE: ROUND ALL CORNERS WITH 1/4" RADIUS. TYPICAL

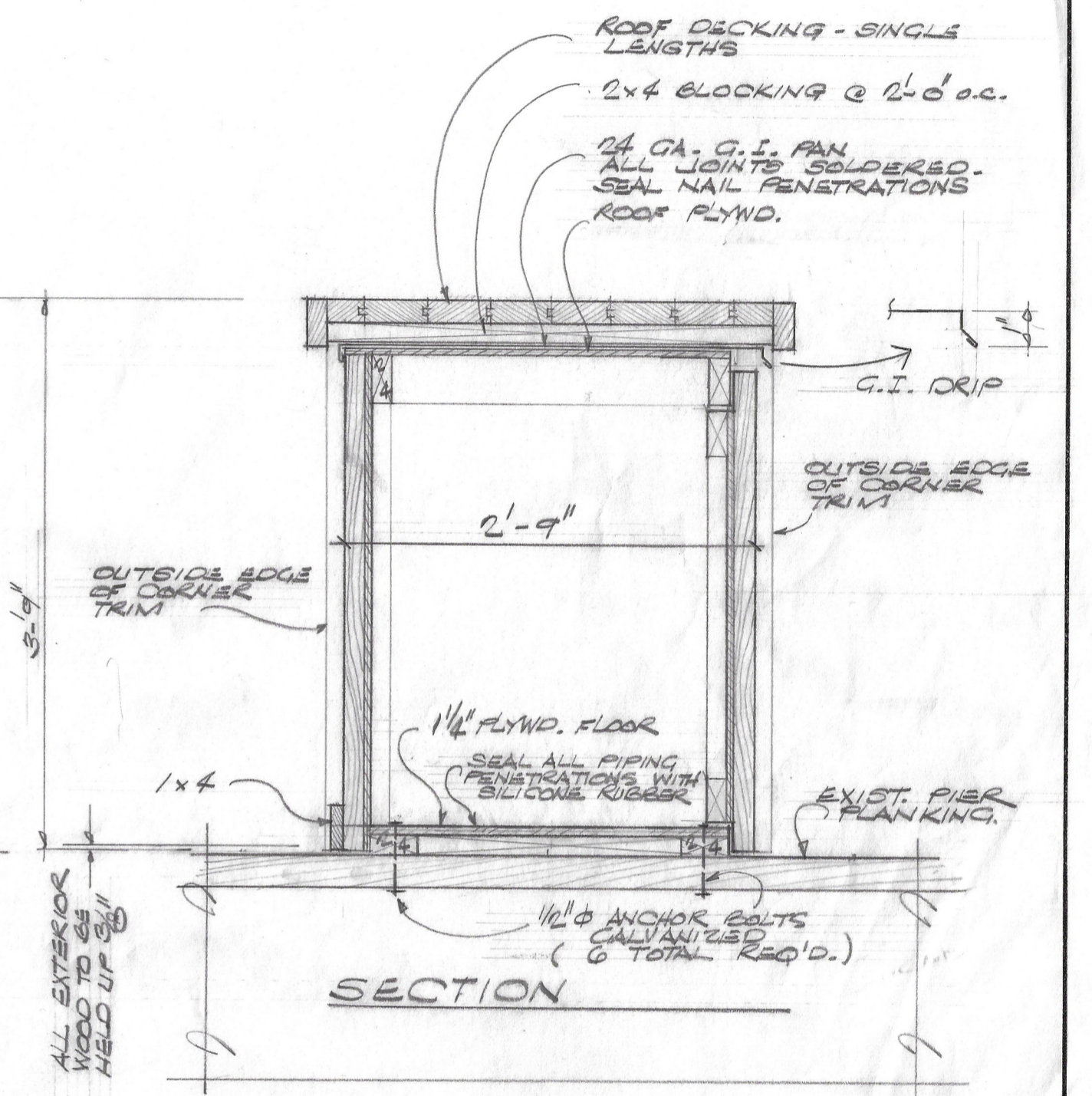
1/4" VENT HOLES EACH END OF CABINET TOP AND BOTTOM.

HINGES SHALL BE HAGER TOO 4x4 NON REMOVABLE PIN OR APPROVED EQUAL (SEE NOTE 5)

DEAD BOLT INSIDE FACE (SEE NOTE 5)



END ELEVATION



ROOF DECKING - SINGLE LENGTHS
2x4 BLOCKING @ 12'-0" o.c.
24 GA. G.I. PAN
ALL JOINTS SOLDERED - SEAL NAIL PENETRATIONS
ROOF FLYND.

G.I. DRIP

OUTSIDE EDGE OF CORNER TRIM

2'-9"

OUTSIDE EDGE OF CORNER TRIM

1/4" FLYND. FLOOR

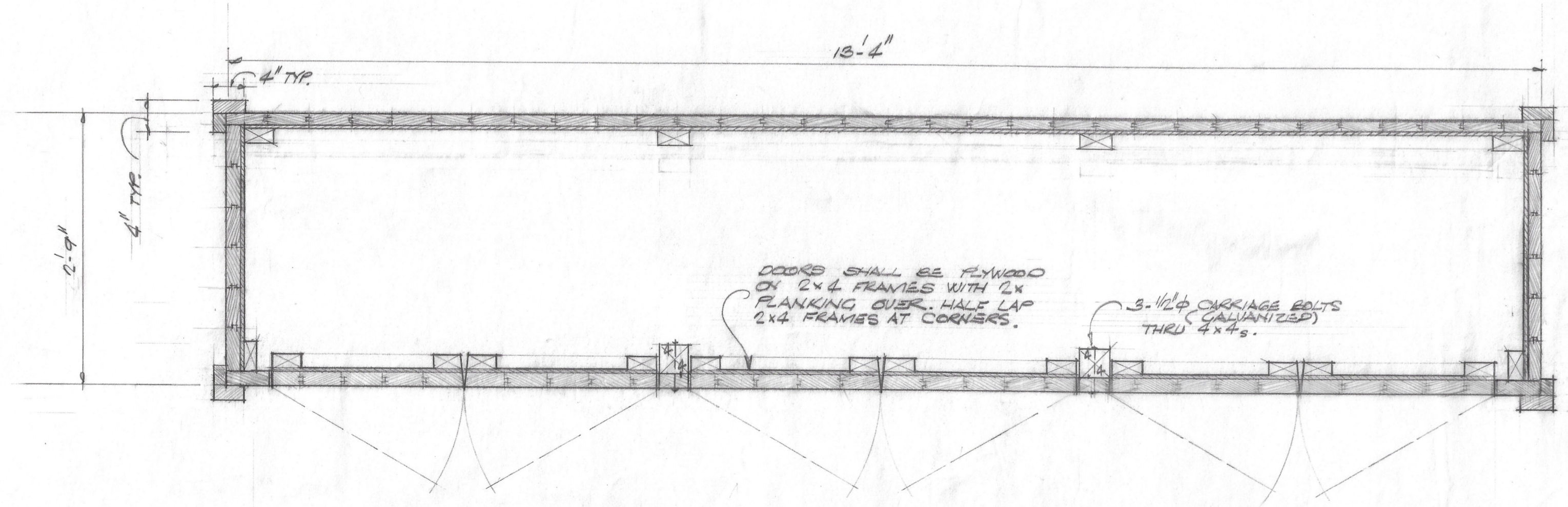
SEAL ALL PIPING PENETRATIONS WITH SILICONE GUMBER

EXIST. PIER PLANKING

1/2" ANCHOR BOLTS CALVANIZED (6 TOTAL REQ'D.)

SECTION

ALL EXTERIOR WOOD TO BE PAINTED UP



PLAN SECTION

NOTES:

1. EXTERIOR PLANKING AND ALL EXPOSED TRIM PIECES SHALL BE CLEAR PINE OR FORD CEDAR, SEAL END CUTS. PLANKING SHALL BE 2x6 T. & G., ROUNDED CORNERS.
2. UNEXPOSED FRAMING MEMBERS SHALL BE DOUGLAS FIR. PAINT WITH AN APPROVED PRESERVATIVE AFTER FRAMING.
3. FLYND. SHALL BE WATERPROOF EXTERIOR GRADE (A-C) SIDES AND ROOF SHALL BE 1/2" THICK. FLOOR SHALL BE 1/4" THICK.
4. ALL NAILS SHALL BE CALVANIZED. EXPOSED NAILS SHALL BE DRIVEN IN A NEAT PATTERN AS DIRECTED.
5. ALL HARDWARE SHALL BE SOLID BRONZE, OR STAINLESS STEEL.
6. TREAT ALL SURFACES OF EXIST. DECK UNDER NEW CABINET WITH AN APPROVED PRESERVATIVE. BED SUPPORTS OF NEW CABINET IN CONTACT WITH EXIST. DECK SHALDY IN PLACE WITH AN APPROVED MARINE BEDDING. COUPPING.
7. PAINT ALL FLYWOOD PRIOR TO APPLYING CEDAR DECKING. WITH AN APPROVED PRESERVATIVE. PAINT INSIDE OF CABINET WITH PRIMER AND 2 COATS OF AN APPROVED WHITE MARINE ENAMEL.



NO.		REVISION		DATE	
DISTRICT ENGINEER - SAUSALITO MARIN CITY SANITARY DISTRICT					
WHITLOW, HOFFMAN & ALBRITTON					
CIVIL & STRUCTURAL ENGINEERS					
SAN RAFAEL			CALIFORNIA		
MODIFICATIONS OF PRINCESS STREET PUMP STATION					
SAUSALITO-MARIN CITY SANITARY DISTRICT					
SAUSALITO CALIFORNIA					
SCALE: 1" = 1'-0"	DES. BY: BGA	SHEET NO. 2 OF 2	JOB NO. 12097.14		
DATE: JAN 1969	DRAW. BY: LWG	CHK. BY: [Signature]	DRW. NO.		