

Sausalito-Marín City Sanitary District

Generator Reliability Improvements Project

Mandatory Pre-Bid Presentation and Site Walk



A full set of Contract Documents and related Supplemental Project Information is available at various Bay Area Builders Exchanges and on the District's website at <http://smcsd.net> under Documents/Capital Improvement Projects. For additional information you may contact the District at 415-332-0244.

It is mandatory that all Bidders review and understand all content presented in this pre-bid presentation prior to submitting a Bid for the Project.

All Bidders must conduct a self-guided Project walk-through of all worksite locations. Bidders must include a signed statement of compliance for this requirement with their Bid submission or their Bid will be deemed non-responsive. A verification sheet is included at the end of Section 00100.

Addenda may be posted to the District's website through November 24, 2020.

It is the Contractor's responsibility to ensure all addenda are received and acknowledged on the bid form.

Bids can be submitted until **2:00 p.m., on December 1, 2020.** No late bids will be accepted or opened.

Bid Documents and Instructions

- Section 00200 – Instructions to Bidders
- Section 00400 – Bid Form

Construction Constraints, Permitting, Temporary Power and Bypass Pumping

- Section 01060 – Regulatory Requirements and Permits
- Section 01140 – Work Restrictions
- Section 01560 – Environmental Controls

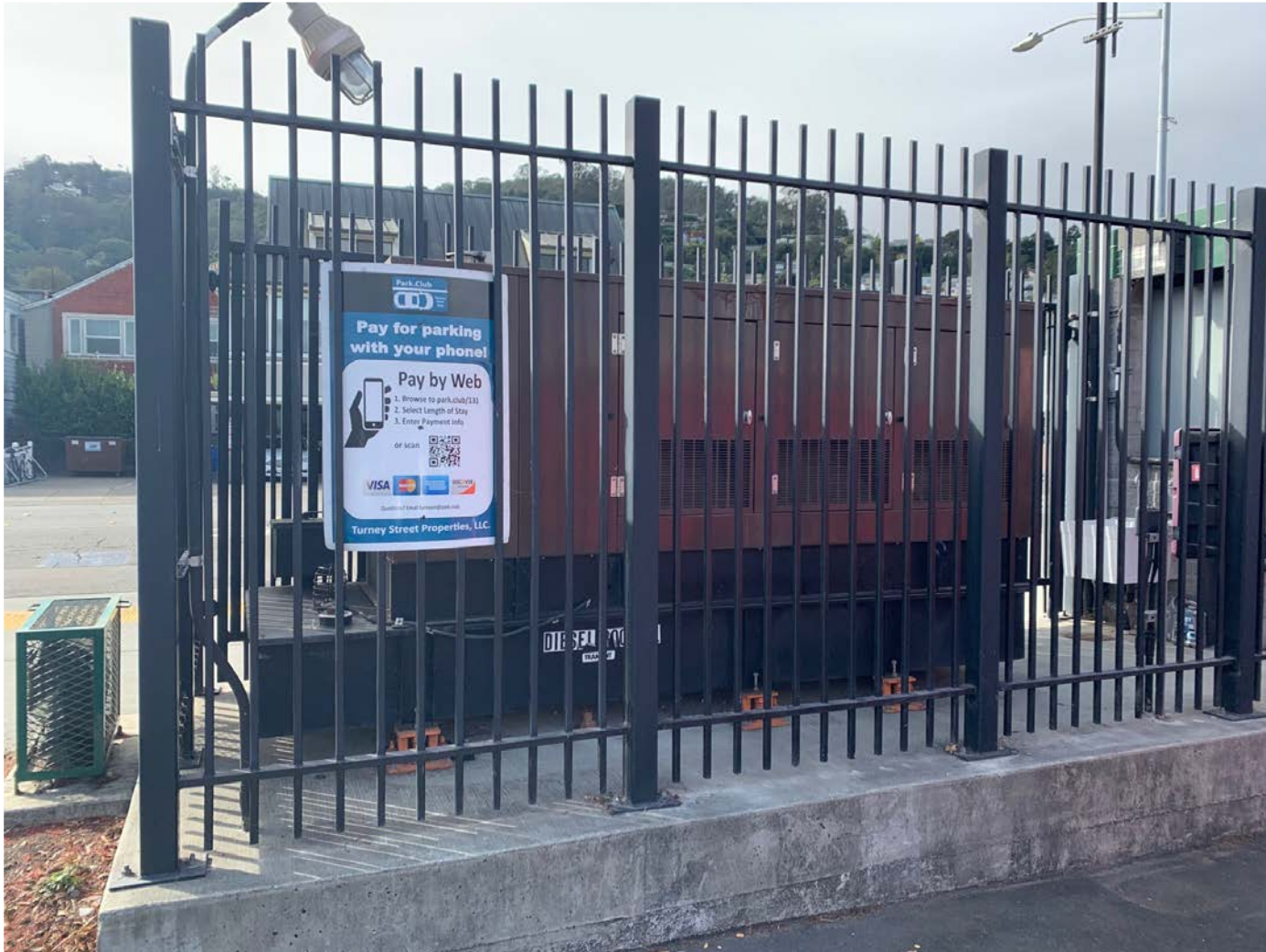
Note that this is not an exclusive list of requirements.

Generator Reliability Improvements Project

Project Requirements

- A region wide permit has been approved by the Bay Conservation and Development Commission (BCDC) for all work required within 100 feet of the shoreline.
- Prior to mobilizing the Contractor must obtain an Encroachment Permit from the City of Sausalito, see section 01060 "Regulatory Requirements and Permits". Contractor shall obtain approval of a SWPPP, Traffic Control Plan and Staging Request (as needed) in order to obtain an Encroachment Permit. (No Contractor permits are required for work at the Marin City Pump Station or the Treatment Plant.)
- For work at the Princess pump station, all trench-plates in roadways must be recessed even with asphalt due to heavy bike traffic, and ADA rules will remain in effect along the sidewalk at all times.
- Groundwater discharge limits apply. No contaminated water or silt may be introduced into the sewer system. Contractor must monitor water quality during dewatering operations.
- Temporary power and/or bypass pumps will be required any time power must be cut off unless otherwise allowed by the Owner. All facilities require electric redundancy to ensure system reliability.
- If diesel-powered bypass pumps are used, a redundant pump will be required for reliability.

Locust Street Pump Station



- Located at Locust St. and Bridgeway.
- This area is subject to heavy foot and bike traffic.
- The perimeter gate opens toward Bridgeway.

Locust Street Pump Station



Bypass pumping or a backup generator will be required to support work. See Section 01140.

For bypass the suction would be in the wet well and the discharge connection located in an accessible vault.

Gate 5 Pump Station



- Located at 305 Gate 5 Road.
- This area is subject to flooding during high tides in excess of 6'.
- Hoist truck access is limited and a Comcast cable is immediately above the generator location.

Gate 5 Pump Station



Bypass pumping or a backup generator will be required to support work. See Section 01140.

Bypass connections are accessible but will further hinder vehicle access.

Marin City Pump Station



- Located behind Target in Marin City's Gateway shopping center.
- Removal and installation of the generator may require temporary removal of the existing fence.

Marin City Pump Station



Bypass pumping or a backup generator will be required to support work. See Section 01140.

Bypass connections are located in accessible vaults.

Work includes replacement of the Automatic Transfer Switch.

Anchor St. Pump Station



- Located at the intersection of Anchor St. and Humboldt Ave. in Sausalito.
- Work includes the addition of a transfer switch and a small generator on a concrete pad.
- No bypass pumping or backup generator is required at this location.
- The location of the generator pad and transfer switch shall be coordinated with the City of Sausalito.
- The Work location is in a City parking lot with heavy vehicle and foot traffic.

Spinnaker Dr. Pump Station



- Located in The Spinnaker Restaurant's parking lot near the end of Spinnaker Dr.
- Work includes the addition of a transfer switch and a small generator on a concrete pad.
- No bypass pumping or backup generator is required at this location.
- The location of the generator pad and transfer switch shall be coordinated with the City of Sausalito.
- The Work location is in a valet parking lot with light vehicle and foot traffic.

Main Street Pump Station



- Located at the East end of Main St. adjacent to the Bay.
- This area may be fenced off to restrict public access near the pump station.
- Work is adjacent to the Portofino Apartments. Work hours and noise restrictions shall be as specified in the Contractor's Encroachment Permit.

Main Street Pump Station



- A backup generator will be required. The generator may be staged in existing parking spaces on Main St. Contractor must obtain no parking signs from the City of Sausalito.
- The City's Boardwalk must remain open during construction. ADA requirements apply for all areas remaining open to public access.

Main Street Pump Station



- Work includes the removal of an underground storage tank and installation of an above ground storage tank. See Section 01364 for soil testing and reporting requirements.
- Work includes modifications to the existing cooling system, installation of a new day tank and replacement of the access doors with a roll-up style door.

Treatment Plant



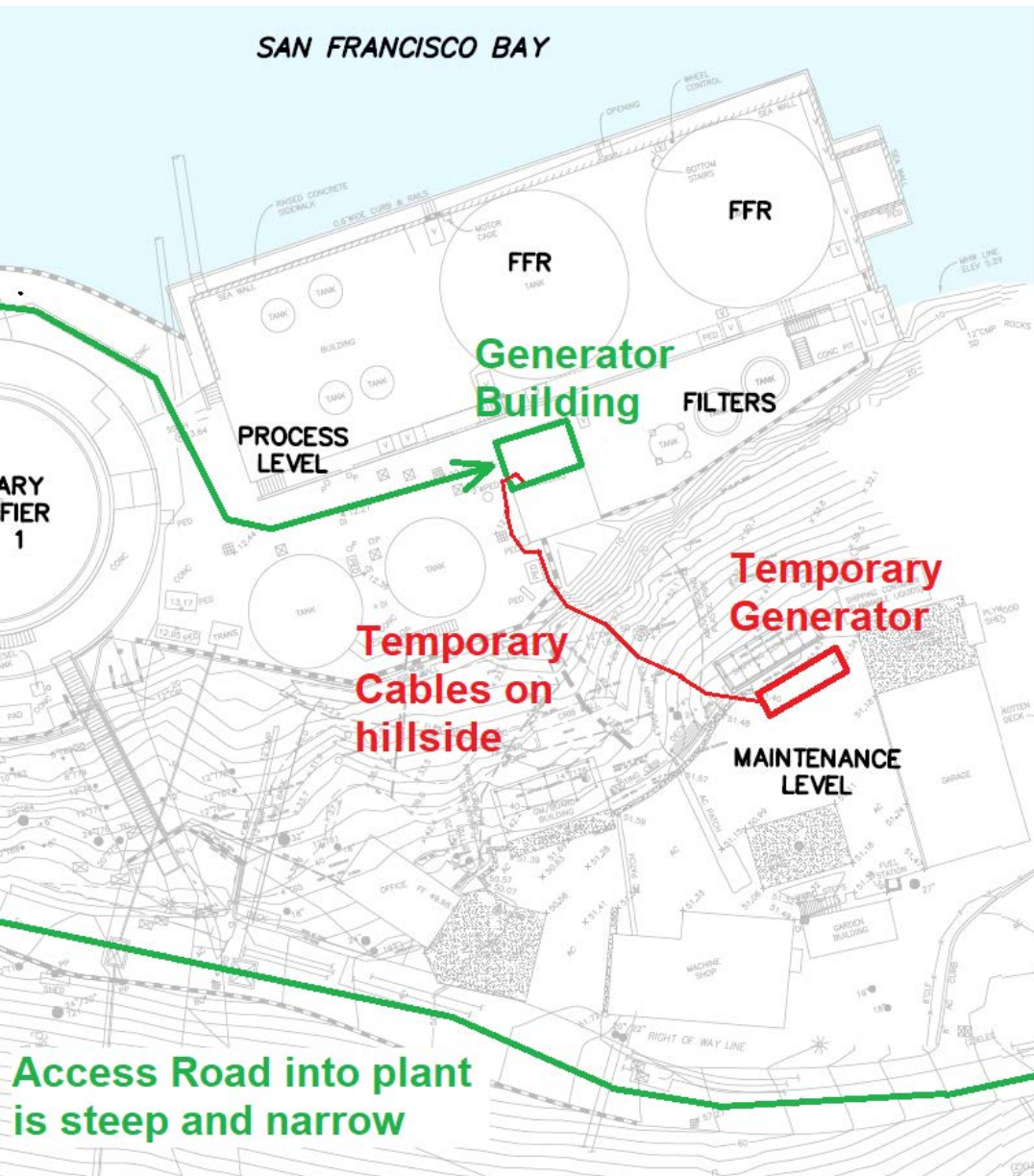
- Located at 1 East Rd. in the center of an operating sewer treatment plant.
- Coordination with treatment plant operators will be required for all Work.
- Normal plant hours are 6:00 AM till 4:00 PM. Work outside of these hours may be allowable but must be requested well in advance for staff scheduling.

Treatment Plant



- Work includes modifications to the existing exhaust system, installation of a new automatic transfer switch and replacement of the access doors with a roll-up style door.
- The District's front loader will require coordination in order to remove or deliver materials.
- The plant's access road will not support access for large delivery trucks.

Treatment Plant



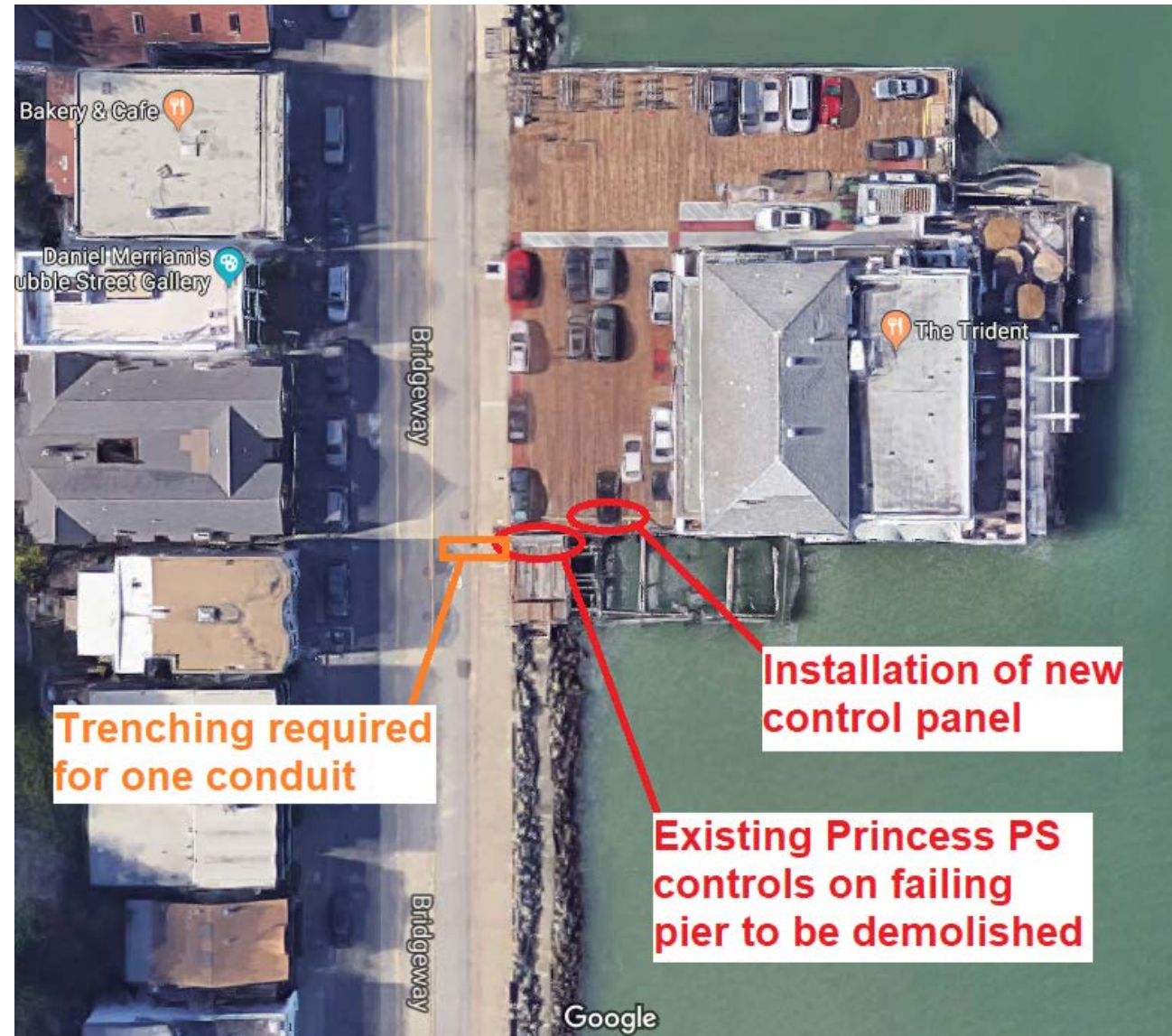
- A backup generator will be required. The generator may be staged at the Maintenance Level as shown and cables run down the hillside to the transfer switch.
- Replacement of the transfer switch will require a plant shutdown and will be limited in duration. A work plan must be submitted and approved at least 3 weeks in advance.
- Space is limited within the operating treatment plant. Staging areas must be approved in advance and may be remote from the generator building.

Princess Street Pump Station

Work includes the replacement and relocation of the Pump Station's Control Panel, installation of electrical pull boxes and installation of new floats inside the wet well.



Princess Street Pump Station



- A backup generator will be required any time PG&E power is not available for greater than 1 hour. If required to run overnight the City of Sausalito's noise level restrictions will apply.
- All trench-plates in the roadway must be recessed to be even with existing asphalt due to heavy bike traffic. Traffic control will also be required as approved by the City of Sausalito per the Contractor's Encroachment Permit.
- The sidewalk adjacent to the control panel has heavy use foot traffic. ADA requirements apply for all areas remaining open to public access.
- Contractor must coordinate all Work with the valet on the adjacent dock. No Contractor parking is permitted on the dock unless approved by the valet.
- Work at this location is restricted between Memorial Day and Labor Day unless otherwise approved by the City of Sausalito.

Generator Reliability Improvements Project

Project Coordination

- Long lead time generators must be submitted for approval and placed on order on a priority basis. The Treatment plant and Main Street generators are the most critical replacements for the District. The District's goal is to expedite installation of these generators prior to September 2021 in anticipation of Public Safety Power Shutoff (PSPS) events by PG&E.
- Early coordination with PG&E will be critical in order to schedule power outages. PG&E's coordination and scheduling has consistently been very poor. The District has already taken efforts to plan with PG&E in advance in order to help mitigate their performance issues.
- Bay Area Air Quality Management District (BAAQMD) permits require that the Contractor submit associated forms once engine data is available from the manufacturer. Delays in submitting permit forms will not constitute an extension of the contract time.
- Existing generators at Marin City, Gate 5 and Locust Street are to be protected and returned to the District as specified in Section 01738. Additional salvaged equipment is identified in Section 260000.

Coloma Pump Station Replacement Project



The construction cost estimate for all work is: **\$1.5 Million Dollars**
All work is to be completed within **300 (Three Hundred)** calendar Days

The District's Main Office is located at 1 East Road, Sausalito, California 94965

Bids can be submitted until **2:00 p.m., on December 1, 2020.**
(No late bids will be accepted or opened.)

For additional information you may contact the District at 415-332-0244

Thank you,
Kevin Rahman, District Engineer