

**SAUSALITO-MARIN CITY SANITARY DISTRICT**  
**SOUTH PRIMARY CLARIFIER REHABILITATION PROJECT**

**Addendum No. 1**

The following shall modify the Contract Documents. The work shall be accomplished in accordance with such modifications. It is required that this addendum be attached to the Specifications.

**IMPORTANT: Receipt of this Addendum must be acknowledged in the space provided on the Bid form when your bid is submitted. Failure to acknowledge receipt of this addendum may constitute grounds for rejection of the bid.**

**Addendum Items:**

- Item 1.1:** Materials: All hardware shall be 316 SS. All Unistrut shall be 316 SS or non-metallic. All steel including pipe supports, brackets, hangers, control panels, pedestals, etc. shall be 316 SS unless otherwise specified. Galvanized steel is not permitted. Conduits shall be PVC coated Rigid Galvanized Steel in all areas including indoor and dry locations.
- Item 1.2:** Thickener Demo: Demolish thickener mixer (motor, gearbox and mixing mechanism) as described in the **attachment “Addenda Item 1.2”**. Demo includes all mounting brackets and pipe supports. Existing stainless steel anchors may be abandoned in place. This work shall be included in the base bid amount for the project.
- Item 1.3:** Painting: Paint the following structures in accordance with Specification Section 09960, Protective Coatings. Owner will specify Sherwin Williams color codes. See attachment **“Addenda Item 1.3”** for locations and photos:
- a.** North Chemical Building on East Road
  - b.** Server Room on East Road
  - c.** Main Street Pump Station
  - d.** Main Street Fuel Tank

**Item 1.4:** Mandatory Pre-Bid Site Inspection: **See Section 100, Article 4.** All bidders must visit the project sites prior to submitting a bid to the District. The District will host a project walk on October 24 at 10 AM. The project walk will be held at the SMCSD Treatment Plant located at 1 East Road, Sausalito, CA 94965. Parking is available along the shoulder of East Road near the plant. Please park on East Road and walk to the plant area. Contractors may also conduct a self-guided tour or request an alternate time and date from the District.

**Item 1.5:** Bid Schedule: Contractor shall submit all bids using the Bid Schedule provided in **“Addenda Item 1.5”** which includes additional Bid items for Addenda items 1.2 and 1.3 from this Addenda 1. See Section 400, Bid Form. This addenda item replaces the Bid Schedule only (Paragraph III). All other requirements of Section 400 remain applicable.

**This Addendum No. 1 shall become part of the Contract and all provisions of the Contract shall apply thereto.**

## **Addenda Item 1.2**

### **Demolish Thickener Mechanism**

The existing thickener mechanism, including the motor, gearbox, mixer (located inside the thickener tank), and all piping and support brackets shall be removed and off-hauled for disposal/recycling by the Contractor. Existing conduit may be abandoned in place. Power will be disconnected by the District in advance. Stainless steel wall anchors may be abandoned in place.

The thickener will be dewatered by the District. Contractor shall remove all debris from the inside of the tank. Existing weirs are to be protected in place. The District's screw press delivers filtrate to the outside of the weirs. This process will continue during construction. No debris may enter the weir area during demo.

Work inside the tank requires confined entry protocol. Contractor shall provide all required confined entry equipment and follow their own confined entry program. (The District's confined entry equipment may not be used.)

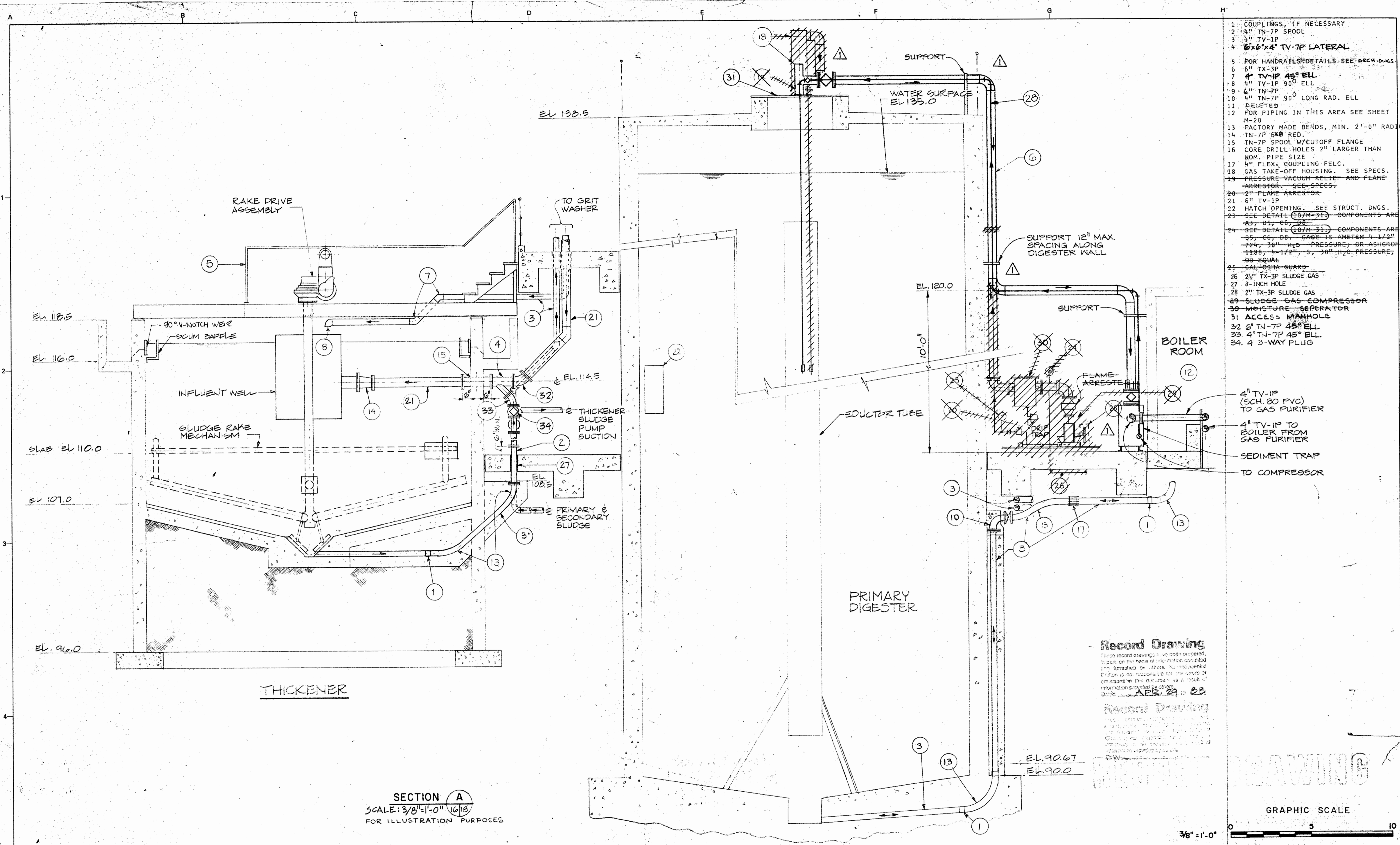
After demo the shaft hole shall be covered with aluminum diamond plate or fitted with an aluminum floor box for safety. If bolting is used, provide material isolators between aluminum and stainless steel.











- 1 COUPLINGS, IF NECESSARY
- 2 4" TN-7P SPOOL
- 3 4" TV-1P
- 4 6"x6"x4" TV-7P LATERAL
- 5 FOR HANDRAILS DETAILS SEE ARCH. DWGS.
- 6 6" TX-3P
- 7 4" TV-1P 45° ELL
- 8 4" TV-1P 90° ELL
- 9 6" TN-7P
- 10 4" TN-7P 90° LONG RAD. ELL
- 11 DELETED
- 12 FOR PIPING IN THIS AREA SEE SHEET M-20
- 13 FACTORY MADE BENDS, MIN. 2'-0" RADIUS
- 14 TN-7P 6X8 RED.
- 15 TN-7P SPOOL W/CUTOFF FLANGE
- 16 CORE DRILL HOLES 2" LARGER THAN NOM. PIPE SIZE
- 17 4" FLEX. COUPLING FELC.
- 18 GAS TAKE-OFF HOUSING. SEE SPECS.
- 19 PRESSURE VACUUM RELIEF AND FLAME ARRESTOR. SEE SPECS.
- 20 2" FLAME ARRESTOR
- 21 6" TV-1P
- 22 HATCH OPENING. SEE STRUCT. DWGS.
- 23 SEE DETAIL (10/M 31) COMPONENTS ARE A3, B5, C6, D8
- 24 SEE DETAIL (10/M 31) COMPONENTS ARE B5, C6, D8. GAGE IS AMETEK 4 1/2" 724, 30" H<sub>2</sub>O PRESSURE, OR ASHROFT 1188, 4 1/2", 5, 30" H<sub>2</sub>O PRESSURE, OR EQUAL
- 25 CAL-OSHA GUARD
- 26 2 1/2" TX-3P SLUDGE GAS
- 27 8-INCH HOLE
- 28 2" TX-3P SLUDGE GAS
- 29 SLUDGE GAS COMPRESSOR
- 30 MOISTURE SEPARATOR
- 31 ACCESS MANHOLE
- 32 6" TN-7P 45° ELL
- 33 4" TN-7P 45° ELL
- 34 4 3-WAY PLUG

**THICKENER**

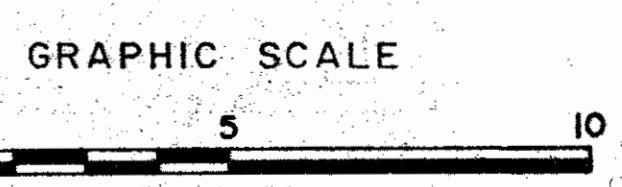
**PRIMARY DIGESTER**

**BOILER ROOM**

**SECTION A**  
 SCALE: 3/8" = 1'-0"  
 FOR ILLUSTRATION PURPOSES

**Record Drawing**  
 These record drawings have been prepared in part on the basis of information compiled and furnished by others. KennedyJenks Engineers is not responsible for any errors or omissions in this document as a result of information provided by others.  
 Date: APR 29 88

**Record Drawing**  
 These record drawings have been prepared in part on the basis of information compiled and furnished by others. KennedyJenks Engineers is not responsible for any errors or omissions in this document as a result of information provided by others.  
 Date: APR 29 88



CO NO. 35			
Revised	Description	Submit	Appr'd. Date
Refer to Tracing for Latest Revision			

Reference Information and Notes:

FOR TYPICAL EQUIPMENT ANCHORAGE SEE SHEET M-24  
 REFER TO THE NOTE WITH THIS NUMBER

**Wastewater Plant Improvements C-06-2464**  
**Sausalito - Marin City Sanitary District**

**KennedyJenks Engineers** San Francisco

Submitted: *Walter J. Hanna* CS 5376  
 Approved: *Robert J. Amey*

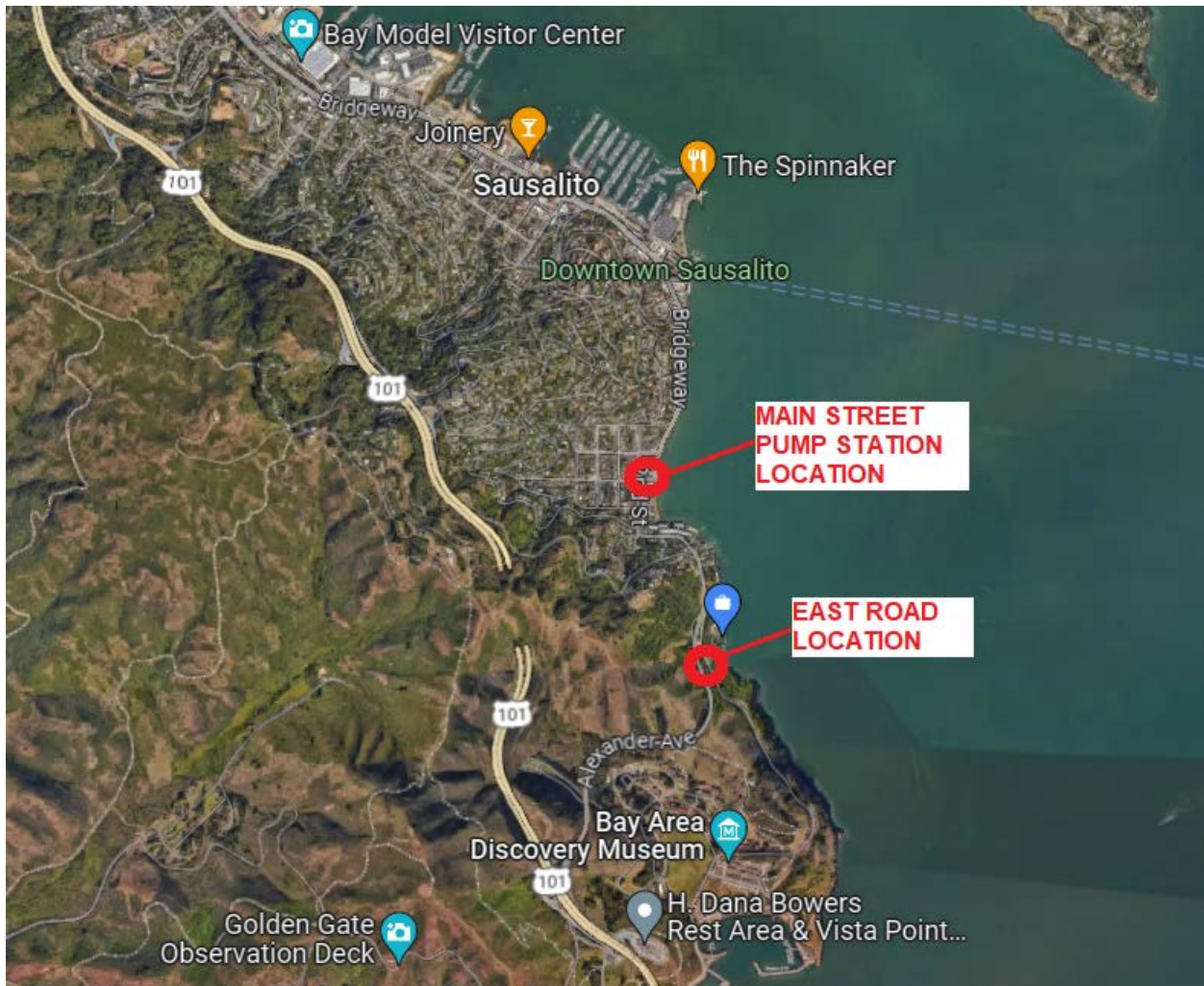
Checked: JHF  
 Date: 1-29-81

**THICKENER AND PRIMARY DIGESTER SECTIONS**

Scale: 3/8" = 1'-0"  
 Job No. 0112  
 Sheet **M-18**  
 of

## Addenda Item 1.3 Painting

Contractor shall prep and paint the following structures in accordance with Section 09960, "Protective Coatings":



**Addenda Item 1.3.1 - North Chemical Building on East Road:**





**Addenda Item 1.3.2 - Equipment Room on East Road:**



**Addenda Item 1.3.3 - Main Street Pump Station:**





**Addenda Item 1.3.4 - Main Street Fuel Cell:**



## **ADDENDA ITEM 1.5 – BID SCHEDULE**

Replace Paragraph III, **BID SCHEDULE**, of Section 400 with the following:

### **III BID SCHEDULE**

Pursuant to your published Invitation for Bids for the above-referenced project, and in accordance with the approved Plans and Specifications for that project, the following Bid for said entire project is submitted by the firm indicated on this Bid Form.

The undersigned Bidder proposes and agrees to contract with the District to perform all of the above work, including subsidiary obligations as defined in the Contract Documents for the prices indicated in the **BID SCHEDULE** below.

Pursuant to the provisions of the California Labor Code Section 6707, each bid submitted shall contain, in the bid, the amount included for adequate sheeting, shoring, and bracing, or equivalent method, for the protection of life and limb in trenches and open excavation, which shall conform to applicable safety orders. By listing this sum in base bid item 2 below, the Bidder warrants that its action does not convey tort liability to the Owner, the Engineer, the Construction Manager, and other employees, agents, and subconsultants.

Further in submitting its Bid, the undersigned Bidder understands and agrees that that the Total Bid Price are each determined by the sum total of all respective bid item amounts in the applicable Bid Schedule shown below. In the event the addition of the bid item extended amounts does not equal the Total Bid Price the corrected addition of all bid item extended amounts will govern and the Owner will correct the respective total(s) accordingly. In case of discrepancy between words and figures, words will prevail.

Bid Items are further described in Section 01200, Measurement and Payment, and in Addenda 1.

### **BID SCHEDULE**

Bid Items				
Item	Description	Approx. quantity	Unit	Total bid item price, dollars
1	Mobilization/Demobilization including SWPPP (not to exceed 6% of Total Bid Price)	1 Job	L.S.	
2	Sheeting, shoring, and bracing, or equivalent method for the protection of life and limb in trenches and open excavations, pursuant to California Labor Code Sections 6705 and 6707.	1 Job	L.S.	
3	All Work associated with the rehabilitation of the South Primary Clarifier	1 Job	L.S.	
4	All Work associated with the replacement of the scum/sludge pump stations	1 Job	L.S.	

Bid Items				
Item	Description	Approx. quantity	Unit	Total bid item price, dollars
5	All Work associated with replacement of the existing stop gates with new slide gates at the headworks.	1 Job	L.S.	
6	All other Work in accordance with the Contract Documents	1 Job	L.S.	
7	<b>Addenda Item 1.2:</b> Demolish thickener mixer	1 Job	L.S.	
---	<b>Addenda Item 1.3:</b> Painting	---	---	---
8	1.3.1 - Painting of North Chemical Building	1 Job	L.S.	
9	1.3.2 - Painting of Equipment Room	1 Job	L.S.	
10	1.3.3 - Painting of Main Street Pump Station	1 Job	L.S.	
11	1.3.4 - Painting of Main Street Fuel Tank	1 Job	L.S.	

TOTAL BID PRICE (Items 1 through 11) \$\_\_\_\_\_

TOTAL BID PRICE (in words)\_\_\_\_\_

**Bid prices shall include everything necessary for the completion of the work stipulated in the Contract Documents, including but not limited to providing the materials, equipment, tools, plant and other facilities, and the management, superintendence, labor and services. Bid prices shall include all federal, state and local taxes.**

The lowest bid will be based on the Total Bid Price. Bid prices shall include everything necessary for the completion of the work stipulated in the Contract Documents, including but not limited to providing the materials, equipment, tools, plant and other facilities, and the management, superintendence, labor and services. Bid prices shall include all federal, state and local taxes.