

Bill of Sale and Confirmation of Operational System Transfer

This Bill of Sale and Confirmation of Operational System Transfer (“BOS”) is entered into by the CITY OF SAUSALITO, a municipal corporation (referred to as “Seller” or “City”), and SAUSALITO MARIN CITY SANITARY DISTRICT, a sanitary district (“Buyer” or “District”) pursuant to Section 8 of that certain Memorandum of Understanding dated June 18, 2025, attached hereto as Exhibit “A” and incorporated herein by this reference (“MOU”).

On July 30, 2024, the City adopted Resolution Number 49-2024 to award a contract to Hardiman Construction Inc. (“Hardiman”) to construct the Block 303 Sewerage Improvement Project, a project to install a sewer ejection system for 19 parcels located in what is labeled as Block 303 on the County parcel maps (“Block 303 Project”). The City and Hardiman dispute the amount owed for the Block 303 Project, and the City and Hardiman continue to work through those claims (“Hardiman Dispute”).

Section 7 of the MOU requires the parties on or before the Operational Transfer to perform certain obligations for effectuating the fiscal transfer. The parties agree that the date of Operational Transfer, shall be the date this BOS is executed.

The City prepared an accounting, attached hereto as Exhibit “B” and incorporated herein by this reference, evidencing the payoff of certain financial transactions. Additionally, Exhibit B outlines the amount due by the District to the City in order to finalize the fiscal transfer outlined in Section 7 in amount of \$3,422,292. As part of that sum, the City requests, and the District agrees to a onetime payment of \$300,000 relating to the Block 303 Project. The City recognizes and agrees that any further funds necessary to close out the Block 303 Project will not come from any sewer service charge revenues received by the City received after the Operational Transfer, but from the City’s General Fund or any other lawfully available revenue source. The City will abide by the MOU Section 7(c)(i) that all revenue received by the City after the Operational Transfer and upon execution of this BOS shall be remitted within 30 days of the City’s receipt with no deductions whatsoever from the City.


Furthermore, the City agrees to indemnify, defend and hold harmless the District, directors, officers, representatives, administrators, agents, partners, employees, attorneys, insurers, successors and assigns (“Indemnified Parties”) from any and liability or claims (including actions, demands, damages, injuries, settlements, losses, or costs, including legal costs and attorneys’ fees), arising out of third-party claims for payment related to the construction of the Block 303 Project, including the Hardiman Dispute.

The Seller does hereby sell, transfer, assign and deliver to Buyer, certain sewer collection and trunk lines, referred to as the “City sewer collection system”, and all facilities, appurtenances, structures, and easements related thereto, which are more particularly described in Exhibits “C” (“Facilities and Items to be Acquired by Sausalito Marin City Sanitary District”) and “D” (“Sewer Location Map”) attached hereto and incorporated herein by this reference. Additionally, attached hereto as Exhibit “E” is a list of sewer system equipment that the City will transfer upon execution of the BOS pursuant to the MOU Section 3(b)(i). In accordance with MOU Section 7(c)(i), the Seller shall retain an interest in the City sewer collection system until June 30, 2026, for the sole purpose of collection of the sewer service charges to be remitted to the District.


The parties each agree and represent that they have the requisite authority to execute this BOS, and agree that all conditions precedent outlined in the MOU have either been satisfied or waived, with the exception Section 8(b), which the parties agree will be completed within six months of the execution of the BOS.

Dated: 8/22, 2025

CITY OF SAUSALITO,
a California municipal corporation


By: _____
Mayor

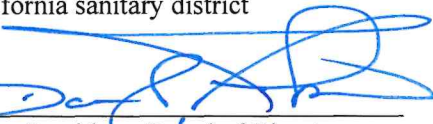
Attest:


City Clerk, City of Sausalito

Approved as to form:


City Attorney

SAUSALITO MARIN CITY SANITARY DISTRICT,
a California sanitary district


By: _____
Its: President, Board of Directors

Attest:


Board Secretary

Approved as to form:


District General Counsel

Exhibit A
Memorandum of Understanding dated June 18, 2025

MEMORANDUM OF UNDERSTANDING

This MEMORANDUM OF UNDERSTANDING (this “MOU”) is entered into by and between the Sausalito Marin City Sanitary District (“the District”) on the one hand and the City of Sausalito (“the City”) on the other hand. The District and the City are referred to herein each as a “Party” and collectively as “the Parties.” In consideration of the mutual promises contained in this MOU, the sufficiency of which consideration is hereby acknowledged, the Parties agree as follows:

RECITALS

WHEREAS, Sausalito Marin City Sanitary District (“the District”) is a Special District formed pursuant to California Health and Safety Code section 6400 et seq.; and

WHEREAS, the City of Sausalito (“the City”) is an incorporated municipality; and

WHEREAS, the City is responsible for, manages, and maintains approximately 20 miles of sanitary collection system pipe, and also owns four pump stations with associated force-mains (collectively, “sewer collection system”) which convey sanitary flow to the District’s facilities for further conveyance, treatment, and permitted discharge; and

WHEREAS, the City and the District facilitated an initial Phase I study by Causey Consulting to determine if Collection System Transfer of the City’s sewer collection system into the District is viable; and

WHEREAS, on or about June 23, 2020, the Phase I Collection System Transfer study was presented to the Sausalito City Council, which indicated that Collection System Transfer is viable and would be beneficial and cost effective to tax paying property owners in the City of Sausalito; and

WHEREAS, on or about June 24, 2020, the District’s Board accepted the Phase I study from Paul Causey consulting; and

WHEREAS, on or about October 5, 2020, the District and the City moved forward with a Phase II study, which was completed in December 2020, and identified specific concerns and tasks to be addressed prior to considering Collection System Transfer; and

WHEREAS, on or about November 17, 2020, the City Council received and filed a report on the Phase II study that identified the need for a closed-circuit television inspection of the city’s entire gravity portion of the sewer collection system as a critical task to be completed prior to moving forward with Collection System Transfer discussions; and

WHEREAS, on or about June 2, 2021 the District’s Board received the Phase II study from Paul Causey as an informational item, denoting several issues related to Collection System Transfer that need to be addressed prior to the transfer of the City’s system to the District; and

WHEREAS, on August 15, 2022, the District's Sewer Committee met with representatives of the City to receive a report from VW Housen & Associates regarding the City's sewer collection system; and

WHEREAS, based upon the Housen assessment, a total of \$18.2M in repairs are needed based on present value estimates.

WHEREAS, the District estimates the total cost of these Capital Improvements over the next 10 years to be approximately \$36M; and

WHEREAS, the City has completed this task of televising its collection system and on or about October 11, 2022, the City Council received a report from the City's consultant VW Housen & Associates regarding the Collection System Transfer which summarized the current condition of the city's gravity sewer collection system and the probable present value of \$18.2M cost to upgrade this system to meet industry best practices for gravity sewer asset management; and

WHEREAS, on or about October 11, 2022, the City Council recommended that staff continue to pursue the Collection System Transfer of the City's sewer system to the District; and

WHEREAS, the City will continue to operate and maintain their storm drainage system; and

WHEREAS, both the City and District wish to continue to pursue Collection System Transfer of the City's sewer collection system into the District.

AGREEMENT

NOW, THEREFORE, IT IS HEREBY RESOLVED that to facilitate the Collection System Transfer of the City's sewer collection system into the District, the City and District agree to perform the steps set forth below:

1. Definition of Collection System Transfer. For purposes of this MOU, the following terms are defined:

"Operational Transfer" means the transfer of operations and maintenance of the City's sewer collection system to the District from the City, pursuant to the license under Section 3.

"Operational Transfer Date" means the date for Operational Transfer as determined by the parties in accordance with Section 9.

"Legal Transfer" means the transfer of title to the City's sewer collection system from the City to the District, pursuant to Section 8.

"Legal Transfer Date" means the date for Legal Transfer as determined by the parties in accordance with Section 9.

"Collection System Transfer" means the completion of both Operational Transfer and

Legal Transfer of the sewer collection system from the City to the District.

2. Capital Condition Assessment and Understanding.

- (a) The sewer collection system condition assessment, prepared by the City's consultant VW Housen & Associates, indicates that improvements are needed and should be utilized to rehabilitate severe Structural Grade 5 and Structural Grade 4 defects as defined by the National Association of Sewer Service Companies.
- (b) The City created a list of sewer project priorities for rehabilitation and will continue to implement capital projects to address the highest risk areas of the sewer collection system, in a capital program prior to the Collection System Transfer Date. The City may make modifications to the capital program based on field assessments and staff identification of higher priority projects. The City will share any modifications to the capital program with the District on an annual basis or when modifications are made to the list that impact District infrastructure. The District will coordinate and share the details regarding their capital improvement program with the City prior to the Collection System Transfer Date.

3. Operational Transfer and Management. As of the Operational Transfer Date, the City grants to the District a license to collect and transmit all sewerage and effluent generated within the City to the District's treatment facilities, expressly including rights to operate, construct and maintain the City's sewer collection system within the City right of way and in such City easements as are dedicated or authorized for sewer collection purposes, until such time as the District and City complete Legal Transfer and the District is the owner of the City's sewer collection system. On or before the Operational Transfer Date, the Parties shall undertake the following actions:

- (a) Personnel/Pensions
 - (i) Upon Collection System Transfer, the District at their sole discretion may hire the current City sewer collection staff, up to 2 full time employees, under current District salary schedules and benefits.
 - (ii) CalPERS benefits for any District hired City staff member will continue and be based upon the District's current contract with CalPERS. City staff transferred to the District will follow current Human Resources policies and Operating Engineers #3 - MOU standards.
 - (iii) The City's pension liability for these staff members will be funded from the City's sewer enterprise fund and not transferred to the District. After prepayment of such pension liability, the City will transfer the remaining enterprise fund reserve to the District for the District's use, subject to the provisions of Section 7 .

(b) Equipment.

- (i) The City shall create an inventory of sewer system equipment so that the District may decide which equipment will be transferred at the time of Collection System Transfer. The District will be responsible for any equipment transferred after transfer.
- (ii) On occasion and as approved by the District Manager and the City Engineer, sanitary equipment may be shared by each agency.

(c) Additional Operational/Management Issues for Collection System Transfer

- (i) Before Collection System Transfer, the City shall identify and locate system smart covers and data to be transferred to the District and shall share this information with the District.
- (ii) Upon Collection System Transfer, the District shall be responsible for source control, including administration of a Fats Oils and Grease (FOG) control program and activities.
- (iii) After Collection System Transfer, the District shall perform inspections of new sanitary work and connections including but not limited to private common sewer lateral(s), private laterals and other facilities related to providing sanitary services for property owners located in the City of Sausalito.
- (iv) After Collection System Transfer, the City shall not require an encroachment permit for standard maintenance operations; however, the District shall specifically coordinate standard maintenance work, if possible, prior to performing work on Bridgeway Blvd., Spencer Avenue, 2nd Street and Alexander Avenue. If a contractor is utilized for standard maintenance operations the District shall provide the City with a copy of the contractor's insurance certification naming the City of Sausalito as additionally insured.
- (v) After Collection System Transfer, the District shall procure encroachment permits from the City for capital projects that are not standard maintenance operations.
- (vi) After Collection System Transfer, emergency work to be performed by the District will not need an Encroachment Permit from the City; however, the District will be required to notify the City's Department of Public Works and Emergency Services Dispatch of such work. Traffic control measures utilized for maintenance work shall comply with applicable safety standards.
- (vii) Upon Operational Transfer, the District shall be the Legally Responsible Official (LRO) of the City's sewer collection system and shall be responsible for all regulatory requirements included but not

limited to Sanitary Sewer Overflow (SSO) response(s).

- (viii) Upon Operational Transfer, the District shall manage lateral replacement activities, including the review of proposed improvements, inspection of existing and proposed improvements, and accepting repair of private common sewer lateral systems and private sewer laterals that connect to the sewer collection system.
- (ix) Upon Operational Transfer, the District shall be responsible for all sewer collection system regulatory reports.

4. Transfer of documents.

- (a) Transfer of Hard Files – the City shall scan, organize and deliver to the District all digital files for the sewer collection system and shall organize the files in appropriate folders for easy reference. The City shall transfer the files to the District using a mutually agreed method, prior to the completion of Collection System Transfer.
- (b) The City shall transfer all digital electronically stored maps of the sewer collection system to the District.
- (c) The City shall provide building permit file access related to the collection system to the District on an ongoing basis before and after Collection System Transfer.
- (d) The City shall transfer its maintenance management software and data to the District at the time of Operational Transfer or at another time acceptable to both Parties.
- (e) Within the first year after Collection System Transfer, the City shall make its employees and any consultants used for the file copying and organization process available to the District to answer questions about the files and transfer process at no cost to the District.

5. Public Outreach Process. Before Collection System Transfer, the City shall be responsible for conducting public outreach concerning the Sewer Collection System Transfer in consultation with the District. The public outreach related to the Collection System Transfer shall include the following:

- (a) The City will initiate the outreach process and may utilize a consultant to administer all aspects of the public outreach.
- (b) The City will be responsible for sending a preliminary mailer to all property owners regarding the Collection System Transfer and how to provide feedback. (The District will have the opportunity to review and comment on the mailer before it is finalized and sent, as set forth below.)
- (c) The City's public outreach materials, project schedule and cost estimates will be reviewed and approved by the District's and the City's Sewer Sub-

Committee prior to presentation to the public.

- (d) The parties shall include information about the Collection System Transfer on the City's and District's websites to explain the Collection System Transfer process and the expected impacts on property owners.
- (e) The City shall conduct public meetings and the District shall conduct at least one Board meeting to solicit input from property owners.

6. Future Relationship.

- (a) The Parties shall continue to work together and share resources under the Parties' mutual aid / good neighbor agreements and understandings.
- (b) The Parties shall cooperate on capital projects involving both Parties.
 - (i) The City will forward ratepayer complaints and inquiries from the Public to the District following the Operational Transfer.
 - (ii) The District will review Designs, Building Permits and conduct inspections for City sewer collection installations in compliance with timelines specified in the uniform building code for building permits and the timelines specified by the Sausalito Community Development Department for Planning Reviews.
- (c) Road closures will require notice to the City's Department of Public Works for emergencies.

7. Fiscal Transfer Process.

Subject to the timing set forth in MOU Section 9, the parties agree that on or before Operational Transfer, the following financial transactions will occur.

- (a) The City will use all funds available from its Sewer Enterprise Fund, including any available reserves, estimated at \$4,594,632, in order to pay the following outstanding obligations and debts:
 - (i) Future retiree pensions for former employees of the Sewer Enterprise Fund (calculated at \$1,595,687)
 - (ii) Other Post Employment Benefits ("OPEB") for former employees of the Sewer Enterprise Fund (calculated at \$443,791)
 - (iii) Clean Water Revolving Loan Fund pay off in full the remaining debt (currently estimated at \$568,918)
 - (iv) Any remaining funds available from the Sewer Enterprise Fund will be used to pay off in full the remaining debt on the 2015 Sewer Bond. That debt is currently estimated at \$5,185,000.
 - The remaining funds in the Sewer Enterprise Fund (after deducting payments made per MOU paragraphs 6(a)(i) through 6(a)(iii)) are estimated at \$1,986,236.

- To the extent there is a remaining debt owed on the 2015 Sewer Bond after making this payment (e.g., \$5,185,000 less \$1,986,236 = \$3,198,764), the District will pay that remaining debt amount to the City.

(b) Confirmation from City Regarding Outstanding Obligations and Debt.

(i) In regards to the amount stated in section 7(a)(ii), the City calculated the allocation of the OPEB liability, and the City agrees that the allocation methodology is consistently applied and supported by internal accounting schedules, and the Fiscal Year 2024 audited financial statements. Furthermore, the City agrees that the 7.52% allocation rate used in the allocation is grounded in historical practice and reflects a conservative, standardized share of benefit costs. Finally, the City agrees that there is no definitive employee-level data that exists to produce a more precise or materially better allocation.

(ii) In regards to the CalPERS pension liability to the Sewer Fund, the City agrees that the amount stated in section 7(a)(i) is based on the City's GASB 68 and pension leadsheet methodologies, consistent with the City's historical practices. Further, by executing this MOU, the City agrees that the amount of \$1,595,687 represents the full satisfaction and discharge of the City's Sewer Fund's pension obligation. Further, the City agrees that the District will not be liable for any actuarial increases that occur after execution of the MOU.

(iii) The City agrees that any excess reserve balances remaining after covering the pension and OPEB will be used exclusively to retire the obligations contained in section 7(a)(iii) and (iv).

(iv) The City agrees to provide to the District a final allocation and reconciliation statement affirming how the City's Sewer Fund reserves will be applied prior to taking action on any fiscal transfer required under section 7. Upon receipt, the District shall have ten business days to approve any transfer.

(v) The City agrees to provide the District with a final Sewer Fund closeout statement prepared in accordance with the City's audited financial statements to reconcile available resources at the time of the Collection System Transfer. The closeout statement should include, but not be limited to, a calculation of the amounts used to fully discharge pension, OPEB and debt obligations, the methodology for any remaining balance to be transferred, and confirmation that there are no liabilities being transferred to the District attributable to the Sewer fund post-transfer.

(vi) Indemnification. The City agrees to indemnify, defend and hold harmless the District, directors, officers, representatives, administrators, agents, partners, employees, attorneys, insurers, successors and assigns ("Indemnified Parties") from any and all liability or claims (including actions, demands, damages, injuries, settlements, losses, or costs, including legal costs

and attorneys' fees), related to any future reassignment of pension costs related to past City employees and/or reallocation decisions made by CalPERS relating to past City employees.

- (c) Imposing and Collecting Sewer Service Charges.
 - (i) For Fiscal Year 2025/2026, the City will comply with the requirements of Health and Safety Code Section 5473 to have City sewer service charges collected on the tax rolls (in accordance with City Ordinance No. 2024-03). Following Operational Transfer, all such sewer service charge revenue received by the City will be remitted to the District within 30 days of the City's receipt.
 - (ii) After Collection System Transfer, for Fiscal Year 2026/2027 and all subsequent years, (A) the City will not impose a sewer service fee related to the Sewer Collection System; and (B) the District will be responsible for imposing sewer service charges to cover the District's costs of operating and maintaining the Sewer Collection System in accordance with law.
- (d) The District shall cooperate with the City to manage the transfer. The District plans to utilize a third party Financial consultant to assist with the enterprise fund transfer.
- (d) The District will develop a 5-10 year Capital Plan to rehabilitate the City's sewer collection system.

8. Legal and Administration Issues.

- (a) To effectuate the Legal Transfer, the parties shall execute a Bill of Sale in substantially similar form to Exhibit A on the Legal Transfer Date. The City shall convey the sewer collection to the District on an "As-Is with All Faults" basis, with no warranties of any kind.
- (b) The City will develop a list identifying locations where the Sewer Collection System crosses private property, as well as known easements, licenses or other real property interests that the City owns or utilizes in connection with the sewer collection system that may be affected by the Collection System Transfer before Collection System Transfer prior to the Collection System Transfer. The City will not be required to conduct a title investigation. The parties agree to take any necessary action to transfer any easement rights from the City to the District within six months of the Collection System Transfer.
- (c) Upon Collection System Transfer, the District will take responsibility for the sewer collection system. After Collection System Transfer the District will be responsible for all maintenance of the sewer collection system.
- (d) Upon Collection System Transfer, the City's existing maps with GIS will be

transferred to the District. The District will be responsible for map maintenance and development after Collection System Transfer.

- (e) Any liability for previous lawsuits and claims related to alleged regulatory violations prior to the Operational Transfer Date shall remain with the City and not transfer to the District.
- (f) Each party shall bear its own attorneys' fees and consultant costs with regard to this transfer of the collection system to the District.

9. Development of a Collection System Transfer Schedule.

The City and the District shall collaborate to develop a schedule with sufficient detail to understand the tasks and their approximate timeline for completion. By mutual agreement, the Parties may modify the schedule as needed to accomplish the task of Collection System Transfer in the most expeditious manner possible.

10. Effective Date. The MOU shall be effective as of the last date that it is signed by the Parties, when the signatures on the MOU are complete ("the Effective Date").

11. Termination. This MOU shall terminate upon completion of the Collection System Transfer. Prior to either Operation System Transfer or the completion of financial transactions set forth in Section 7, either party may terminate participation in this MOU by providing 30-days' prior written notice.

12. Service Agreement. The parties executed in December 2024 that certain "Supplemental Agreement Between the City of Sausalito and the Sausalito-Marin City Sanitary District" ("Services Agreement") for the operations and maintenance of the 4 City pump stations prior to executing this MOU so that these critical services may continue to be provided by the District in parallel with Collection System Transfer. When the Operational Transfer is completed, the parties agree that the Services Agreement will terminate as it is no longer necessary. If this MOU terminates or if for any reason the Parties decide not to complete the Collection System Transfer or are otherwise unable to complete the Collection System Transfer, the Parties will discontinue the efforts outline in Paragraph 2 through 9 above, and the Parties will continue to operate under the updated service agreement for the City sewer collection system.

13. Notice. The following persons shall be the primary contact for implementing this MOU, and shall be given notice of any matters required or permitted under this MOU. Notice shall be given by email and shall be effective upon delivery.

- (a) For the City: Chris Zapata, City Manager; Email: czapata@sausalito.gov.
- (b) For the District: Jeffrey Kingston, General Manager; Email: jeffrey@smcsd.net.

14. Counterparts; Electronic Signature. This MOU may be executed in duplicate counterparts, all of which taken together shall constitute the complete agreement between the parties. Any such counterpart, when executed, shall constitute an original of MOU, and all such counterparts together shall constitute one and the same agreement. This MOU may also be executed and delivered by email signature, PDF, DocuSign or any other electronic signature

complying with the U.S. federal E-SIGN Act of 2000.

15. Assignment. Neither the District nor the City may assign any portion of this MOU without prior written authorization signed by both Parties.

16. Mediation of Disputes. Any dispute or claim in law or equity between the District and the City arising out of this MOU, if not resolved by informal negotiation between the parties, shall be mediated by referring it to the San Francisco office of Judicial Arbitration and Mediation Services, Inc. (JAMS). The JAMS administrator will circulate a list and resumes of available mediators with substantial experience in public agency disputes, to the Parties. The Parties shall confer on the list and select a mutually agreeable mediator, if possible (who need not be on the list provided). If the parties cannot agree to a mutually acceptable mediator, the parties may each strike one name from the list and return remaining list to the JAMS arbitrator administrator. If more than one name remains, JAMS arbitrations administrator will select a mediator from the remaining names. The mediation process shall continue until the dispute is resolved or until such time as the mediator makes a finding that the Parties are unable to reach a resolution. Each party shall bear its own attorneys' fees, costs, mediator expenses and other expenses associated with this mediation process.

17. Attorneys' Fees and Costs. Each Party shall bear their own attorneys' fees and costs and expert or consultant expenses incurred in connection with the tasks contemplated by this MOU and the drafting and negotiation of this MOU.

18. Severability. If any provision of this MOU is deemed or held invalid or unenforceable in whole or in part, for any reason, that provision shall be deemed severed from the remainder of this MOU, and shall in no way affect or impair the validity or enforceability of any portion or all of this MOU, which otherwise shall remain in full force and effect.

19. Headings. Headings used in this Agreement are for convenience of reference only, and shall not be considered a part of this Agreement or construed to affect the interpretation of any of its provisions.

20. Governing Law; Forum. This MOU is entered into in, and shall be construed and interpreted in accordance with the laws of, the State of California, notwithstanding any contrary conflicts or choice of law provisions or principles. Any legal action involving this MOU shall be brought in a court of competent jurisdiction located in Marin County, California.

21. No Presumption Regarding Drafter. This MOU was jointly negotiated and drafted by the Parties, such that it would be inappropriate to deem either Party to be the drafter of this MOU, and no presumption for or against validity or as to any interpretation hereof, based upon the identity of the drafter, shall be applicable in interpreting or enforcing this MOU.

22. Authority. Each individual signing this MOU represents and warrants that they are duly authorized and have legal capacity to execute and deliver this MOU, and that the MOU is a valid and legal agreement binding on each Party and enforceable in accordance with its terms.

23. Complete Agreement; Modification. This MOU contains the entire agreement of the parties, and constitutes the complete, final and exclusive embodiment of the subject matter of their agreement. This MOU supersedes any and all prior agreements, arrangements,

representations and understandings, whether written or oral, express or implied, with respect to its subject matter. This MOU may not be modified except by a writing, which specifically sets forth each modification and is signed by both Parties.

In witness whereof, the parties hereby enter into this Memorandum of Understanding as of the Effective Date.

SAUSALITO MARIN CITY SANITARY DISTRICT

By: [Signature]
Title: General Manager
Date: 6/18/2025

CITY OF SAUSALITO

By: [Signature]
Title: City Manager
Date: 6/18/25

APPROVED AS TO FORM:
CITY OF SAUSALITO

APPROVED AS TO FORM:
SAUSALITO MARIN CITY SANITARY DISTRICT

Signed by:
By: [Signature]
Name: Sergio Rudin
Title: City Attorney
Date: 6/18/2025

By: [Signature]
Name: Benjamin L. Stock
Title: District Counsel
Date: 6/18/25

**Exhibit A
Bill of Sale**

This Bill of Sale is given by the CITY OF SAUSALITO, a municipal corporation (referred to as "Seller"), and SAUSALITO MARIN CITY SANITARY DISTRICT, a sanitary district ("Buyer") pursuant to Section 8 of that certain Memorandum of Understanding dated _____, 2025, attached hereto as Exhibit "A" and incorporated herein by this reference.

The Seller does hereby sell, transfer, assign and deliver to Buyer, certain sewer collection and trunk lines, referred to as the "City sewer collection system", and all facilities, appurtenances, structures, and easements related thereto, which are more particularly described in Exhibits "B" ("Facilities and Items to be Acquired by Sausalito Marin City Sanitary District") and "C" ("Sewer Location Map") attached hereto and incorporated herein by this reference.

Dated: _____, 2025

CITY OF SAUSALITO,
a California municipal corporation

By: _____
Mayor

Attest:

City Clerk, City of Sausalito

SAUSALITO MARIN CITY SANITARY DISTRICT,
a California sanitary district

By: _____
Its: President, Board of Directors

Attest:

Board Secretary

Exhibit B
Facilities and Items to be Acquired by Sausalito Marin City Sanitary District

Exhibit C
Sewer Location Map

Exhibit B
**City Accounting Outlining Amount Due per MOU and the request for
additional onetime payment of \$300,000 for Block 303 Project**

City of Sausalito
 Sausalito-Marín City Sanitary District
 Transfer of Collection System from City to District

Financial Assets and Outstanding Obligations	Amounts		
Cash on Hand day prior to defeasance	\$	4,269,916.76	balance as of June 24th 2025 prior to payoff
BNY Sewer Interest 2015 -527 used for SRB payoff	\$	63,355.16	
BNY Sewer Project 2015 -529 used for SRB payoff	\$	21,990.71	
BNY Sewer Reserve 2015 -525 used for SRB payoff	\$	366,159.87	
Less: 2015 Sewer Revenue Bond (SRB)	\$	(5,185,000.00)	
Less: Accrued Interest (SRB)	\$	(84,690.64)	
Less: CA Waterboards Revolving Loan Fund (RLF)	\$	(534,497.58)	
Less: Accrued Interest (RLF)	\$	(38.60)	
Less: Pension	\$	(1,595,687.00)	Balance reported on 6/30/24 Audit Report: \$1,595,687
Less: OPEB	\$	(443,791.00)	Balance reported on 6/30/24 Audit Report: \$443,791
Cash to Close	\$	(3,122,282.32)	OPEB + Pension + Negative Sewer Fund Balance

Block 303	Amounts	
SMCSD Block 303 Contribution	\$	300,000.00
Less: Estimated Block 303 Expenses not yet paid**	\$	(637,000.00)
Net Total	\$	(337,000.00)

Exhibit C
Facilities and Items to be Acquired by Sausalito Marin City Sanitary District

Approximately 20 miles of sanitary collection system pipe and four pump stations with associated force-mains (collectively known as the “sewer collection system.”). The four pump stations are identified as Anchor, Spinnaker, Gate 5, and Coloma.

List of items and assets attached.

**CITY OF SAUSALITO
SANITARY SEWER VEHICLE AND EQUIPMENT INVENTORY
2025**

Item	Vehicle/ Equipm ent #	Description	Year	Original Cost	Comments	VIN	License Plate No.	Notes
SC-2	Silverado	1500 Quad Cab WT	2023	\$ 42,283.45	Sewer Coordinator Truck	3GCPAAEK8PG239636	1680172	
S3	Chevy	2500	1997	\$ 21,395.00	DPW Truck used by Sewer Crew	1GCGC2456WZ168878	E 100665	Needs replacing
N/A	Self Propelled Color Sewer Camera		2011	\$ 54,756.15	Aries PE 3400 Path Finder Reel capacity 1000'		N/A	Needs to be updated, not used. Vehicle that it was mounted in went to auction
121	Ford F-650 Super Cab XL		2011	\$ 64,049.00	Vehicle cab and chassis for Rodder	3FRXX6FE8BV397017	1320925	
	OK Champion Power Rodder		2011	\$ 116,000.00	Truck mounted continuous power rodder (8k) .393 d rod		N/A	
122	International 4000 Max Force DT Dura Star		2008	\$ 234,285.00	3 cubic yard mobile combination sewer cleaning vehicle (aka: Vactor)	iHTMMAAL39H090170	1266046	
N/A	Electronic Pipe Locators (2)		2000/2003	\$ 5,000.00	1250 each		N/A	Needs to be updated
N/A	Radio Detection Pipe Locator		2007	\$ 3,000.00	Transmitter emits 512 Hz X 2		N/A	
N/A	Confined Space Entry Equipment						N/A	
N/A	Tri-Pod		2006	\$ 2,800.00	With 2 wenches and 2 harnesses	N/A	N/A	
N/A	Air Ventilator		2000	\$ 250.00	1300 series Axial Blower 1375B	1411	N/A	
N/A	Ventis MX4 Gas Alert (3)		2003	\$ 4,500.00	3 hand-held gas detector (4 gas model)		N/A	
	Ventis Gas Alert Docking Station (2)						N/A	
N/A	Laptop Computer System (2)		2018		Coordinator computer X2 Zbook		N/A	Eg current, PG old. Same model. IT rebuilding PG
	HP Monitors 32" X2			\$1,800.00	Sewer Coordinators office			Currently use
N/A	Laptop Computer System (2)		2023		Sewer Staff Computer X 2		N/A	2 loaned out within the city?
N/A	iPad (3)		2023		Coordinator and staff X3		N/A	2 loaned out within the city?
N/A	iPhone (3)		Varies		Coordinator and Staff X3		N/A	2 loaned out within the city?
N/A	Honda EV2000 Generator				Camera Truck Power Supply		N/A	
N/A	Electric Snake Machine (Red)				Electric Hand Snake 5/8"	8290113	N/A	
N/A	CityWorks CMMS		2018/non-renewal 2025	\$ 750,000.00	Database of Entire SS System, Scheduling, Service Calls		N/A	CMMS need to be updated. No longer contract with CityWorks or any CMMS
N/A	AutoCAD Programing		Annual	\$ 1,600.00	1600 annual membership		N/A	No longer have.
	Smart cover Equip & Tools		12/24-12/26	58K	support, maint tool, repair parts + 1 new install kit			
SSO Response Equipment								
N/A	Godwin Dri-Prime Transfer Pump		2010		Godwin Model CD150M 6" 1/2 owned with SMCS			
N/A	SSO Response Two axle Trailer				Sewer Overflow Trailer with 50 barricades, 20 18" reflective cones.		N/A	SMCS may not have in posession anymore
NA					400 x 4" lay flat hose, 300' x 6" lay flat, 80' of ridged suction side with camlocks, toolbox with required tools, adapters, etc. Additional 30' of 6" and 4"		N/A	
N/A	4" Honda Trash Pump					GC05-4131487	N/A	
N/A	Cummins Mobil Gen Set		2011	?	Cummings QSB7 Engine with Power Comand	1M9DA19B4CM646886		Most likely 100% Enterprise funds
BOLDED ITEMS WERE PURCHASED WITH 50% SEWER FUNDS ONLY. ALL OTHERS ARE 100% SEWER FUNDING.								
M-1	Ford Escape		2005	\$ 20,040.00	Sport Utility Vehicle Pats Vehicle	1FMYU03115KB31859	E 1186885	Might be in Maintenance inventory, Formally coordinator vehicle SC-1
119	John Deere 310D Backhoe		1996	\$ 67,225.00	Extend Hoe	T0310DG817986	N/A	Needs replacing
106	International Dump Truck		1999	\$ 64,342.00	Automatic	14TSCAAN7X4225899	1008962	
N/A	Wacker			\$ 1,200.00	Viber-plate compaction machine		N/A	
N/A	Air Compressor		1997	\$ 1,700.00	Towable Air Compressor for breaking ground			

city purchased enterprise fund

Fund	Department	Asset Type	Asset Account	Acc. Dep. Account	Description	Parcel Number	Original Cost	Useful Life	Beginning Bal	Dep Expense	Ending Balance AC	Net Book Value
110	550	Infrastrucutre	110-000-1620-000	110-000-1680-010	Sewer Line Segments - Bridgeway		46,071.75	65	46,071.75	-	46,071.75	-
110	550	Infrastrucutre	110-000-1620-000	110-000-1680-010	Sewer Line Segments - Main Street		18,687.30	65	18,687.30	-	18,687.30	-
110	550	Infrastrucutre	110-000-1620-000	110-000-1680-010	Sewer Line Segments - Bridgeway		16,704.75	65	16,704.75	-	16,704.75	-
110	550	Infrastrucutre	110-000-1620-000	110-000-1680-010	Sewer Line Segments - Bridgeway		15,042.60	65	15,042.60	-	15,042.60	-
110	550	Infrastrucutre	110-000-1620-000	110-000-1680-010	Sewer Line Segments - Richardson Street		7,695.90	65	7,695.90	-	7,695.90	-
110	550	Infrastrucutre	110-000-1620-000	110-000-1680-010	Sewer Line Segments - Bridgeway		5,970.60	65	5,970.60	-	5,970.60	-
110	550	Infrastrucutre	110-000-1620-000	110-000-1680-010	Sewer Line Segments - Bridgeway		5,936.25	65	5,936.25	-	5,936.25	-
110	550	Infrastrucutre	110-000-1620-000	110-000-1680-010	Sewer Line Segments - Fourth Street		5,479.05	65	5,479.05	-	5,479.05	-
110	550	Infrastrucutre	110-000-1620-000	110-000-1680-010	Sewer Line Segments - Bridgeway		5,453.25	65	5,453.25	-	5,453.25	-
110	550	Infrastrucutre	110-000-1620-000	110-000-1680-010	Sewer Line Segments - Lower Crescent Avenue		5,420.85	65	5,420.85	-	5,420.85	-
110	550	Infrastrucutre	110-000-1620-000	110-000-1680-010	Sewer Line Segments - Second Street		5,253.60	65	5,253.60	-	5,253.60	-
110	550	Infrastrucutre	110-000-1620-000	110-000-1680-010	Sewer Line Segments - Second Street		5,238.15	65	5,238.15	-	5,238.15	-
110	550	Infrastrucutre	110-000-1620-000	110-000-1680-010	Sewer Line Segments - Atwood Avenue		5,156.10	65	5,156.10	-	5,156.10	-
110	550	Infrastrucutre	110-000-1620-000	110-000-1680-010	Sewer Line Segments - Bridgeway		5,148.15	65	5,148.15	-	5,148.15	-
110	550	Infrastrucutre	110-000-1620-000	110-000-1680-010	Sewer Line Segments - Bridgeway		4,923.15	65	4,923.15	-	4,923.15	-
110	550	Infrastrucutre	110-000-1620-000	110-000-1680-010	Sewer Line Segments - Fourth Street		4,876.20	65	4,876.20	-	4,876.20	-
110	550	Infrastrucutre	110-000-1620-000	110-000-1680-010	Sewer Line Segments - Third Street		4,772.40	65	4,772.40	-	4,772.40	-
110	550	Infrastrucutre	110-000-1620-000	110-000-1680-010	Sewer Line Segments - Bridgeway		4,567.95	65	4,567.95	-	4,567.95	-
110	550	Infrastrucutre	110-000-1620-000	110-000-1680-010	Sewer Line Segments - Bridgeway		4,518.30	65	4,518.30	-	4,518.30	-
110	550	Infrastrucutre	110-000-1620-000	110-000-1680-010	Sewer Line Segments - Bridgeway		4,517.40	65	4,517.40	-	4,517.40	-
110	550	Infrastrucutre	110-000-1620-000	110-000-1680-010	Sewer Line Segments - Bridgeway		4,511.10	65	4,511.10	-	4,511.10	-
110	550	Infrastrucutre	110-000-1620-000	110-000-1680-010	Sewer Line Segments - Prospect Avenue		4,496.85	65	4,496.85	-	4,496.85	-
110	550	Infrastrucutre	110-000-1620-000	110-000-1680-010	Sewer Line Segments - Bridgeway		4,479.75	65	4,479.75	-	4,479.75	-
110	550	Infrastrucutre	110-000-1620-000	110-000-1680-010	Sewer Line Segments - Bridgeway		4,458.45	65	4,458.45	-	4,458.45	-
110	550	Infrastrucutre	110-000-1620-000	110-000-1680-010	Sewer Line Segments - Bridgeway		4,423.95	65	4,423.95	-	4,423.95	-
110	550	Infrastrucutre	110-000-1620-000	110-000-1680-010	Sewer Line Segments - Bridgeway		4,219.65	65	4,219.65	-	4,219.65	-
110	550	Infrastrucutre	110-000-1620-000	110-000-1680-010	Sewer Line Segments - Bridgeway		4,158.30	65	4,158.30	-	4,158.30	-
110	550	Infrastrucutre	110-000-1620-000	110-000-1680-010	Sewer Line Segments - Bridgeway		4,081.05	65	4,081.05	-	4,081.05	-
110	550	Infrastrucutre	110-000-1620-000	110-000-1680-010	Sewer Line Segments - Bridgeway		4,047.15	65	4,047.15	-	4,047.15	-
110	550	Infrastrucutre	110-000-1620-000	110-000-1680-010	Sewer Line Segments - Second Street		3,887.40	65	3,887.40	-	3,887.40	-
110	550	Infrastrucutre	110-000-1620-000	110-000-1680-010	Sewer Line Segments - Second Street		3,887.40	65	3,887.40	-	3,887.40	-
110	550	Infrastrucutre	110-000-1620-000	110-000-1680-010	Sewer Line Segments - Second Street		3,886.80	65	3,886.80	-	3,886.80	-
110	550	Infrastrucutre	110-000-1620-000	110-000-1680-010	Sewer Line Segments - Crescent Avenue		3,878.10	65	3,878.10	-	3,878.10	-
110	550	Infrastrucutre	110-000-1620-000	110-000-1680-010	Sewer Line Segments - South Street		3,803.55	65	3,803.55	-	3,803.55	-
110	550	Infrastrucutre	110-000-1620-000	110-000-1680-010	Sewer Line Segments - Bridgeway		3,771.75	65	3,771.75	-	3,771.75	-
110	550	Infrastrucutre	110-000-1620-000	110-000-1680-010	Sewer Line Segments - Sausalito Blvd.		3,756.75	65	3,756.75	-	3,756.75	-
110	550	Infrastrucutre	110-000-1620-000	110-000-1680-010	Sewer Line Segments - Crescent Avenue		3,738.60	65	3,738.60	-	3,738.60	-
110	550	Infrastrucutre	110-000-1620-000	110-000-1680-010	Sewer Line Segments - Bridgeway		3,706.05	65	3,706.05	-	3,706.05	-
110	550	Infrastrucutre	110-000-1620-000	110-000-1680-010	Sewer Line Segments - Sausalito Blvd.		3,686.40	65	3,686.40	-	3,686.40	-
110	550	Infrastrucutre	110-000-1620-000	110-000-1680-010	Sewer Line Segments - Second Street		3,601.95	65	3,601.95	-	3,601.95	-
110	550	Infrastrucutre	110-000-1620-000	110-000-1680-010	Sewer Line Segments - Valley Street		3,591.45	65	3,591.45	-	3,591.45	-
110	550	Infrastrucutre	110-000-1620-000	110-000-1680-010	Sewer Line Segments - Edwards Avenue		3,545.55	65	3,545.55	-	3,545.55	-
110	550	Infrastrucutre	110-000-1620-000	110-000-1680-010	Sewer Line Segments - Third Street		3,526.50	65	3,526.50	-	3,526.50	-
110	550	Infrastrucutre	110-000-1620-000	110-000-1680-010	Sewer Line Segments - Bridgeway		3,444.15	65	3,444.15	-	3,444.15	-
110	550	Infrastrucutre	110-000-1620-000	110-000-1680-010	Sewer Line Segments - Sausalito Blvd.		3,430.95	65	3,430.95	-	3,430.95	-
110	550	Infrastrucutre	110-000-1620-000	110-000-1680-010	Sewer Line Segments - Sausalito Blvd.		3,429.30	65	3,429.30	-	3,429.30	-
110	550	Infrastrucutre	110-000-1620-000	110-000-1680-010	Sewer Line Segments - Bridgeway		3,391.65	65	3,391.65	-	3,391.65	-
110	550	Infrastrucutre	110-000-1620-000	110-000-1680-010	Sewer Line Segments - Crescent Avenue		3,326.85	65	3,326.85	-	3,326.85	-
110	550	Infrastrucutre	110-000-1620-000	110-000-1680-010	Sewer Line Segments - Second Street		3,286.65	65	3,286.65	-	3,286.65	-
110	550	Infrastrucutre	110-000-1620-000	110-000-1680-010	Sewer Line Segments - Bridgeway		3,228.00	65	3,228.00	-	3,228.00	-
110	550	Infrastrucutre	110-000-1620-000	110-000-1680-010	Sewer Line Segments - Bridgeway		3,137.25	65	3,137.25	-	3,137.25	-
110	550	Infrastrucutre	110-000-1620-000	110-000-1680-010	Sewer Line Segments - Third Street		2,866.95	65	2,866.95	-	2,866.95	-
110	550	Infrastrucutre	110-000-1620-000	110-000-1680-010	Sewer Line Segments - Bridgeway		2,846.40	65	2,846.40	-	2,846.40	-
110	550	Infrastrucutre	110-000-1620-000	110-000-1680-010	Sewer Line Segments - Bridgeway		2,672.70	65	2,672.70	-	2,672.70	-
110	550	Infrastrucutre	110-000-1620-000	110-000-1680-010	Sewer Line Segments - Main Street		2,656.05	65	2,656.05	-	2,656.05	-
110	550	Infrastrucutre	110-000-1620-000	110-000-1680-010	Sewer Line Segments - Prospect Avenue		2,484.00	65	2,484.00	-	2,484.00	-
110	550	Infrastrucutre	110-000-1620-000	110-000-1680-010	Sewer Line Segments - Bridgeway		2,292.90	65	2,292.90	-	2,292.90	-
110	550	Infrastrucutre	110-000-1620-000	110-000-1680-010	Sewer Line Segments - Sausalito Blvd.		2,247.60	65	2,247.60	-	2,247.60	-

110	550	Infrastrucutre	110-000-1620-000	110-000-1680-010	SEWER MANHOLE - Woodward Avenue	2,500.00	65	2,269.23	38.46	2,307.69	192.31
110	550	Infrastrucutre	110-000-1620-000	110-000-1680-010	SEWER MANHOLE - Woodward Avenue	2,500.00	65	2,269.23	38.46	2,307.69	192.31
110	550	Infrastrucutre	110-000-1620-000	110-000-1680-010	SEWER MANHOLE - Woodward Avenue	2,500.00	65	2,269.23	38.46	2,307.69	192.31
110	550	Infrastrucutre	110-000-1620-000	110-000-1680-010	SEWER MANHOLE - Woodward Avenue	2,500.00	65	2,269.23	38.46	2,307.69	192.31
110	550	Infrastrucutre	110-000-1620-000	110-000-1680-010	SEWER MANHOLE - Spring Street	2,500.00	65	2,269.23	38.46	2,307.69	192.31
110	550	Infrastrucutre	110-000-1620-000	110-000-1680-010	SEWER MANHOLE - Spring Street	2,500.00	65	2,269.23	38.46	2,307.69	192.31
110	550	Infrastrucutre	110-000-1620-000	110-000-1680-010	SEWER MANHOLE - Gordon Street	2,500.00	65	2,269.23	38.46	2,307.69	192.31
110	550	Infrastrucutre	110-000-1620-000	110-000-1680-010	SEWER MANHOLE - Spring Street	2,500.00	65	2,269.23	38.46	2,307.69	192.31
110	550	Infrastrucutre	110-000-1620-000	110-000-1680-010	SEWER MANHOLE - Spring Street	2,500.00	65	2,269.23	38.46	2,307.69	192.31
110	550	Infrastrucutre	110-000-1620-000	110-000-1680-010	SEWER MANHOLE - Spring Street	2,500.00	65	2,269.23	38.46	2,307.69	192.31
110	550	Infrastrucutre	110-000-1620-000	110-000-1680-010	Sewer Line Segments - Cazneau Avenue	2,583.70	65	2,345.20	39.75	2,384.95	198.75
110	550	Infrastrucutre	110-000-1620-000	110-000-1680-010	Sewer Line Segments - Central Avenue R/W	2,644.20	65	2,400.12	40.68	2,440.80	203.40
110	550	Infrastrucutre	110-000-1620-000	110-000-1680-010	Sewer Line Segments - Sunshine Avenue	2,704.20	65	2,454.58	41.60	2,496.18	208.02
110	550	Infrastrucutre	110-000-1620-000	110-000-1680-010	Sewer Line Segments - Sausalito Blvd.	2,795.75	65	2,537.68	43.01	2,580.69	215.06
110	550	Infrastrucutre	110-000-1620-000	110-000-1680-010	Sewer Line Segments - Pine Street	2,815.75	65	2,555.83	43.32	2,599.15	216.60
110	550	Infrastrucutre	110-000-1620-000	110-000-1680-010	Sewer Line Segments - Filbert Avenue R/W	2,867.90	65	2,603.17	44.12	2,647.29	220.61
110	550	Infrastrucutre	110-000-1620-000	110-000-1680-010	Sewer Line Segments - Glen Drive	2,879.80	65	2,613.97	44.30	2,658.28	221.52
110	550	Infrastrucutre	110-000-1620-000	110-000-1680-010	Sewer Line Segments - Prospect Avenue	2,995.50	65	2,718.99	46.08	2,765.08	230.42
110	550	Infrastrucutre	110-000-1620-000	110-000-1680-010	Sewer Line Segments - Sausalito Blvd. R/W	3,027.00	65	2,747.58	46.57	2,794.15	232.85
110	550	Infrastrucutre	110-000-1620-000	110-000-1680-010	Sewer Line Segments - Glen Drive	3,028.90	65	2,749.31	46.60	2,795.91	232.99
110	550	Infrastrucutre	110-000-1620-000	110-000-1680-010	Sewer Line Segments - Sausalito Blvd.	3,076.00	65	2,792.06	47.32	2,839.38	236.62
110	550	Infrastrucutre	110-000-1620-000	110-000-1680-010	Sewer Line Segments - Filbert Avenue	3,080.70	65	2,796.33	47.40	2,843.72	236.98
110	550	Infrastrucutre	110-000-1620-000	110-000-1680-010	Sewer Line Segments - Santa Rosa Avenue	3,119.90	65	2,831.91	48.00	2,879.91	239.99
110	550	Infrastrucutre	110-000-1620-000	110-000-1680-010	Sewer Line Segments - Cazneau Avenue	3,205.65	65	2,909.74	49.32	2,959.06	246.59
110	550	Infrastrucutre	110-000-1620-000	110-000-1680-010	Sewer Line Segments - Central Avenue	3,235.20	65	2,936.57	49.77	2,986.34	248.86
110	550	Infrastrucutre	110-000-1620-000	110-000-1680-010	Sewer Line Segments - Prospect Avenue	3,245.10	65	2,945.55	49.92	2,995.48	249.62
110	550	Infrastrucutre	110-000-1620-000	110-000-1680-010	Sewer Line Segments - Filbert Avenue	3,267.25	65	2,965.66	50.27	3,015.92	251.33
110	550	Infrastrucutre	110-000-1620-000	110-000-1680-010	Sewer Line Segments - Central Avenue	3,289.80	65	2,986.13	50.61	3,036.74	253.06
110	550	Infrastrucutre	110-000-1620-000	110-000-1680-010	Sewer Line Segments - Sausalito Blvd. R/W	3,383.10	65	3,070.81	52.05	3,122.86	260.24
110	550	Infrastrucutre	110-000-1620-000	110-000-1680-010	Sewer Line Segments - San Carlos Avenue	3,407.10	65	3,092.60	52.42	3,145.02	262.08
110	550	Infrastrucutre	110-000-1620-000	110-000-1680-010	Sewer Line Segments - Channing Way	3,494.75	65	3,172.16	53.77	3,225.92	268.83
110	550	Infrastrucutre	110-000-1620-000	110-000-1680-010	Sewer Line Segments - San Carlos Avenue	3,494.75	65	3,172.16	53.77	3,225.92	268.83
110	550	Infrastrucutre	110-000-1620-000	110-000-1680-010	Sewer Line Segments - Spring Street	3,507.35	65	3,183.59	53.96	3,237.55	269.80
110	550	Infrastrucutre	110-000-1620-000	110-000-1680-010	Sewer Line Segments - Pearl Street	3,621.45	65	3,287.16	55.71	3,342.88	278.57
110	550	Infrastrucutre	110-000-1620-000	110-000-1680-010	Sewer Line Segments - Glen Court	3,859.80	65	3,503.51	59.38	3,562.89	296.91
110	550	Infrastrucutre	110-000-1620-000	110-000-1680-010	Sewer Line Segments - Filbert Avenue	3,900.05	65	3,540.05	60.00	3,600.05	300.00
110	550	Infrastrucutre	110-000-1620-000	110-000-1680-010	Sewer Line Segments - Filbert Avenue	3,925.60	65	3,563.24	60.39	3,623.63	301.97
110	550	Infrastrucutre	110-000-1620-000	110-000-1680-010	Sewer Line Segments - Glen Drive	3,967.60	65	3,601.36	61.04	3,662.40	305.20
110	550	Infrastrucutre	110-000-1620-000	110-000-1680-010	Sewer Line Segments - Princess Street	3,999.45	65	3,630.27	61.53	3,691.80	307.65
110	550	Infrastrucutre	110-000-1620-000	110-000-1680-010	Sewer Line Segments - Oak Lane	4,020.30	65	3,649.20	61.85	3,711.05	309.25
110	550	Infrastrucutre	110-000-1620-000	110-000-1680-010	Sewer Line Segments - Filbert Avenue	4,189.85	65	3,803.09	64.46	3,867.55	322.30
110	550	Infrastrucutre	110-000-1620-000	110-000-1680-010	Sewer Line Segments - Sunshine Avenue	4,202.10	65	3,814.21	64.65	3,878.86	323.24
110	550	Infrastrucutre	110-000-1620-000	110-000-1680-010	Sewer Line Segments - Santa Rosa Avenue	4,260.90	65	3,867.59	65.55	3,933.14	327.76
110	550	Infrastrucutre	110-000-1620-000	110-000-1680-010	Sewer Line Segments - Sausalito Blvd.	4,282.25	65	3,886.97	65.88	3,952.85	329.40
110	550	Infrastrucutre	110-000-1620-000	110-000-1680-010	Sewer Line Segments - Glen Drive	4,287.15	65	3,891.41	65.96	3,957.37	329.78
110	550	Infrastrucutre	110-000-1620-000	110-000-1680-010	Sewer Line Segments - Locust Street	4,341.40	65	3,940.66	66.79	4,007.45	333.95
110	550	Infrastrucutre	110-000-1620-000	110-000-1680-010	Sewer Line Segments - Central Avenue	4,365.00	65	3,962.08	67.15	4,029.23	335.77
110	550	Infrastrucutre	110-000-1620-000	110-000-1680-010	Sewer Line Segments - Pearl Street	4,475.80	65	4,062.65	68.86	4,131.51	344.29
110	550	Infrastrucutre	110-000-1620-000	110-000-1680-010	Sewer Line Segments - Princess Street	4,552.80	65	4,132.54	70.04	4,202.58	350.22
110	550	Infrastrucutre	110-000-1620-000	110-000-1680-010	Sewer Line Segments - Filbert Avenue	4,571.35	65	4,149.38	70.33	4,219.71	351.64
110	550	Infrastrucutre	110-000-1620-000	110-000-1680-010	Sewer Line Segments - Cloudview Road	4,582.20	65	4,159.23	70.50	4,229.72	352.48
110	550	Infrastrucutre	110-000-1620-000	110-000-1680-010	Sewer Line Segments - Sausalito Blvd.	4,686.25	65	4,253.67	72.10	4,325.77	360.48
110	550	Infrastrucutre	110-000-1620-000	110-000-1680-010	Sewer Line Segments - Spencer Avenue	4,733.40	65	4,296.47	72.82	4,369.29	364.11
110	550	Infrastrucutre	110-000-1620-000	110-000-1680-010	Sewer Line Segments - Princess Street	4,757.20	65	4,318.07	73.19	4,391.26	365.94
110	550	Infrastrucutre	110-000-1620-000	110-000-1680-010	Sewer Line Segments - Glen Court	4,767.35	65	4,327.29	73.34	4,400.63	366.72
110	550	Infrastrucutre	110-000-1620-000	110-000-1680-010	Sewer Line Segments - Glen Drive	4,821.95	65	4,376.85	74.18	4,451.03	370.92
110	550	Infrastrucutre	110-000-1620-000	110-000-1680-010	Sewer Line Segments - Sausalito Blvd.	4,939.25	65	4,483.32	75.99	4,559.31	379.94
110	550	Infrastrucutre	110-000-1620-000	110-000-1680-010	Sewer Line Segments - Glen Drive R/W	5,014.45	65	4,551.58	77.15	4,628.72	385.73
110	550	Infrastrucutre	110-000-1620-000	110-000-1680-010	Sewer Line Segments - Central Avenue	5,121.00	65	4,648.29	78.78	4,727.08	393.92

110	550	Infrastrucutre	110-000-1620-000	110-000-1680-010	Sewer Line Segments - Harrison Avenue	5,148.85	65	4,673.57	79.21	4,752.78	396.07
110	550	Infrastrucutre	110-000-1620-000	110-000-1680-010	Sewer Line Segments - Spencer Avenue	5,174.05	65	4,696.45	79.60	4,776.05	398.00
110	550	Infrastrucutre	110-000-1620-000	110-000-1680-010	Sewer Line Segments - Glen Drive	5,251.05	65	4,766.34	80.79	4,847.12	403.93
110	550	Infrastrucutre	110-000-1620-000	110-000-1680-010	Sewer Line Segments - Central Avenue	5,322.30	65	4,831.01	81.88	4,912.89	409.41
110	550	Infrastrucutre	110-000-1620-000	110-000-1680-010	Sewer Line Segments - Bulkeley Avenue	5,353.95	65	4,859.74	82.37	4,942.11	411.84
110	550	Infrastrucutre	110-000-1620-000	110-000-1680-010	Sewer Line Segments - George Lane	5,455.10	65	4,951.55	83.92	5,035.48	419.62
110	550	Infrastrucutre	110-000-1620-000	110-000-1680-010	Sewer Line Segments - Sausalito Blvd. R/W	5,489.70	65	4,982.96	84.46	5,067.42	422.28
110	550	Infrastrucutre	110-000-1620-000	110-000-1680-010	Sewer Line Segments - Bulkeley Avenue	5,524.75	65	5,014.77	85.00	5,099.77	424.98
110	550	Infrastrucutre	110-000-1620-000	110-000-1680-010	Sewer Line Segments - Johnson Street	5,525.45	65	5,015.41	85.01	5,100.42	425.03
110	550	Infrastrucutre	110-000-1620-000	110-000-1680-010	Sewer Line Segments - Sausalito Blvd.	5,531.70	65	5,021.08	85.10	5,106.18	425.52
110	550	Infrastrucutre	110-000-1620-000	110-000-1680-010	Sewer Line Segments - Glen Drive	5,581.10	65	5,065.92	85.86	5,151.78	429.32
110	550	Infrastrucutre	110-000-1620-000	110-000-1680-010	Sewer Line Segments - Sacremento Way	5,594.10	65	5,077.72	86.06	5,163.78	430.32
110	550	Infrastrucutre	110-000-1620-000	110-000-1680-010	Sewer Line Segments - Bulkeley Avenue	5,620.65	65	5,101.82	86.47	5,188.29	432.36
110	550	Infrastrucutre	110-000-1620-000	110-000-1680-010	Sewer Line Segments - Sausalito Blvd. R/W	5,661.90	65	5,139.26	87.11	5,226.37	435.53
110	550	Infrastrucutre	110-000-1620-000	110-000-1680-010	Sewer Line Segments - Harrison Avenue	5,722.80	65	5,194.54	88.04	5,282.58	440.22
110	550	Infrastrucutre	110-000-1620-000	110-000-1680-010	Sewer Line Segments - Santa Rosa Avenue	5,762.75	65	5,230.80	88.66	5,319.46	443.29
110	550	Infrastrucutre	110-000-1620-000	110-000-1680-010	Sewer Line Segments - Cazneau Avenue	5,778.85	65	5,245.42	88.91	5,334.32	444.53
110	550	Infrastrucutre	110-000-1620-000	110-000-1680-010	Sewer Line Segments - Glen Drive	5,826.80	65	5,288.94	89.64	5,378.58	448.22
110	550	Infrastrucutre	110-000-1620-000	110-000-1680-010	Sewer Line Segments - Central Avenue	5,945.10	65	5,396.32	91.46	5,487.78	457.32
110	550	Infrastrucutre	110-000-1620-000	110-000-1680-010	Sewer Line Segments - Filbert Avenue	6,013.70	65	5,458.59	92.52	5,551.11	462.59
110	550	Infrastrucutre	110-000-1620-000	110-000-1680-010	Sewer Line Segments - San Carlos Avenue	6,081.90	65	5,520.49	93.57	5,614.06	467.84
110	550	Infrastrucutre	110-000-1620-000	110-000-1680-010	Sewer Line Segments - Filbert Avenue	6,098.40	65	5,535.47	93.82	5,629.29	469.11
110	550	Infrastrucutre	110-000-1620-000	110-000-1680-010	Sewer Line Segments - Filbert Avenue	6,101.20	65	5,538.01	93.86	5,631.88	469.32
110	550	Infrastrucutre	110-000-1620-000	110-000-1680-010	Sewer Line Segments - Filbert Avenue	6,105.75	65	5,542.14	93.93	5,636.08	469.67
110	550	Infrastrucutre	110-000-1620-000	110-000-1680-010	Sewer Line Segments - Filbert Avenue	6,126.05	65	5,560.57	94.25	5,654.82	471.23
110	550	Infrastrucutre	110-000-1620-000	110-000-1680-010	Sewer Line Segments - Spring Street	6,127.45	65	5,561.84	94.27	5,656.11	471.34
110	550	Infrastrucutre	110-000-1620-000	110-000-1680-010	Sewer Line Segments - Bulkeley Avenue	6,174.35	65	5,604.41	94.99	5,699.40	474.95
110	550	Infrastrucutre	110-000-1620-000	110-000-1680-010	Sewer Line Segments - Central Avenue	6,215.40	65	5,641.67	95.62	5,737.29	478.11
110	550	Infrastrucutre	110-000-1620-000	110-000-1680-010	Sewer Line Segments - Bulkeley Avenue	6,292.30	65	5,711.47	96.80	5,808.28	484.02
110	550	Infrastrucutre	110-000-1620-000	110-000-1680-010	Sewer Line Segments - Santa Rosa Avenue	6,350.05	65	5,763.89	97.69	5,861.58	488.47
110	550	Infrastrucutre	110-000-1620-000	110-000-1680-010	Sewer Line Segments - Glen Drive	6,370.35	65	5,782.32	98.01	5,880.32	490.03
110	550	Infrastrucutre	110-000-1620-000	110-000-1680-010	Sewer Line Segments - Spring Street	6,437.20	65	5,843.00	99.03	5,942.03	495.17
110	550	Infrastrucutre	110-000-1620-000	110-000-1680-010	Sewer Line Segments - Spencer Avenue	6,456.80	65	5,860.79	99.34	5,960.12	496.68
110	550	Infrastrucutre	110-000-1620-000	110-000-1680-010	Sewer Line Segments - Pine Street	6,539.75	65	5,936.08	100.61	6,036.69	503.06
110	550	Infrastrucutre	110-000-1620-000	110-000-1680-010	Sewer Line Segments - Booker Avenue	6,543.95	65	5,939.89	100.68	6,040.57	503.38
110	550	Infrastrucutre	110-000-1620-000	110-000-1680-010	Sewer Line Segments - Spencer Court	6,568.45	65	5,962.13	101.05	6,063.18	505.27
110	550	Infrastrucutre	110-000-1620-000	110-000-1680-010	Sewer Line Segments - Sausalito Blvd.	6,580.75	65	5,973.30	101.24	6,074.54	506.21
110	550	Infrastrucutre	110-000-1620-000	110-000-1680-010	Sewer Line Segments - Sausalito Blvd.	6,590.10	65	5,981.78	101.39	6,083.17	506.93
110	550	Infrastrucutre	110-000-1620-000	110-000-1680-010	Sewer Line Segments - Bulkeley Avenue	6,652.10	65	6,038.06	102.34	6,140.40	511.70
110	550	Infrastrucutre	110-000-1620-000	110-000-1680-010	Sewer Line Segments - Filbert Avenue	6,756.40	65	6,132.73	103.94	6,236.68	519.72
110	550	Infrastrucutre	110-000-1620-000	110-000-1680-010	Sewer Line Segments - Filbert Avenue	6,756.40	65	6,132.73	103.94	6,236.68	519.72
110	550	Infrastrucutre	110-000-1620-000	110-000-1680-010	Sewer Line Segments - Sunshine Avenue	6,822.30	65	6,192.55	104.96	6,297.51	524.79
110	550	Infrastrucutre	110-000-1620-000	110-000-1680-010	Sewer Line Segments - Bulkeley Avenue	6,895.35	65	6,258.86	106.08	6,364.94	530.41
110	550	Infrastrucutre	110-000-1620-000	110-000-1680-010	Sewer Line Segments - Humboldt Avenue	7,028.70	65	6,379.90	108.13	6,488.03	540.67
110	550	Infrastrucutre	110-000-1620-000	110-000-1680-010	Sewer Line Segments - Central Avenue	7,047.60	65	6,397.05	108.42	6,505.48	542.12
110	550	Infrastrucutre	110-000-1620-000	110-000-1680-010	Sewer Line Segments - Harrison Avenue	7,118.65	65	6,461.54	109.52	6,571.06	547.59
110	550	Infrastrucutre	110-000-1620-000	110-000-1680-010	Sewer Line Segments - Caledonia Street	7,185.50	65	6,522.22	110.55	6,632.77	552.73
110	550	Infrastrucutre	110-000-1620-000	110-000-1680-010	Sewer Line Segments - San Carlos Avenue	7,263.55	65	6,593.07	111.75	6,704.82	558.73
110	550	Infrastrucutre	110-000-1620-000	110-000-1680-010	Sewer Line Segments - Sausalito Blvd.	7,273.75	65	6,602.33	111.90	6,714.23	559.52
110	550	Infrastrucutre	110-000-1620-000	110-000-1680-010	Sewer Line Segments - Cazneau Avenue	7,278.95	65	6,607.05	111.98	6,719.03	559.92
110	550	Infrastrucutre	110-000-1620-000	110-000-1680-010	Sewer Line Segments - San Carlos Avenue	7,370.30	65	6,689.96	113.39	6,803.35	566.95
110	550	Infrastrucutre	110-000-1620-000	110-000-1680-010	Sewer Line Segments - Filbert Avenue	7,385.00	65	6,703.31	113.62	6,816.92	568.08
110	550	Infrastrucutre	110-000-1620-000	110-000-1680-010	Sewer Line Segments - San Carlos Avenue	7,442.40	65	6,755.41	114.50	6,869.91	572.49
110	550	Infrastrucutre	110-000-1620-000	110-000-1680-010	Sewer Line Segments - Glen Drive	7,502.95	65	6,810.37	115.43	6,925.80	577.15
110	550	Infrastrucutre	110-000-1620-000	110-000-1680-010	Sewer Line Segments - Cloudiview Road	7,686.00	65	6,976.52	118.25	7,094.77	591.23
110	550	Infrastrucutre	110-000-1620-000	110-000-1680-010	Sewer Line Segments - Humboldt Avenue	7,717.15	65	7,004.80	118.73	7,123.52	593.63
110	550	Infrastrucutre	110-000-1620-000	110-000-1680-010	Sewer Line Segments - Johnson Street	7,747.60	65	7,032.44	119.19	7,151.63	595.97
110	550	Infrastrucutre	110-000-1620-000	110-000-1680-010	Sewer Line Segments - Prospect Avenue	7,812.25	65	7,091.12	120.19	7,211.31	600.94
110	550	Infrastrucutre	110-000-1620-000	110-000-1680-010	Sewer Line Segments - Filbert Avenue	7,901.60	65	7,172.22	121.56	7,293.78	607.82

110	550	Infrastrucutre	110-000-1620-000	110-000-1680-010	Sewer Line Segments - Humboldt Avenue	7,912.45	65	7,182.07	121.73	7,303.80	608.65
110	550	Infrastrucutre	110-000-1620-000	110-000-1680-010	Sewer Line Segments - Locust Street	7,933.80	65	7,201.45	122.06	7,323.51	610.29
110	550	Infrastrucutre	110-000-1620-000	110-000-1680-010	Sewer Line Segments - Princess Street	7,980.70	65	7,244.02	122.78	7,366.80	613.90
110	550	Infrastrucutre	110-000-1620-000	110-000-1680-010	Sewer Line Segments - Sausalito Blvd.	8,024.50	65	7,283.78	123.45	7,407.23	617.27
110	550	Infrastrucutre	110-000-1620-000	110-000-1680-010	Sewer Line Segments - Napa Street	8,099.35	65	7,351.72	124.61	7,476.32	623.03
110	550	Infrastrucutre	110-000-1620-000	110-000-1680-010	Sewer Line Segments - Santa Rosa Avenue	8,122.80	65	7,373.00	124.97	7,497.97	624.83
110	550	Infrastrucutre	110-000-1620-000	110-000-1680-010	Sewer Line Segments - Spencer Avenue	8,183.00	65	7,427.65	125.89	7,553.54	629.46
110	550	Infrastrucutre	110-000-1620-000	110-000-1680-010	Sewer Line Segments - Cazneau Avenue	8,352.75	65	7,581.73	128.50	7,710.23	642.52
110	550	Infrastrucutre	110-000-1620-000	110-000-1680-010	Sewer Line Segments - Cazneau Avenue	8,380.40	65	7,606.82	128.93	7,735.75	644.65
110	550	Infrastrucutre	110-000-1620-000	110-000-1680-010	Sewer Line Segments - Glen Drive R/W	8,400.00	65	7,624.62	129.23	7,753.85	646.15
110	550	Infrastrucutre	110-000-1620-000	110-000-1680-010	Sewer Line Segments - Spencer Avenue	8,409.10	65	7,632.88	129.37	7,762.25	646.85
110	550	Infrastrucutre	110-000-1620-000	110-000-1680-010	Sewer Line Segments - Spencer Avenue	8,563.10	65	7,772.66	131.74	7,904.40	658.70
110	550	Infrastrucutre	110-000-1620-000	110-000-1680-010	Sewer Line Segments - Spring Street	8,748.25	65	7,940.72	134.59	8,075.31	672.94
110	550	Infrastrucutre	110-000-1620-000	110-000-1680-010	Sewer Line Segments - Atwood Avenue	8,874.90	65	8,055.68	136.54	8,192.22	682.68
110	550	Infrastrucutre	110-000-1620-000	110-000-1680-010	Sewer Line Segments - San Carlos Avenue	8,882.65	65	8,062.71	136.66	8,199.37	683.28
110	550	Infrastrucutre	110-000-1620-000	110-000-1680-010	Sewer Line Segments - Atwood Avenue	8,889.90	65	8,069.29	136.77	8,206.06	683.84
110	550	Infrastrucutre	110-000-1620-000	110-000-1680-010	Sewer Line Segments - Reade Lane	9,177.00	65	8,329.89	141.18	8,471.08	705.92
110	550	Infrastrucutre	110-000-1620-000	110-000-1680-010	Sewer Line Segments - Cazneau Avenue	9,232.30	65	8,380.09	142.04	8,522.12	710.18
110	550	Infrastrucutre	110-000-1620-000	110-000-1680-010	Sewer Line Segments - Pine Street	9,252.95	65	8,398.83	142.35	8,541.18	711.77
110	550	Infrastrucutre	110-000-1620-000	110-000-1680-010	Sewer Line Segments - Pine Street	9,290.40	65	8,432.82	142.93	8,575.75	714.65
110	550	Infrastrucutre	110-000-1620-000	110-000-1680-010	Sewer Line Segments - Caledonia Street	9,427.60	65	8,557.36	145.04	8,702.40	725.20
110	550	Infrastrucutre	110-000-1620-000	110-000-1680-010	Sewer Line Segments - Glen Drive	9,520.70	65	8,641.87	146.47	8,788.34	732.36
110	550	Infrastrucutre	110-000-1620-000	110-000-1680-010	Sewer Line Segments - Humboldt Avenue	9,565.50	65	8,682.53	147.16	8,829.69	735.81
110	550	Infrastrucutre	110-000-1620-000	110-000-1680-010	Sewer Line Segments - Gordon Street	9,797.55	65	8,893.16	150.73	9,043.89	753.66
110	550	Infrastrucutre	110-000-1620-000	110-000-1680-010	Sewer Line Segments - Santa Rosa Avenue	9,801.05	65	8,896.34	150.79	9,047.12	753.93
110	550	Infrastrucutre	110-000-1620-000	110-000-1680-010	Sewer Line Segments - Humboldt Avenue	9,878.75	65	8,966.87	151.98	9,118.85	759.90
110	550	Infrastrucutre	110-000-1620-000	110-000-1680-010	Sewer Line Segments - Spring Street	10,049.90	65	9,122.22	154.61	9,276.83	773.07
110	550	Infrastrucutre	110-000-1620-000	110-000-1680-010	Sewer Line Segments - Bulkley Avenue	10,124.80	65	9,190.20	155.77	9,345.97	778.83
110	550	Infrastrucutre	110-000-1620-000	110-000-1680-010	Sewer Line Segments - Santa Rosa Avenue	10,128.65	65	9,193.70	155.83	9,349.52	779.13
110	550	Infrastrucutre	110-000-1620-000	110-000-1680-010	Sewer Line Segments - Glen Court	10,143.70	65	9,207.36	156.06	9,363.42	780.28
110	550	Infrastrucutre	110-000-1620-000	110-000-1680-010	Sewer Line Segments - Bulkley Avenue	10,255.00	65	9,308.38	157.77	9,466.15	788.85
110	550	Infrastrucutre	110-000-1620-000	110-000-1680-010	Sewer Line Segments - Josephine Street	10,258.50	65	9,311.56	157.82	9,469.38	789.12
110	550	Infrastrucutre	110-000-1620-000	110-000-1680-010	Sewer Line Segments - Glen Court	10,367.35	65	9,410.36	159.50	9,569.86	797.49
110	550	Infrastrucutre	110-000-1620-000	110-000-1680-010	Sewer Line Segments - Bridgeway	10,375.75	65	9,417.99	159.63	9,577.62	798.13
110	550	Infrastrucutre	110-000-1620-000	110-000-1680-010	Sewer Line Segments - Turney Street	10,391.50	65	9,432.28	159.87	9,592.15	799.35
110	550	Infrastrucutre	110-000-1620-000	110-000-1680-010	Sewer Line Segments - Caledonia Street	10,497.20	65	9,528.23	161.50	9,689.72	807.48
110	550	Infrastrucutre	110-000-1620-000	110-000-1680-010	Sewer Line Segments - Caledonia Street	10,497.20	65	9,528.23	161.50	9,689.72	807.48
110	550	Infrastrucutre	110-000-1620-000	110-000-1680-010	Sewer Line Segments - Caledonia Street	10,505.95	65	9,536.17	161.63	9,697.80	808.15
110	550	Infrastrucutre	110-000-1620-000	110-000-1680-010	Sewer Line Segments - Caledonia Street	10,505.95	65	9,536.17	161.63	9,697.80	808.15
110	550	Infrastrucutre	110-000-1620-000	110-000-1680-010	Sewer Line Segments - Litho Street	10,511.20	65	9,540.94	161.71	9,702.65	808.55
110	550	Infrastrucutre	110-000-1620-000	110-000-1680-010	Sewer Line Segments - Caledonia Street	10,534.65	65	9,562.22	162.07	9,724.29	810.36
110	550	Infrastrucutre	110-000-1620-000	110-000-1680-010	Sewer Line Segments - Humboldt Avenue	11,176.90	65	10,145.19	171.95	10,317.14	859.76
110	550	Infrastrucutre	110-000-1620-000	110-000-1680-010	Sewer Line Segments - Prospect Avenue	11,235.00	65	10,197.92	172.85	10,370.77	864.23
110	550	Infrastrucutre	110-000-1620-000	110-000-1680-010	Sewer Line Segments - Glen Drive	11,317.60	65	10,272.90	174.12	10,447.02	870.58
110	550	Infrastrucutre	110-000-1620-000	110-000-1680-010	Sewer Line Segments - Harrison Avenue	11,681.95	65	10,603.62	179.72	10,783.34	898.61
110	550	Infrastrucutre	110-000-1620-000	110-000-1680-010	Sewer Line Segments - Spencer Avenue	11,739.70	65	10,656.04	180.61	10,836.65	903.05
110	550	Infrastrucutre	110-000-1620-000	110-000-1680-010	Sewer Line Segments - Spencer Avenue	11,824.05	65	10,732.60	181.91	10,914.51	909.54
110	550	Infrastrucutre	110-000-1620-000	110-000-1680-010	Sewer Line Segments - Litho Street	11,854.85	65	10,760.56	182.38	10,942.94	911.91
110	550	Infrastrucutre	110-000-1620-000	110-000-1680-010	Sewer Line Segments - Glen Drive	11,884.60	65	10,787.56	182.84	10,970.40	914.20
110	550	Infrastrucutre	110-000-1620-000	110-000-1680-010	Sewer Line Segments - Napa Street	11,884.95	65	10,787.88	182.85	10,970.72	914.23
110	550	Infrastrucutre	110-000-1620-000	110-000-1680-010	Sewer Line Segments - Harrison Avenue	11,981.90	65	10,875.88	184.34	11,060.22	921.68
110	550	Infrastrucutre	110-000-1620-000	110-000-1680-010	Sewer Line Segments - Spencer Avenue	12,390.35	65	11,246.63	190.62	11,437.25	953.10
110	550	Infrastrucutre	110-000-1620-000	110-000-1680-010	Sewer Line Segments - Caledonia Street	12,488.35	65	11,335.58	192.13	11,527.71	960.64
110	550	Infrastrucutre	110-000-1620-000	110-000-1680-010	Sewer Line Segments - Cloudview Road	12,916.40	65	11,724.12	198.71	11,922.83	993.57
110	550	Infrastrucutre	110-000-1620-000	110-000-1680-010	Sewer Line Segments - Spencer Avenue	13,549.90	65	12,299.14	208.46	13,507.60	1,042.30
110	550	Infrastrucutre	110-000-1620-000	110-000-1680-010	Sewer Line Segments - Cloudview Road	13,739.60	65	12,471.33	211.38	13,682.71	1,056.89
110	550	Infrastrucutre	110-000-1620-000	110-000-1680-010	Sewer Line Segments - Cazneau Avenue	13,887.65	65	12,605.71	213.66	13,819.37	1,068.28
110	550	Infrastrucutre	110-000-1620-000	110-000-1680-010	Sewer Line Segments - Spencer Avenue	14,054.25	65	12,756.93	216.22	14,973.15	1,081.10
110	550	Infrastrucutre	110-000-1620-000	110-000-1680-010	Sewer Line Segments - Filbert Avenue	14,422.80	65	13,091.46	221.89	15,313.35	1,109.45

110	550	Infrastrucutre	110-000-1620-000	110-000-1680-010	Sewer Line Segments - Santa Rosa Avenue	14,805.70	65	13,439.02	227.78	13,666.80	1,138.90
110	550	Infrastrucutre	110-000-1620-000	110-000-1680-010	Sewer Line Segments - Cloudview Road	15,033.55	65	13,645.84	231.29	13,877.12	1,156.43
110	550	Infrastrucutre	110-000-1620-000	110-000-1680-010	Sewer Line Segments - Bee Street	15,050.70	65	13,661.40	231.55	13,892.95	1,157.75
110	550	Infrastrucutre	110-000-1620-000	110-000-1680-010	Sewer Line Segments - Harrison Avenue	15,465.80	65	14,038.19	237.94	14,276.12	1,189.68
110	550	Infrastrucutre	110-000-1620-000	110-000-1680-010	Sewer Line Segments - Turney Street	16,002.35	65	14,525.21	246.19	14,771.40	1,230.95
110	550	Infrastrucutre	110-000-1620-000	110-000-1680-010	Sewer Line Segments - Pine Street	16,100.00	65	14,613.85	247.69	14,861.54	1,238.46
110	550	Infrastrucutre	110-000-1620-000	110-000-1680-010	Sewer Line Segments - Spring Street	16,108.40	65	14,621.47	247.82	14,869.29	1,239.11
110	550	Infrastrucutre	110-000-1620-000	110-000-1680-010	Sewer Line Segments - Litho Street	16,486.75	65	14,964.90	253.64	15,218.54	1,268.21
110	550	Infrastrucutre	110-000-1620-000	110-000-1680-010	Sewer Line Segments - San Carlos Avenue	23,839.20	65	21,638.66	366.76	22,005.42	1,833.78
110	550	Infrastrucutre	110-000-1620-000	110-000-1680-010	Sewer Line Segments - Johnson Street	28,281.40	65	25,670.81	435.10	26,105.91	2,175.49
110	550	Equipment	110-000-1650-000	110-000-1680-040	Whiskey Spring Pump Station	200,000.00	30	200,000.00	-	200,000.00	-
110	550	Infrastrucutre	110-000-1620-000	110-000-1680-010	Sewer Line Segments - Currey Avenue	1,220.50	65	1,013.95	18.78	1,032.73	187.77
110	550	Infrastrucutre	110-000-1620-000	110-000-1680-010	Sewer Line Segments - Easterby Street	1,360.00	65	1,129.85	20.92	1,150.77	209.23
110	550	Infrastrucutre	110-000-1620-000	110-000-1680-010	Sewer Line Segments - Wray Avenue	1,544.50	65	1,283.12	23.76	1,306.88	237.62
110	550	Infrastrucutre	110-000-1620-000	110-000-1680-010	Sewer Line Segments - Marin Avenue R/W	2,200.50	65	1,828.11	33.85	1,861.96	338.54
110	550	Infrastrucutre	110-000-1620-000	110-000-1680-010	Sewer Line Segments - Kendall Court	2,454.50	65	2,039.12	37.76	2,076.88	377.62
110	550	Infrastrucutre	110-000-1620-000	110-000-1680-010	Sewer Line Segments - Santa Rosa Avenue	2,650.50	65	2,201.95	40.78	2,242.73	407.77
110	550	Infrastrucutre	110-000-1620-000	110-000-1680-010	Sewer Line Segments - Vista Clara Road	2,650.50	65	2,201.95	40.78	2,242.73	407.77
110	550	Infrastrucutre	110-000-1620-000	110-000-1680-010	Sewer Line Segments - 100 Ebttide Avenue	2,915.50	65	2,422.11	44.85	2,466.96	448.54
110	550	Infrastrucutre	110-000-1620-000	110-000-1680-010	SEWER MANHOLE - Libertyship Way	3,000.00	65	2,492.31	46.15	2,538.46	461.54
110	550	Infrastrucutre	110-000-1620-000	110-000-1680-010	SEWER MANHOLE - Libertyship Way	3,000.00	65	2,492.31	46.15	2,538.46	461.54
110	550	Infrastrucutre	110-000-1620-000	110-000-1680-010	SEWER MANHOLE - Libertyship Way	3,000.00	65	2,492.31	46.15	2,538.46	461.54
110	550	Infrastrucutre	110-000-1620-000	110-000-1680-010	SEWER MANHOLE - Libertyship Way	3,000.00	65	2,492.31	46.15	2,538.46	461.54
110	550	Infrastrucutre	110-000-1620-000	110-000-1680-010	SEWER MANHOLE - Libertyship Way	3,000.00	65	2,492.31	46.15	2,538.46	461.54
110	550	Infrastrucutre	110-000-1620-000	110-000-1680-010	SEWER MANHOLE - Libertyship Way	3,000.00	65	2,492.31	46.15	2,538.46	461.54
110	550	Infrastrucutre	110-000-1620-000	110-000-1680-010	SEWER MANHOLE - Libertyship Way	3,000.00	65	2,492.31	46.15	2,538.46	461.54
110	550	Infrastrucutre	110-000-1620-000	110-000-1680-010	SEWER MANHOLE - Libertyship Way	3,000.00	65	2,492.31	46.15	2,538.46	461.54
110	550	Infrastrucutre	110-000-1620-000	110-000-1680-010	SEWER MANHOLE - Toyon Lane	3,000.00	65	2,492.31	46.15	2,538.46	461.54
110	550	Infrastrucutre	110-000-1620-000	110-000-1680-010	SEWER MANHOLE - Toyon Lane	3,000.00	65	2,492.31	46.15	2,538.46	461.54
110	550	Infrastrucutre	110-000-1620-000	110-000-1680-010	SEWER MANHOLE - Toyon Lane	3,000.00	65	2,492.31	46.15	2,538.46	461.54
110	550	Infrastrucutre	110-000-1620-000	110-000-1680-010	SEWER MANHOLE - Toyon Lane	3,000.00	65	2,492.31	46.15	2,538.46	461.54
110	550	Infrastrucutre	110-000-1620-000	110-000-1680-010	SEWER MANHOLE - Toyon Lane	3,000.00	65	2,492.31	46.15	2,538.46	461.54
110	550	Infrastrucutre	110-000-1620-000	110-000-1680-010	SEWER MANHOLE - Toyon Lane	3,000.00	65	2,492.31	46.15	2,538.46	461.54
110	550	Infrastrucutre	110-000-1620-000	110-000-1680-010	SEWER MANHOLE - Currey Lane	3,000.00	65	2,492.31	46.15	2,538.46	461.54
110	550	Infrastrucutre	110-000-1620-000	110-000-1680-010	SEWER MANHOLE - Currey Lane	3,000.00	65	2,492.31	46.15	2,538.46	461.54
110	550	Infrastrucutre	110-000-1620-000	110-000-1680-010	SEWER MANHOLE - Currey Lane	3,000.00	65	2,492.31	46.15	2,538.46	461.54
110	550	Infrastrucutre	110-000-1620-000	110-000-1680-010	SEWER MANHOLE - Currey Lane	3,000.00	65	2,492.31	46.15	2,538.46	461.54
110	550	Infrastrucutre	110-000-1620-000	110-000-1680-010	SEWER MANHOLE - Currey Lane	3,000.00	65	2,492.31	46.15	2,538.46	461.54
110	550	Infrastrucutre	110-000-1620-000	110-000-1680-010	SEWER MANHOLE - Rodeo Avenue	3,000.00	65	2,492.31	46.15	2,538.46	461.54
110	550	Infrastrucutre	110-000-1620-000	110-000-1680-010	SEWER MANHOLE - Woodward Avenue	3,000.00	65	2,492.31	46.15	2,538.46	461.54
110	550	Infrastrucutre	110-000-1620-000	110-000-1680-010	SEWER MANHOLE - Woodward Avenue	3,000.00	65	2,492.31	46.15	2,538.46	461.54
110	550	Infrastrucutre	110-000-1620-000	110-000-1680-010	SEWER MANHOLE - Rodeo Avenue	3,000.00	65	2,492.31	46.15	2,538.46	461.54
110	550	Infrastrucutre	110-000-1620-000	110-000-1680-010	SEWER MANHOLE - Currey Avenue	3,000.00	65	2,492.31	46.15	2,538.46	461.54
110	550	Infrastrucutre	110-000-1620-000	110-000-1680-010	SEWER MANHOLE - Vista Clara Road	3,000.00	65	2,492.31	46.15	2,538.46	461.54
110	550	Infrastrucutre	110-000-1620-000	110-000-1680-010	SEWER MANHOLE - Currey Avenue	3,000.00	65	2,492.31	46.15	2,538.46	461.54
110	550	Infrastrucutre	110-000-1620-000	110-000-1680-010	SEWER MANHOLE - Currey Avenue	3,000.00	65	2,492.31	46.15	2,538.46	461.54
110	550	Infrastrucutre	110-000-1620-000	110-000-1680-010	SEWER MANHOLE - Currey Avenue	3,000.00	65	2,492.31	46.15	2,538.46	461.54
110	550	Infrastrucutre	110-000-1620-000	110-000-1680-010	SEWER MANHOLE - Currey Avenue	3,000.00	65	2,492.31	46.15	2,538.46	461.54
110	550	Infrastrucutre	110-000-1620-000	110-000-1680-010	SEWER MANHOLE - Crecienta Drive	3,000.00	65	2,492.31	46.15	2,538.46	461.54
110	550	Infrastrucutre	110-000-1620-000	110-000-1680-010	SEWER MANHOLE - Platt Avenue	3,000.00	65	2,492.31	46.15	2,538.46	461.54
110	550	Infrastrucutre	110-000-1620-000	110-000-1680-010	SEWER MANHOLE - Platt Avenue	3,000.00	65	2,492.31	46.15	2,538.46	461.54
110	550	Infrastrucutre	110-000-1620-000	110-000-1680-010	SEWER MANHOLE - Platt Avenue	3,000.00	65	2,492.31	46.15	2,538.46	461.54
110	550	Infrastrucutre	110-000-1620-000	110-000-1680-010	SEWER MANHOLE - Platt Avenue	3,000.00	65	2,492.31	46.15	2,538.46	461.54
110	550	Infrastrucutre	110-000-1620-000	110-000-1680-010	SEWER MANHOLE - Platt Avenue R/W	3,000.00	65	2,492.31	46.15	2,538.46	461.54
110	550	Infrastrucutre	110-000-1620-000	110-000-1680-010	SEWER MANHOLE - Spring Street	3,000.00	65	2,492.31	46.15	2,538.46	461.54
110	550	Infrastrucutre	110-000-1620-000	110-000-1680-010	SEWER MANHOLE - Pearl Street	3,000.00	65	2,492.31	46.15	2,538.46	461.54
110	550	Infrastrucutre	110-000-1620-000	110-000-1680-010	SEWER MANHOLE - Pearl Street	3,000.00	65	2,492.31	46.15	2,538.46	461.54
110	550	Infrastrucutre	110-000-1620-000	110-000-1680-010	SEWER MANHOLE - Spring Street	3,000.00	65	2,492.31	46.15	2,538.46	461.54
110	550	Infrastrucutre	110-000-1620-000	110-000-1680-010	SEWER MANHOLE - Toyon Court	3,000.00	65	2,492.31	46.15	2,538.46	461.54

110	550	Infrastrucutre	110-000-1620-000	110-000-1680-010	Sewer Line Segments - Lincoln Avenue	3,669.00	65	3,048.09	56.45	3,104.54	564.46
110	550	Infrastrucutre	110-000-1620-000	110-000-1680-010	Sewer Line Segments - Linclon Avenue	3,800.00	65	3,156.92	58.46	3,215.38	584.62
110	550	Infrastrucutre	110-000-1620-000	110-000-1680-010	Sewer Line Segments - Woodward Avenue R/W	3,920.50	65	3,257.03	60.32	3,317.35	603.15
110	550	Infrastrucutre	110-000-1620-000	110-000-1680-010	Sewer Line Segments - Kendall Court	4,020.50	65	3,340.11	61.85	3,401.96	618.54
110	550	Infrastrucutre	110-000-1620-000	110-000-1680-010	Sewer Line Segments - Woodward Avenue R/W	4,167.50	65	3,462.23	64.12	3,526.35	641.15
110	550	Infrastrucutre	110-000-1620-000	110-000-1680-010	Sewer Line Segments - 100 Ebbtide Avenue	4,186.50	65	3,478.02	64.41	3,542.42	644.08
110	550	Infrastrucutre	110-000-1620-000	110-000-1680-010	Sewer Line Segments - Nevada Street	4,302.50	65	3,574.38	66.19	3,640.58	661.92
110	550	Infrastrucutre	110-000-1620-000	110-000-1680-010	Sewer Line Segments - Marin Avenue	4,450.50	65	3,697.34	68.47	3,765.81	684.69
110	550	Infrastrucutre	110-000-1620-000	110-000-1680-010	Sewer Line Segments - Nevada Street	4,621.00	65	3,838.98	71.09	3,910.08	710.92
110	550	Infrastrucutre	110-000-1620-000	110-000-1680-010	Sewer Line Segments - 100 Ebbtide Avenue	4,650.00	65	3,863.08	71.54	3,934.62	715.38
110	550	Infrastrucutre	110-000-1620-000	110-000-1680-010	Sewer Line Segments - Marin Avenue R/W	4,701.00	65	3,905.45	72.32	3,977.77	723.23
110	550	Infrastrucutre	110-000-1620-000	110-000-1680-010	Sewer Line Segments - Woodward Avenue R/W	4,837.50	65	4,018.85	74.42	4,093.27	744.23
110	550	Infrastrucutre	110-000-1620-000	110-000-1680-010	Sewer Line Segments - Linclon Avenue	4,968.00	65	4,127.26	76.43	4,203.69	764.31
110	550	Infrastrucutre	110-000-1620-000	110-000-1680-010	Sewer Line Segments - Ebbtide Avenue	5,053.50	65	4,198.29	77.75	4,276.04	777.46
110	550	Infrastrucutre	110-000-1620-000	110-000-1680-010	Sewer Line Segments - Linclon Avenue	5,099.00	65	4,236.09	78.45	4,314.54	784.46
110	550	Infrastrucutre	110-000-1620-000	110-000-1680-010	Sewer Line Segments - Nevada Street	5,161.50	65	4,288.02	79.41	4,367.42	794.08
110	550	Infrastrucutre	110-000-1620-000	110-000-1680-010	Sewer Line Segments - Currey Avenue R/W	5,222.50	65	4,587.92	84.96	4,672.88	849.62
110	550	Infrastrucutre	110-000-1620-000	110-000-1680-010	Sewer Line Segments - Vista Clara Road	5,591.50	65	4,645.25	86.02	4,731.27	860.23
110	550	Infrastrucutre	110-000-1620-000	110-000-1680-010	Sewer Line Segments - Miller Avenue	5,724.50	65	4,755.74	88.07	4,843.81	880.69
110	550	Infrastrucutre	110-000-1620-000	110-000-1680-010	Sewer Line Segments - Ebbtide Avenue R/W	5,776.00	65	4,798.52	88.86	4,887.38	888.62
110	550	Infrastrucutre	110-000-1620-000	110-000-1680-010	Sewer Line Segments - Ebbtide Avenue R/W	5,809.00	65	4,825.94	89.37	4,915.31	893.69
110	550	Infrastrucutre	110-000-1620-000	110-000-1680-010	Sewer Line Segments - Wray Avenue	5,819.50	65	4,834.66	89.53	4,924.19	895.31
110	550	Infrastrucutre	110-000-1620-000	110-000-1680-010	Sewer Line Segments - Monte Mar Drive	6,001.50	65	4,985.86	92.33	5,078.19	923.31
110	550	Infrastrucutre	110-000-1620-000	110-000-1680-010	Sewer Line Segments - Santa Rosa Avenue	6,018.50	65	4,999.98	92.59	5,092.58	925.92
110	550	Infrastrucutre	110-000-1620-000	110-000-1680-010	Sewer Line Segments - Marin Avenue R/W	6,021.00	65	5,002.06	92.63	5,094.69	926.31
110	550	Infrastrucutre	110-000-1620-000	110-000-1680-010	Sewer Line Segments - Linclon Avenue	6,151.50	65	5,110.48	94.64	5,205.12	946.38
110	550	Infrastrucutre	110-000-1620-000	110-000-1680-010	Sewer Line Segments - Santa Rosa Avenue	6,232.50	65	5,177.77	95.88	5,273.65	958.85
110	550	Infrastrucutre	110-000-1620-000	110-000-1680-010	Sewer Line Segments - Woodward Avenue R/W	6,251.50	65	5,193.55	96.18	5,289.73	961.77
110	550	Infrastrucutre	110-000-1620-000	110-000-1680-010	Sewer Line Segments - Nevada Street 2R/W	6,459.50	65	5,366.35	99.38	5,465.73	993.77
110	550	Infrastrucutre	110-000-1620-000	110-000-1680-010	Sewer Line Segments - Linclon Avenue	6,473.50	65	5,377.98	99.59	5,477.58	995.92
110	550	Infrastrucutre	110-000-1620-000	110-000-1680-010	Sewer Line Segments - Miller Avenue	6,488.50	65	5,390.45	99.82	5,490.27	998.23
110	550	Infrastrucutre	110-000-1620-000	110-000-1680-010	Sewer Line Segments - Locust Street	6,546.00	65	5,438.22	100.71	5,538.92	1,007.08
110	550	Infrastrucutre	110-000-1620-000	110-000-1680-010	Sewer Line Segments - Rodeo Drive	6,684.50	65	5,553.28	102.84	5,656.12	1,028.38
110	550	Infrastrucutre	110-000-1620-000	110-000-1680-010	Sewer Line Segments - Linclon Avenue	6,809.50	65	5,657.12	104.76	5,761.88	1,047.62
110	550	Infrastrucutre	110-000-1620-000	110-000-1680-010	Sewer Line Segments - Monte Mar Drive R/W	6,830.50	65	5,674.57	105.08	5,779.65	1,050.85
110	550	Infrastrucutre	110-000-1620-000	110-000-1680-010	Sewer Line Segments - Woodward Avenue R/W	7,004.50	65	5,819.12	107.76	5,926.88	1,077.62
110	550	Infrastrucutre	110-000-1620-000	110-000-1680-010	Sewer Line Segments - Marin Avenue	7,145.00	65	5,935.85	109.92	6,045.77	1,099.23
110	550	Infrastrucutre	110-000-1620-000	110-000-1680-010	Sewer Line Segments - Testa Street	7,434.00	65	6,175.94	114.37	6,290.31	1,143.69
110	550	Infrastrucutre	110-000-1620-000	110-000-1680-010	Sewer Line Segments - Edwards Avenue	7,694.00	65	6,391.94	118.37	6,510.31	1,183.69
110	550	Infrastrucutre	110-000-1620-000	110-000-1680-010	Sewer Line Segments - Linclon Avenue R/W	7,746.50	65	6,435.55	119.18	6,554.73	1,191.77
110	550	Infrastrucutre	110-000-1620-000	110-000-1680-010	Sewer Line Segments - Edwards Avenue	7,808.00	65	6,486.65	120.12	6,606.77	1,201.23
110	550	Infrastrucutre	110-000-1620-000	110-000-1680-010	Sewer Line Segments - Kendall Court	7,957.50	65	6,610.85	122.42	6,733.27	1,224.23
110	550	Infrastrucutre	110-000-1620-000	110-000-1680-010	Sewer Line Segments - Nevada Street	8,131.50	65	6,755.40	125.10	6,880.50	1,251.00
110	550	Infrastrucutre	110-000-1620-000	110-000-1680-010	Sewer Line Segments - Edwards Avenue	8,161.50	65	6,780.32	125.56	6,905.88	1,255.62
110	550	Infrastrucutre	110-000-1620-000	110-000-1680-010	Sewer Line Segments - Rodeo Drive	8,253.00	65	6,856.34	126.97	6,983.31	1,269.69
110	550	Infrastrucutre	110-000-1620-000	110-000-1680-010	Sewer Line Segments - Glen Drive	8,302.50	65	6,897.46	127.73	7,025.19	1,277.31
110	550	Infrastrucutre	110-000-1620-000	110-000-1680-010	Sewer Line Segments - George Lane	8,393.50	65	6,973.06	129.13	7,102.19	1,291.31
110	550	Infrastrucutre	110-000-1620-000	110-000-1680-010	Sewer Line Segments - Marin Avenue	8,583.00	65	7,130.49	132.05	7,262.54	1,320.46
110	550	Infrastrucutre	110-000-1620-000	110-000-1680-010	Sewer Line Segments - Crecienta Lane	8,800.50	65	7,311.18	135.39	7,446.58	1,353.92
110	550	Infrastrucutre	110-000-1620-000	110-000-1680-010	Sewer Line Segments - Nevada Street	9,231.00	65	7,668.83	142.02	7,810.85	1,420.15
110	550	Infrastrucutre	110-000-1620-000	110-000-1680-010	Sewer Line Segments - Miller Avenue	9,285.50	65	7,714.11	142.85	7,856.96	1,428.54
110	550	Infrastrucutre	110-000-1620-000	110-000-1680-010	Sewer Line Segments - Edwards Avenue	9,376.00	65	7,789.29	144.25	7,933.54	1,442.46
110	550	Infrastrucutre	110-000-1620-000	110-000-1680-010	Sewer Line Segments - Santa Rosa Avenue	9,386.00	65	7,797.60	144.40	7,942.00	1,444.00
110	550	Infrastrucutre	110-000-1620-000	110-000-1680-010	Sewer Line Segments - Nevada Street	9,475.00	65	7,871.54	145.77	8,017.31	1,457.69
110	550	Infrastrucutre	110-000-1620-000	110-000-1680-010	Sewer Line Segments - Marin Avenue	9,480.50	65	7,876.11	145.85	8,021.96	1,458.54
110	550	Infrastrucutre	110-000-1620-000	110-000-1680-010	Sewer Line Segments - Santa Rosa Avenue	9,550.50	65	7,934.26	146.93	8,081.19	1,469.31
110	550	Infrastrucutre	110-000-1620-000	110-000-1680-010	Sewer Line Segments - Wray Avenue	9,704.50	65	8,062.20	149.30	8,211.50	1,493.00
110	550	Infrastrucutre	110-000-1620-000	110-000-1680-010	Sewer Line Segments - George Lane	9,862.50	65	8,193.46	151.73	8,345.19	1,517.31
110	550	Infrastrucutre	110-000-1620-000	110-000-1680-010	Sewer Line Segments - Monte Mar Drive	9,892.50	65	8,218.38	152.19	8,370.58	1,521.92

110	550	Infrastrucutre	110-000-1620-000	110-000-1680-010	Sewer Line Segments - Monte Mar Drive	10,128.00	65	8,414.03	155.82	8,569.85	1,558.15
110	550	Infrastrucutre	110-000-1620-000	110-000-1680-010	Sewer Line Segments - Edwards Avenue	10,347.50	65	8,596.38	159.19	8,755.58	1,591.92
110	550	Infrastrucutre	110-000-1620-000	110-000-1680-010	Sewer Line Segments - George Lane	10,754.00	65	8,934.09	165.45	9,099.54	1,654.46
110	550	Infrastrucutre	110-000-1620-000	110-000-1680-010	Sewer Line Segments - Currey Avenue	10,941.50	65	9,089.86	168.33	9,258.19	1,683.31
110	550	Infrastrucutre	110-000-1620-000	110-000-1680-010	Sewer Line Segments - George Lane	11,151.00	65	9,263.91	171.55	9,435.46	1,715.54
110	550	Infrastrucutre	110-000-1620-000	110-000-1680-010	Sewer Line Segments - Ebbitide Avenue	11,166.00	65	9,276.37	171.78	9,448.15	1,717.85
110	550	Infrastrucutre	110-000-1620-000	110-000-1680-010	Sewer Line Segments - Linclon Avenue	11,205.50	65	9,309.18	172.39	9,481.58	1,723.92
110	550	Infrastrucutre	110-000-1620-000	110-000-1680-010	Sewer Line Segments - George Lane	11,282.00	65	9,372.74	173.57	9,546.31	1,735.69
110	550	Infrastrucutre	110-000-1620-000	110-000-1680-010	Sewer Line Segments - Linclon Avenue R/W	11,413.50	65	9,481.98	175.59	9,657.58	1,755.92
110	550	Infrastrucutre	110-000-1620-000	110-000-1680-010	Sewer Line Segments - Linclon Avenue R/W	11,581.00	65	9,621.14	178.17	9,799.31	1,781.69
110	550	Infrastrucutre	110-000-1620-000	110-000-1680-010	Sewer Line Segments - Glen Drive	11,780.50	65	9,786.88	181.24	9,968.12	1,812.38
110	550	Infrastrucutre	110-000-1620-000	110-000-1680-010	Sewer Line Segments - Arana Circle	11,840.50	65	9,836.72	182.16	10,018.88	1,821.62
110	550	Infrastrucutre	110-000-1620-000	110-000-1680-010	Sewer Line Segments - George Lane	12,031.00	65	9,994.98	185.09	10,180.08	1,850.92
110	550	Infrastrucutre	110-000-1620-000	110-000-1680-010	Sewer Line Segments - Wray Avenue R/W	12,100.00	65	10,052.31	186.15	10,238.46	1,861.54
110	550	Infrastrucutre	110-000-1620-000	110-000-1680-010	Sewer Line Segments - Marin Avenue	12,151.00	65	10,094.68	186.94	10,281.62	1,869.38
110	550	Infrastrucutre	110-000-1620-000	110-000-1680-010	Sewer Line Segments - Monte Mar Drive	12,176.50	65	10,115.86	187.33	10,303.19	1,873.31
110	550	Infrastrucutre	110-000-1620-000	110-000-1680-010	Sewer Line Segments - Ebbitide Avenue	12,220.00	65	10,152.00	188.00	10,340.00	1,880.00
110	550	Infrastrucutre	110-000-1620-000	110-000-1680-010	Sewer Line Segments - Arana Circle	12,414.00	65	10,313.17	190.98	10,504.15	1,909.85
110	550	Infrastrucutre	110-000-1620-000	110-000-1680-010	Sewer Line Segments - Linclon Avenue R/W	12,490.00	65	10,376.31	192.15	10,568.46	1,921.54
110	550	Infrastrucutre	110-000-1620-000	110-000-1680-010	Sewer Line Segments - Crecienta Avenue	13,104.50	65	10,886.82	201.61	11,088.42	2,016.08
110	550	Infrastrucutre	110-000-1620-000	110-000-1680-010	Sewer Line Segments - Nevada Street	13,131.00	65	10,908.83	202.02	11,110.85	2,020.15
110	550	Infrastrucutre	110-000-1620-000	110-000-1680-010	Sewer Line Segments - Linclon Avenue R/W	13,868.50	65	11,521.52	213.36	11,734.88	2,133.62
110	550	Infrastrucutre	110-000-1620-000	110-000-1680-010	Sewer Line Segments - Edwards Avenue	13,970.00	65	11,605.85	214.92	11,820.77	2,149.23
110	550	Infrastrucutre	110-000-1620-000	110-000-1680-010	Sewer Line Segments - Nevada Street	14,013.50	65	11,641.98	215.59	11,857.58	2,155.92
110	550	Infrastrucutre	110-000-1620-000	110-000-1680-010	Sewer Line Segments - Nevada Street	14,213.50	65	11,808.14	218.67	12,026.81	2,186.69
110	550	Infrastrucutre	110-000-1620-000	110-000-1680-010	Sewer Line Segments - Crecienta Lane R/W	14,537.50	65	12,077.31	223.65	12,300.96	2,236.54
110	550	Infrastrucutre	110-000-1620-000	110-000-1680-010	Sewer Line Segments - Currey Avenue	14,648.50	65	12,169.52	225.36	12,394.88	2,253.62
110	550	Infrastrucutre	110-000-1620-000	110-000-1680-010	Sewer Line Segments - Marie Street	15,001.00	65	12,462.37	230.78	12,693.15	2,307.85
110	550	Infrastrucutre	110-000-1620-000	110-000-1680-010	Sewer Line Segments - Monte Mar Drive	15,259.50	65	12,677.12	234.76	12,911.88	2,347.62
110	550	Infrastrucutre	110-000-1620-000	110-000-1680-010	Sewer Line Segments - Ebbitide Avenue	15,457.00	65	12,841.20	237.80	13,079.00	2,378.00
110	550	Infrastrucutre	110-000-1620-000	110-000-1680-010	Sewer Line Segments - Marin Avenue	15,809.00	65	13,133.63	243.22	13,376.85	2,432.15
110	550	Infrastrucutre	110-000-1620-000	110-000-1680-010	Sewer Line Segments - Ebbitide Avenue	16,063.50	65	13,345.06	247.13	13,592.19	2,471.31
110	550	Infrastrucutre	110-000-1620-000	110-000-1680-010	Sewer Line Segments - Alexander Avenue	16,226.50	65	13,480.48	249.64	13,730.12	2,496.38
110	550	Infrastrucutre	110-000-1620-000	110-000-1680-010	Sewer Line Segments - Lincoln Avenue R/W	16,966.50	65	14,095.25	261.02	14,356.27	2,610.23
110	550	Infrastrucutre	110-000-1620-000	110-000-1680-010	Sewer Line Segments - Marie Street	17,462.00	65	14,506.89	268.65	14,775.54	2,686.46
110	550	Infrastrucutre	110-000-1620-000	110-000-1680-010	Sewer Line Segments - Olive Street	19,932.00	65	16,558.89	306.65	16,865.54	3,066.46
110	550	Infrastrucutre	110-000-1620-000	110-000-1680-010	Sewer Line Segments - Easterby Street	22,980.50	65	19,091.49	353.55	19,445.04	3,535.46
110	550	Infrastrucutre	110-000-1620-000	110-000-1680-010	Sewer Line Segments - Locust Street	23,000.00	65	19,107.69	353.85	19,461.54	3,538.46
110	550	Infrastrucutre	110-000-1620-000	110-000-1680-010	Sewer Line Segments - Locust Road	23,936.00	65	19,885.29	368.25	20,253.54	3,682.46
110	550	Infrastrucutre	110-000-1620-000	110-000-1680-010	Sewer Line Segments - Tomales Street R/W	1,360.00	65	1,025.23	20.92	1,046.15	313.85
110	550	Infrastrucutre	110-000-1620-000	110-000-1680-010	Sewer Line Segments - Tomales Street	1,421.00	65	1,071.22	21.86	1,093.08	327.92
110	550	Infrastrucutre	110-000-1620-000	110-000-1680-010	Sewer Line Segments - Marinship Way	2,408.00	65	1,815.26	37.05	1,852.31	555.69
110	550	Infrastrucutre	110-000-1620-000	110-000-1680-010	Sewer Line Segments - Coloma Street	2,843.00	65	2,143.18	43.74	2,186.92	656.08
110	550	Infrastrucutre	110-000-1620-000	110-000-1680-010	Sewer Line Segments - Gate 5 Road	3,041.00	65	2,292.45	46.78	2,339.23	701.77
110	550	Infrastrucutre	110-000-1620-000	110-000-1680-010	Sewer Line Segments - Harbor Drive	3,466.00	65	2,612.83	53.32	2,666.15	799.85
110	550	Infrastrucutre	110-000-1620-000	110-000-1680-010	Sewer Line Segments - Coloma Street	3,672.00	65	2,768.12	56.49	2,824.62	847.38
110	550	Infrastrucutre	110-000-1620-000	110-000-1680-010	Sewer Line Segments - Tomales Street R/W	4,115.00	65	3,102.08	63.31	3,165.38	949.62
110	550	Infrastrucutre	110-000-1620-000	110-000-1680-010	Sewer Line Segments - Buchanan Drive	4,393.00	65	3,311.65	67.58	3,379.23	1,013.77
110	550	Infrastrucutre	110-000-1620-000	110-000-1680-010	Sewer Line Segments - Coloma Street	5,561.00	65	4,192.14	85.55	4,277.69	1,283.31
110	550	Infrastrucutre	110-000-1620-000	110-000-1680-010	Sewer Line Segments - Libership Way	5,954.00	65	4,488.40	91.60	4,580.00	1,374.00
110	550	Infrastrucutre	110-000-1620-000	110-000-1680-010	Sewer Line Segments - Sacramento Avenue	6,152.00	65	4,637.66	94.65	4,732.31	1,419.69
110	550	Infrastrucutre	110-000-1620-000	110-000-1680-010	Sewer Line Segments - Coloma Street	6,382.00	65	4,811.05	98.18	4,909.23	1,472.77
110	550	Infrastrucutre	110-000-1620-000	110-000-1680-010	Sewer Line Segments - Lincoln Avenue	6,719.00	65	5,065.09	103.37	5,168.46	1,550.54
110	550	Infrastrucutre	110-000-1620-000	110-000-1680-010	Sewer Line Segments - Tomales Street	6,992.00	65	5,270.89	107.57	5,378.46	1,613.54
110	550	Infrastrucutre	110-000-1620-000	110-000-1680-010	Sewer Line Segments - Olima Street	7,201.00	65	5,428.45	110.78	5,539.23	1,661.77
110	550	Infrastrucutre	110-000-1620-000	110-000-1680-010	Sewer Line Segments - Marinship Way	7,649.00	65	5,766.17	117.68	5,883.85	1,765.15
110	550	Infrastrucutre	110-000-1620-000	110-000-1680-010	Sewer Line Segments - Marinship Way	7,965.00	65	6,004.38	122.54	6,126.92	1,838.08
110	550	Infrastrucutre	110-000-1620-000	110-000-1680-010	Sewer Line Segments - Tomales Street R/W	8,201.00	65	6,182.29	126.17	6,308.46	1,892.54
110	550	Infrastrucutre	110-000-1620-000	110-000-1680-010	Sewer Line Segments - Marinship Way	9,201.00	65	6,936.14	141.55	7,077.69	2,123.31

110	550	Infrastrucutre	110-000-1620-000	110-000-1680-010	Sewer Line Segments - Liberyship Way	9,552.00	65	7,200.74	146.95	7,347.69	2,204.31
110	550	Infrastrucutre	110-000-1620-000	110-000-1680-010	Sewer Line Segments - Butte Street R/W	9,559.00	65	7,206.02	147.06	7,353.08	2,205.92
110	550	Infrastrucutre	110-000-1620-000	110-000-1680-010	Sewer Line Segments - Liberyship Way	9,708.00	65	7,318.34	149.35	7,467.69	2,240.31
110	550	Infrastrucutre	110-000-1620-000	110-000-1680-010	Sewer Line Segments - Olima Street	9,762.00	65	7,359.05	150.18	7,509.23	2,252.77
110	550	Infrastrucutre	110-000-1620-000	110-000-1680-010	Sewer Line Segments - Coloma Street	9,823.00	65	7,405.03	151.12	7,556.15	2,266.85
110	550	Infrastrucutre	110-000-1620-000	110-000-1680-010	Sewer Line Segments - Gate 5 Road	10,265.00	65	7,738.23	157.92	7,896.15	2,368.85
110	550	Infrastrucutre	110-000-1620-000	110-000-1680-010	Sewer Line Segments - Buchanan Drive	10,480.00	65	7,900.31	161.23	8,061.54	2,418.46
110	550	Infrastrucutre	110-000-1620-000	110-000-1680-010	Sewer Line Segments - Coloma Street	10,526.00	65	7,934.98	161.94	8,096.92	2,429.08
110	550	Infrastrucutre	110-000-1620-000	110-000-1680-010	Sewer Line Segments - Tomales Street	10,625.00	65	8,009.62	163.46	8,173.08	2,451.92
110	550	Infrastrucutre	110-000-1620-000	110-000-1680-010	Sewer Line Segments - Butte Street	10,730.00	65	8,088.77	165.08	8,253.85	2,476.15
110	550	Infrastrucutre	110-000-1620-000	110-000-1680-010	Sewer Line Segments - Liberyship Way	10,782.00	65	8,127.97	165.88	8,293.85	2,488.15
110	550	Infrastrucutre	110-000-1620-000	110-000-1680-010	Sewer Line Segments - Marinship Way	11,120.00	65	8,382.77	171.08	8,553.85	2,566.15
110	550	Infrastrucutre	110-000-1620-000	110-000-1680-010	Sewer Line Segments - Butte Street R/W	11,254.00	65	8,483.78	173.14	8,656.92	2,597.08
110	550	Infrastrucutre	110-000-1620-000	110-000-1680-010	Sewer Line Segments - Williams Court	11,621.00	65	8,760.45	178.78	8,939.23	2,681.77
110	550	Infrastrucutre	110-000-1620-000	110-000-1680-010	Sewer Line Segments - Buchanan Drive R/W	11,792.00	65	8,889.35	181.42	9,070.77	2,721.23
110	550	Infrastrucutre	110-000-1620-000	110-000-1680-010	Sewer Line Segments - Lincoln Avenue	12,104.00	65	9,124.55	186.22	9,310.77	2,793.23
110	550	Infrastrucutre	110-000-1620-000	110-000-1680-010	Sewer Line Segments - Liberyship Way	12,731.00	65	9,597.22	195.86	9,793.08	2,937.92
110	550	Infrastrucutre	110-000-1620-000	110-000-1680-010	Sewer Line Segments - Buchanan Drive	12,748.00	65	9,610.03	196.12	9,806.15	2,941.85
110	550	Infrastrucutre	110-000-1620-000	110-000-1680-010	Sewer Line Segments - Coloma Street	13,401.00	65	10,102.29	206.17	10,308.46	3,092.54
110	550	Infrastrucutre	110-000-1620-000	110-000-1680-010	Sewer Line Segments - Gate 5 Road	13,662.00	65	10,299.05	210.18	10,509.23	3,152.77
110	550	Infrastrucutre	110-000-1620-000	110-000-1680-010	Sewer Line Segments - Buchanan Drive R/W	13,946.00	65	10,513.14	214.55	10,727.69	3,218.31
110	550	Infrastrucutre	110-000-1620-000	110-000-1680-010	Sewer Line Segments - Coloma Street	14,009.00	65	10,560.63	215.52	10,776.15	3,232.85
110	550	Infrastrucutre	110-000-1620-000	110-000-1680-010	Sewer Line Segments - Tomales Street R/W	14,261.00	65	10,750.60	219.40	10,970.00	3,291.00
110	550	Infrastrucutre	110-000-1620-000	110-000-1680-010	Sewer Line Segments - Butte Street	14,280.00	65	10,764.92	219.69	10,984.62	3,295.38
110	550	Infrastrucutre	110-000-1620-000	110-000-1680-010	Sewer Line Segments - Olima Street	14,743.00	65	11,113.95	226.82	11,340.77	3,402.23
110	550	Infrastrucutre	110-000-1620-000	110-000-1680-010	Sewer Line Segments - Coloma Street	14,980.00	65	11,292.62	230.46	11,523.08	3,456.92
110	550	Infrastrucutre	110-000-1620-000	110-000-1680-010	Sewer Line Segments - Marinship Way	15,241.00	65	11,489.37	234.48	11,723.85	3,517.15
110	550	Infrastrucutre	110-000-1620-000	110-000-1680-010	Sewer Line Segments - Liberyship Way	15,303.00	65	11,536.11	235.43	11,771.54	3,531.46
110	550	Infrastrucutre	110-000-1620-000	110-000-1680-010	Sewer Line Segments - Harbor Drive	15,704.00	65	11,838.40	241.60	12,080.00	3,624.00
110	550	Infrastrucutre	110-000-1620-000	110-000-1680-010	Sewer Line Segments - Lincoln Avenue	15,743.00	65	11,867.80	242.20	12,110.00	3,633.00
110	550	Infrastrucutre	110-000-1620-000	110-000-1680-010	Sewer Line Segments - Sacramento Avenue	16,305.00	65	12,291.46	250.85	12,542.31	3,762.69
110	550	Infrastrucutre	110-000-1620-000	110-000-1680-010	Sewer Line Segments - Lincoln Avenue	17,539.00	65	13,221.71	269.83	13,491.54	4,047.46
110	550	Infrastrucutre	110-000-1620-000	110-000-1680-010	Sewer Line Segments - Buchanan Drive	17,925.00	65	13,512.69	275.77	13,788.46	4,136.54
110	550	Infrastrucutre	110-000-1620-000	110-000-1680-010	Sewer Line Segments - Tomales Street	17,984.00	65	13,557.17	276.68	13,833.85	4,150.15
110	550	Infrastrucutre	110-000-1620-000	110-000-1680-010	Sewer Line Segments - Buchanan Ct. R/W	19,164.00	65	14,446.71	294.83	14,741.54	4,422.46
110	550	Infrastrucutre	110-000-1620-000	110-000-1680-010	Sewer Line Segments - Butte Street	19,928.00	65	15,022.65	306.58	15,329.23	4,598.77
110	550	Infrastrucutre	110-000-1620-000	110-000-1680-010	Sewer Line Segments - Lincoln Avenue	20,218.00	65	15,241.26	311.05	15,552.31	4,665.69
110	550	Infrastrucutre	110-000-1620-000	110-000-1680-010	Sewer Line Segments - Liberyship Way	20,342.00	65	15,334.74	312.95	15,647.69	4,694.31
110	550	Infrastrucutre	110-000-1620-000	110-000-1680-010	Sewer Line Segments - Buchanan Drive	20,414.00	65	15,389.02	314.06	15,703.08	4,710.92
110	550	Infrastrucutre	110-000-1620-000	110-000-1680-010	Sewer Line Segments - Bridgeway	20,871.00	65	15,733.52	321.09	16,054.62	4,816.38
110	550	Infrastrucutre	110-000-1620-000	110-000-1680-010	Sewer Line Segments - Lincoln Avenue	20,940.00	65	15,785.54	322.15	16,107.69	4,832.31
110	550	Infrastrucutre	110-000-1620-000	110-000-1680-010	Sewer Line Segments - Coloma Street	21,427.00	65	16,152.66	329.65	16,482.31	4,944.69
110	550	Infrastrucutre	110-000-1620-000	110-000-1680-010	Sewer Line Segments - Lincoln Avenue	22,011.00	65	16,592.91	338.63	16,931.54	5,079.46
110	550	Infrastrucutre	110-000-1620-000	110-000-1680-010	Sewer Line Segments - Harbor Drive	22,232.00	65	16,759.51	342.03	17,101.54	5,130.46
110	550	Infrastrucutre	110-000-1620-000	110-000-1680-010	Sewer Line Segments - Marinship Way	22,250.00	65	16,773.08	342.31	17,115.38	5,134.62
110	550	Infrastrucutre	110-000-1620-000	110-000-1680-010	Sewer Line Segments - Butte Street	22,255.00	65	16,776.85	342.38	17,119.23	5,135.77
110	550	Infrastrucutre	110-000-1620-000	110-000-1680-010	Sewer Line Segments - Marinship Way	22,551.00	65	16,999.98	346.94	17,346.92	5,204.08
110	550	Infrastrucutre	110-000-1620-000	110-000-1680-010	Sewer Line Segments - Marinship Way	23,662.00	65	17,837.51	364.03	18,201.54	5,460.46
110	550	Infrastrucutre	110-000-1620-000	110-000-1680-010	Sewer Line Segments - Platt Avenue	24,868.00	65	18,746.65	382.58	19,129.23	5,738.77
110	550	Infrastrucutre	110-000-1620-000	110-000-1680-010	Sewer Line Segments - Coloma Street R/W	25,890.00	65	19,517.08	398.31	19,915.38	5,974.62
110	550	Infrastrucutre	110-000-1620-000	110-000-1680-010	Sewer Line Segments - Harbor Drive	25,905.00	65	19,528.38	398.54	19,926.92	5,978.08
110	550	Infrastrucutre	110-000-1620-000	110-000-1680-010	Sewer Line Segments - Liberyship Way	26,666.00	65	20,102.06	410.25	20,512.31	6,153.69
110	550	Infrastrucutre	110-000-1620-000	110-000-1680-010	Sewer Line Segments - Bridgeway	27,149.00	65	20,466.17	417.68	20,883.85	6,265.15
110	550	Infrastrucutre	110-000-1620-000	110-000-1680-010	Sewer Line Segments - Tomales Street	27,237.00	65	20,532.51	419.03	20,951.54	6,285.46
110	550	Infrastrucutre	110-000-1620-000	110-000-1680-010	Sewer Line Segments - Marina Plaza	27,380.00	65	20,640.31	421.23	21,061.54	6,318.46
110	550	Infrastrucutre	110-000-1620-000	110-000-1680-010	Sewer Line Segments - Coloma Street	27,393.00	65	20,650.11	421.43	21,071.54	6,321.46
110	550	Infrastrucutre	110-000-1620-000	110-000-1680-010	Sewer Line Segments - Tomales Street	29,129.00	65	21,958.78	448.14	22,406.92	6,722.08
110	550	Infrastrucutre	110-000-1620-000	110-000-1680-010	Sewer Line Segments - Wateree Street	29,314.00	65	22,098.25	450.98	22,549.23	6,764.77
110	550	Infrastrucutre	110-000-1620-000	110-000-1680-010	Sewer Line Segments - Bridgeway	29,322.00	65	22,104.28	451.11	22,555.38	6,766.62

110	550	Infrastrucutre	110-000-1620-000	110-000-1680-010	Sewer Line Segments - Coloma Street	30,330.00	65	22,864.15	466.62	23,330.77	6,999.23
110	550	Infrastrucutre	110-000-1620-000	110-000-1680-010	Sewer Line Segments - Marinship Way	31,200.00	65	23,520.00	480.00	24,000.00	7,200.00
110	550	Infrastrucutre	110-000-1620-000	110-000-1680-010	Sewer Line Segments - Tomales Street	31,321.00	65	23,611.22	481.86	24,093.08	7,227.92
110	550	Infrastrucutre	110-000-1620-000	110-000-1680-010	Sewer Line Segments - Marinship Way	32,354.00	65	24,389.94	497.75	24,887.69	7,466.31
110	550	Infrastrucutre	110-000-1620-000	110-000-1680-010	Sewer Line Segments - Marinship Way	33,218.00	65	25,041.26	511.05	25,552.31	7,665.69
110	550	Infrastrucutre	110-000-1620-000	110-000-1680-010	Sewer Line Segments - Gate 5 Road	33,909.00	65	25,562.17	521.68	26,083.85	7,825.15
110	550	Infrastrucutre	110-000-1620-000	110-000-1680-010	Sewer Line Segments - Marinship Way	35,075.00	65	26,441.15	539.62	26,980.77	8,094.23
110	550	Infrastrucutre	110-000-1620-000	110-000-1680-010	Sewer Line Segments - Coloma Street	36,500.00	65	27,515.38	561.54	28,076.92	8,423.08
110	550	Infrastrucutre	110-000-1620-000	110-000-1680-010	Sewer Line Segments - Olima Street	36,968.00	65	27,868.18	568.74	28,436.92	8,531.08
110	550	Infrastrucutre	110-000-1620-000	110-000-1680-010	Sewer Line Segments - Gate 5 Road	37,933.00	65	28,595.65	583.58	29,179.23	8,753.77
110	550	Infrastrucutre	110-000-1620-000	110-000-1680-010	Sewer Line Segments - Gate 5 Road	39,092.00	65	29,469.35	601.42	30,070.77	9,021.23
110	550	Infrastrucutre	110-000-1620-000	110-000-1680-010	Sewer Line Segments - Coloma Street	39,263.00	65	29,598.26	604.05	30,202.31	9,060.69
110	550	Infrastrucutre	110-000-1620-000	110-000-1680-010	Sewer Line Segments - Liberyship Way	43,303.00	65	32,643.80	666.20	33,310.00	9,993.00
110	550	Infrastrucutre	110-000-1620-000	110-000-1680-010	Sewer Line Segments - Marinship Way	44,069.00	65	33,221.25	677.98	33,899.23	10,169.77
110	550	Infrastrucutre	110-000-1620-000	110-000-1680-010	Sewer Line Segments - Coloma Street	81,612.00	65	61,522.89	1,255.57	62,778.46	18,833.54
110	550	Infrastrucutre	110-000-1620-000	110-000-1680-010	Sewer Line Segments - Marinship Way	257,190.00	65	193,881.69	3,956.77	197,838.46	59,351.54
110	550	Equipment	110-000-1650-000	110-000-1680-040	Gate 5 Pump Station	65,445.00	30	65,445.00	-	65,445.00	-
110	550	Infrastrucutre	110-000-1620-000	110-000-1680-010	SEWER MANHOLE - Marina Plaza	4,200.00	65	2,843.08	64.62	2,907.69	1,292.31
110	550	Infrastrucutre	110-000-1620-000	110-000-1680-010	SEWER MANHOLE - Marin Avenue	4,200.00	65	2,843.08	64.62	2,907.69	1,292.31
110	550	Infrastrucutre	110-000-1620-000	110-000-1680-010	SEWER MANHOLE - Marin Avenue	4,200.00	65	2,843.08	64.62	2,907.69	1,292.31
110	550	Infrastrucutre	110-000-1620-000	110-000-1680-010	SEWER MANHOLE - Marin Avenue	4,200.00	65	2,843.08	64.62	2,907.69	1,292.31
110	550	Infrastrucutre	110-000-1620-000	110-000-1680-010	SEWER MANHOLE - Marin Avenue	4,200.00	65	2,843.08	64.62	2,907.69	1,292.31
110	550	Infrastrucutre	110-000-1620-000	110-000-1680-010	SEWER MANHOLE - Lincoln Drive	4,200.00	65	2,843.08	64.62	2,907.69	1,292.31
110	550	Infrastrucutre	110-000-1620-000	110-000-1680-010	SEWER MANHOLE - Nevada Street	4,200.00	65	2,843.08	64.62	2,907.69	1,292.31
110	550	Infrastrucutre	110-000-1620-000	110-000-1680-010	SEWER MANHOLE - Kendall Court	4,200.00	65	2,843.08	64.62	2,907.69	1,292.31
110	550	Infrastrucutre	110-000-1620-000	110-000-1680-010	SEWER MANHOLE - Kendall Court	4,200.00	65	2,843.08	64.62	2,907.69	1,292.31
110	550	Infrastrucutre	110-000-1620-000	110-000-1680-010	SEWER MANHOLE - Kendall Court	4,200.00	65	2,843.08	64.62	2,907.69	1,292.31
110	550	Infrastrucutre	110-000-1620-000	110-000-1680-010	SEWER MANHOLE - Arana Circle	4,200.00	65	2,843.08	64.62	2,907.69	1,292.31
110	550	Infrastrucutre	110-000-1620-000	110-000-1680-010	SEWER MANHOLE - Arana Circle	4,200.00	65	2,843.08	64.62	2,907.69	1,292.31
110	550	Infrastrucutre	110-000-1620-000	110-000-1680-010	SEWER MANHOLE - Marin Avenue	4,200.00	65	2,843.08	64.62	2,907.69	1,292.31
110	550	Infrastrucutre	110-000-1620-000	110-000-1680-010	SEWER MANHOLE - Marin Avenue	4,200.00	65	2,843.08	64.62	2,907.69	1,292.31
110	550	Infrastrucutre	110-000-1620-000	110-000-1680-010	SEWER MANHOLE - Lincoln Drive R/W	4,200.00	65	2,843.08	64.62	2,907.69	1,292.31
110	550	Infrastrucutre	110-000-1620-000	110-000-1680-010	SEWER MANHOLE - Lincoln Drive R/W	4,200.00	65	2,843.08	64.62	2,907.69	1,292.31
110	550	Infrastrucutre	110-000-1620-000	110-000-1680-010	SEWER MANHOLE - Lincoln Drive R/W	4,200.00	65	2,843.08	64.62	2,907.69	1,292.31
110	550	Infrastrucutre	110-000-1620-000	110-000-1680-010	SEWER MANHOLE - Lincoln Drive R/W	4,200.00	65	2,843.08	64.62	2,907.69	1,292.31
110	550	Infrastrucutre	110-000-1620-000	110-000-1680-010	SEWER MANHOLE - Lincoln Drive R/W	4,200.00	65	2,843.08	64.62	2,907.69	1,292.31
110	550	Infrastrucutre	110-000-1620-000	110-000-1680-010	SEWER MANHOLE - Lincoln Drive R/W	4,200.00	65	2,843.08	64.62	2,907.69	1,292.31
110	550	Infrastrucutre	110-000-1620-000	110-000-1680-010	SEWER MANHOLE - Lincoln Drive R/W	4,200.00	65	2,843.08	64.62	2,907.69	1,292.31
110	550	Infrastrucutre	110-000-1620-000	110-000-1680-010	SEWER MANHOLE - Lincoln Drive R/W	4,200.00	65	2,843.08	64.62	2,907.69	1,292.31
110	550	Infrastrucutre	110-000-1620-000	110-000-1680-010	SEWER MANHOLE - Lincoln Drive R/W	4,200.00	65	2,843.08	64.62	2,907.69	1,292.31
110	550	Infrastrucutre	110-000-1620-000	110-000-1680-010	SEWER MANHOLE - Gate 5 Road	4,200.00	65	2,843.08	64.62	2,907.69	1,292.31
110	550	Infrastrucutre	110-000-1620-000	110-000-1680-010	SEWER MANHOLE - Gate 5 Road	4,200.00	65	2,843.08	64.62	2,907.69	1,292.31
110	550	Infrastrucutre	110-000-1620-000	110-000-1680-010	SEWER MANHOLE - Gate 5 Road	4,200.00	65	2,843.08	64.62	2,907.69	1,292.31
110	550	Infrastrucutre	110-000-1620-000	110-000-1680-010	SEWER MANHOLE - Harbor Drive	4,200.00	65	2,843.08	64.62	2,907.69	1,292.31
110	550	Infrastrucutre	110-000-1620-000	110-000-1680-010	SEWER MANHOLE - Harbor Drive	4,200.00	65	2,843.08	64.62	2,907.69	1,292.31
110	550	Infrastrucutre	110-000-1620-000	110-000-1680-010	SEWER MANHOLE - Gate 5 Road	4,200.00	65	2,843.08	64.62	2,907.69	1,292.31
110	550	Infrastrucutre	110-000-1620-000	110-000-1680-010	SEWER MANHOLE - Harbor Drive	4,200.00	65	2,843.08	64.62	2,907.69	1,292.31
110	550	Infrastrucutre	110-000-1620-000	110-000-1680-010	SEWER MANHOLE - Coloma Street R/W	4,200.00	65	2,843.08	64.62	2,907.69	1,292.31
110	550	Infrastrucutre	110-000-1620-000	110-000-1680-010	SEWER MANHOLE - Coloma Street	4,200.00	65	2,843.08	64.62	2,907.69	1,292.31
110	550	Infrastrucutre	110-000-1620-000	110-000-1680-010	SEWER MANHOLE - Coloma Street	4,200.00	65	2,843.08	64.62	2,907.69	1,292.31
110	550	Infrastrucutre	110-000-1620-000	110-000-1680-010	SEWER MANHOLE - Coloma Street	4,200.00	65	2,843.08	64.62	2,907.69	1,292.31
110	550	Infrastrucutre	110-000-1620-000	110-000-1680-010	SEWER MANHOLE - Coloma Street	4,200.00	65	2,843.08	64.62	2,907.69	1,292.31

110	550	Infrastrucutre	110-000-1620-000	110-000-1680-010	Sewer Line Segments - Currey Lane	14,384.22	65	7,524.05	221.30	7,745.35	6,638.87
110	550	Infrastrucutre	110-000-1620-000	110-000-1680-010	Sewer Line Segments - Currey Avenue	14,412.71	65	7,538.96	221.73	7,760.69	6,652.02
110	550	Infrastrucutre	110-000-1620-000	110-000-1680-010	Sewer Line Segments - Currey Avenue	18,134.00	65	9,485.48	278.98	9,764.46	8,369.54
110	550	Infrastrucutre	110-000-1620-000	110-000-1680-010	Sewer Line Segments - 100 Ebbtide Avenue	4,703.81	65	2,388.09	72.37	2,460.46	2,243.36
110	550	Infrastrucutre	110-000-1620-000	110-000-1680-010	Sewer Line Segments - 100 Ebbtide Avenue	9,736.89	65	4,943.35	149.80	5,093.14	4,643.75
110	550	Infrastrucutre	110-000-1620-000	110-000-1680-010	Sewer Line Segments - 100 Ebbtide Avenue	16,591.63	65	8,423.44	255.26	8,678.70	7,912.93
110	550	Infrastrucutre	110-000-1620-000	110-000-1680-010	Sewer Line Segments - 100 Ebbtide Avenue	21,214.20	65	10,770.29	326.37	11,096.66	10,117.54
110	550	Infrastrucutre	110-000-1620-000	110-000-1680-010	Sewer Line Segments - 100 Ebbtide Avenue	22,184.04	65	11,262.67	341.29	11,603.96	10,580.08
110	550	Infrastrucutre	110-000-1620-000	110-000-1680-010	Sewer Line Segments - 100 Ebbtide Avenue	25,229.55	65	12,808.85	388.15	13,196.99	12,032.55
110	550	Infrastrucutre	110-000-1620-000	110-000-1680-010	Sewer Line Segments - 100 Ebbtide Avenue	29,510.87	65	14,982.44	454.01	15,436.46	14,074.42
110	550	Infrastrucutre	110-000-1620-000	110-000-1680-010	Sewer Line Segments - Toyon Lane	5,479.52	65	2,697.61	84.30	2,781.91	2,697.61
110	550	Infrastrucutre	110-000-1620-000	110-000-1680-010	Sewer Line Segments - Toyon Lane	5,638.85	65	2,776.05	86.75	2,862.80	2,776.05
110	550	Infrastrucutre	110-000-1620-000	110-000-1680-010	Sewer Line Segments - Toyon Lane	5,918.00	65	2,913.48	91.05	3,004.53	2,913.48
110	550	Infrastrucutre	110-000-1620-000	110-000-1680-010	Sewer Line Segments - Toyon Lane	6,541.28	65	3,220.32	100.64	3,320.96	3,220.32
110	550	Infrastrucutre	110-000-1620-000	110-000-1680-010	Sewer Line Segments - Toyon Lane R/W	7,203.61	65	3,546.39	110.82	3,657.22	3,546.39
110	550	Infrastrucutre	110-000-1620-000	110-000-1680-010	Sewer Line Segments - Toyon Lane	15,567.74	65	7,664.12	239.50	7,903.62	7,664.12
110	550	Equipment	110-000-1650-000	110-000-1680-040	Anchor Pump Station	4,443.00	30	4,443.00	-	4,443.00	-
110	550	Infrastrucutre	110-000-1620-000	110-000-1680-010	Sewer Line Segments - Bridgeway	1,836.00	65	875.63	28.25	903.88	932.12
110	550	Infrastrucutre	110-000-1620-000	110-000-1680-010	Sewer Line Segments - Bridgeway	1,838.00	65	876.58	28.28	904.86	933.14
110	550	Infrastrucutre	110-000-1620-000	110-000-1680-010	Sewer Line Segments - Bridgeway	2,625.00	65	1,251.92	40.38	1,292.31	1,332.69
110	550	Infrastrucutre	110-000-1620-000	110-000-1680-010	Sewer Line Segments - Bridgeway	4,201.00	65	2,003.55	64.63	2,068.18	2,132.82
110	550	Infrastrucutre	110-000-1620-000	110-000-1680-010	Sewer Line Segments - Bridgeway	4,549.00	65	2,169.52	69.98	2,239.51	2,309.49
110	550	Infrastrucutre	110-000-1620-000	110-000-1680-010	Sewer Line Segments - Bridgeway	4,827.00	65	2,302.11	74.26	2,376.37	2,450.63
110	550	Infrastrucutre	110-000-1620-000	110-000-1680-010	Sewer Line Segments - El Monte Lane	5,420.00	65	2,584.92	83.38	2,668.31	2,751.69
110	550	Infrastrucutre	110-000-1620-000	110-000-1680-010	Sewer Line Segments - Bridgeway	6,888.00	65	3,285.05	105.97	3,391.02	3,496.98
110	550	Infrastrucutre	110-000-1620-000	110-000-1680-010	Sewer Line Segments - Bridgeway	6,989.00	65	3,333.22	107.52	3,440.74	3,548.26
110	550	Infrastrucutre	110-000-1620-000	110-000-1680-010	Sewer Line Segments - Bridgeway	7,139.00	65	3,404.75	109.83	3,514.58	3,624.42
110	550	Infrastrucutre	110-000-1620-000	110-000-1680-010	Sewer Line Segments - El Monte Lane	8,106.00	65	3,865.94	124.71	3,990.65	4,115.35
110	550	Infrastrucutre	110-000-1620-000	110-000-1680-010	Sewer Line Segments - Bridgeway	8,140.00	65	3,882.15	125.23	4,007.38	4,132.62
110	550	Infrastrucutre	110-000-1620-000	110-000-1680-010	Sewer Line Segments - Bridgeway	10,302.00	65	4,913.26	158.49	5,071.75	5,230.25
110	550	Infrastrucutre	110-000-1620-000	110-000-1680-010	Sewer Line Segments - Bridgeway	10,548.00	65	5,030.58	162.28	5,192.86	5,355.14
110	550	Infrastrucutre	110-000-1620-000	110-000-1680-010	Sewer Line Segments - Bridgeway	10,704.00	65	5,104.98	164.68	5,269.66	5,434.34
110	550	Infrastrucutre	110-000-1620-000	110-000-1680-010	Sewer Line Segments - Bridgeway	10,964.00	65	5,228.98	168.68	5,397.66	5,566.34
110	550	Infrastrucutre	110-000-1620-000	110-000-1680-010	Sewer Line Segments - Bridgeway	11,804.00	65	5,629.60	181.60	5,811.20	5,992.80
110	550	Infrastrucutre	110-000-1620-000	110-000-1680-010	Sewer Line Segments - Bridgeway	12,200.00	65	5,818.46	187.69	6,006.15	6,193.85
110	550	Infrastrucutre	110-000-1620-000	110-000-1680-010	Sewer Line Segments - El Monte Lane	13,238.00	65	6,313.51	203.66	6,517.17	6,720.83
110	550	Infrastrucutre	110-000-1620-000	110-000-1680-010	Sewer Line Segments - Bridgeway	13,463.00	65	6,420.82	207.12	6,627.94	6,835.06
110	550	Infrastrucutre	110-000-1620-000	110-000-1680-010	Sewer Line Segments - Bridgeway	13,471.00	65	6,424.63	207.25	6,631.88	6,839.12
110	550	Infrastrucutre	110-000-1620-000	110-000-1680-010	Sewer Line Segments - Bridgeway	17,608.00	65	8,397.66	270.89	8,668.55	8,939.45
110	550	Infrastrucutre	110-000-1620-000	110-000-1680-010	Sewer Line Segments - Bridgeway	17,966.00	65	8,568.40	276.40	8,844.80	9,121.20
110	550	Infrastrucutre	110-000-1620-000	110-000-1680-010	Sewer Line Segments - Bridgeway	19,079.00	65	9,099.22	293.52	9,392.74	9,686.26
110	550	Infrastrucutre	110-000-1620-000	110-000-1680-010	Sewer Line Segments - Bridgeway	19,104.00	65	9,111.14	293.91	9,405.05	9,698.95
110	550	Infrastrucutre	110-000-1620-000	110-000-1680-010	Sewer Line Segments - Bridgeway	19,700.00	65	9,395.38	303.08	9,698.46	10,001.54
110	550	Infrastrucutre	110-000-1620-000	110-000-1680-010	Sewer Line Segments - Bridgeway	19,909.00	65	9,495.06	306.29	9,801.35	10,107.65
110	550	Infrastrucutre	110-000-1620-000	110-000-1680-010	Sewer Line Segments - Bridgeway	21,006.00	65	10,018.25	323.17	10,341.42	10,664.58
110	550	Infrastrucutre	110-000-1620-000	110-000-1680-010	Sewer Line Segments - Bridgeway	21,645.00	65	10,323.00	333.00	10,656.00	10,989.00
110	550	Infrastrucutre	110-000-1620-000	110-000-1680-010	Sewer Line Segments - Bulkeley Avenue	22,230.00	65	10,602.00	342.00	10,944.00	11,286.00
110	550	Infrastrucutre	110-000-1620-000	110-000-1680-010	Sewer Line Segments - Bridgeway	22,908.00	65	10,925.35	352.43	11,277.78	11,630.22
110	550	Infrastrucutre	110-000-1620-000	110-000-1680-010	Sewer Line Segments - Bridgeway	23,022.00	65	10,979.72	354.18	11,333.91	11,688.09
110	550	Infrastrucutre	110-000-1620-000	110-000-1680-010	Sewer Line Segments - Bulkeley Avenue	24,207.00	65	11,544.88	372.42	11,917.29	12,289.71
110	550	Infrastrucutre	110-000-1620-000	110-000-1680-010	Sewer Line Segments - Bridgeway	27,386.00	65	13,061.02	421.32	13,482.34	13,903.66
110	550	Infrastrucutre	110-000-1620-000	110-000-1680-010	Sewer Line Segments - Bridgeway	30,103.00	65	14,356.82	463.12	14,819.94	15,283.06
110	550	Infrastrucutre	110-000-1620-000	110-000-1680-010	Sewer Line Segments - Bridgeway	30,861.00	65	14,718.32	474.78	15,193.11	15,667.89
110	550	Infrastrucutre	110-000-1620-000	110-000-1680-010	Sewer Line Segments - Bridgeway	30,958.00	65	14,764.58	476.28	15,240.86	15,717.14
110	550	Infrastrucutre	110-000-1620-000	110-000-1680-010	Sewer Line Segments - Harrison Avenue	30,973.00	65	14,771.74	476.51	15,248.25	15,724.75
110	550	Infrastrucutre	110-000-1620-000	110-000-1680-010	Sewer Line Segments - Bridgeway	33,560.00	65	16,005.54	516.31	16,521.85	17,038.15
110	550	Infrastrucutre	110-000-1620-000	110-000-1680-010	Sewer Line Segments - Bridgeway	36,007.00	65	17,172.57	553.95	17,726.52	18,280.48
110	550	Infrastrucutre	110-000-1620-000	110-000-1680-010	Sewer Line Segments - San Carlos Avenue	39,883.00	65	19,021.12	613.58	19,634.71	20,248.29
110	550	Infrastrucutre	110-000-1620-000	110-000-1680-010	Sewer Line Segments - Bridgeway	45,068.00	65	21,493.97	693.35	22,187.32	22,880.68

110	550	Infrastrucutre	110-000-1620-000	110-000-1680-010	Sewer Line Segments - Platt Avenue	659.79	65	304.52	10.15	314.67	345.12
110	550	Infrastrucutre	110-000-1620-000	110-000-1680-010	Sewer Line Segments - Platt Avenue	2,145.29	65	990.14	33.00	1,023.14	1,122.15
110	550	Infrastrucutre	110-000-1620-000	110-000-1680-010	Sewer Line Segments - Platt Avenue	2,206.27	65	1,018.28	33.94	1,052.22	1,154.05
110	550	Infrastrucutre	110-000-1620-000	110-000-1680-010	Sewer Line Segments - Platt Avenue	2,445.25	65	1,128.58	37.62	1,166.20	1,279.05
110	550	Infrastrucutre	110-000-1620-000	110-000-1680-010	Sewer Line Segments - Platt Avenue	4,292.23	65	1,981.03	66.03	2,047.07	2,245.17
110	550	Infrastrucutre	110-000-1620-000	110-000-1680-010	Sewer Line Segments - Platt Avenue	4,447.16	65	2,052.53	68.42	2,120.95	2,326.20
110	550	Infrastrucutre	110-000-1620-000	110-000-1680-010	Sewer Line Segments - Toyon Court R/W	1,429.45	65	637.76	21.99	659.75	769.71
110	550	Infrastrucutre	110-000-1620-000	110-000-1680-010	Sewer Line Segments - Toyon Court R/W	2,292.10	65	1,022.63	35.26	1,057.89	1,234.21
110	550	Infrastrucutre	110-000-1620-000	110-000-1680-010	Sewer Line Segments - Toyon Court R/W	2,542.47	65	1,134.33	39.11	1,173.45	1,369.02
110	550	Infrastrucutre	110-000-1620-000	110-000-1680-010	Sewer Line Segments - Toyon Court R/W	2,813.09	65	1,255.07	43.28	1,298.35	1,514.74
110	550	Infrastrucutre	110-000-1620-000	110-000-1680-010	Sewer Line Segments - Toyon Court R/W	2,922.83	65	1,304.03	44.97	1,349.00	1,573.83
110	550	Infrastrucutre	110-000-1620-000	110-000-1680-010	Sewer Line Segments - Toyon Court R/W	3,269.81	65	1,458.84	50.30	1,509.14	1,760.66
110	550	Infrastrucutre	110-000-1620-000	110-000-1680-010	Sewer Line Segments - Toyon Court R/W	3,615.01	65	1,612.85	55.62	1,668.46	1,946.54
110	550	Infrastrucutre	110-000-1620-000	110-000-1680-010	Sewer Line Segments - Toyon Court R/W	4,748.98	65	2,118.77	73.06	2,191.84	2,557.14
110	550	Infrastrucutre	110-000-1620-000	110-000-1680-010	Sewer Line Segments - Toyon Court R/W	8,770.27	65	3,912.89	134.93	4,047.82	4,722.45
110	550	Infrastrucutre	110-000-1620-000	110-000-1680-010	Sewer Line Segments - Richardson Street	297.95	65	119.18	4.58	123.76	174.19
110	550	Infrastrucutre	110-000-1620-000	110-000-1680-010	Sewer Line Segments - Richardson Street	5,955.92	65	2,382.37	91.63	2,474.00	3,481.92
110	550	Infrastrucutre	110-000-1620-000	110-000-1680-010	Sewer Line Segments - Richardson Street	9,504.22	65	3,801.69	146.22	3,947.91	5,556.31
110	550	Infrastrucutre	110-000-1620-000	110-000-1680-010	Sewer Line Segments - Richardson Street	10,110.80	65	4,044.32	155.55	4,199.87	5,910.93
110	550	Infrastrucutre	110-000-1620-000	110-000-1680-010	Sewer Line Segments - Richardson Street	10,156.58	65	4,062.63	156.26	4,218.89	5,937.69
110	550	Infrastrucutre	110-000-1620-000	110-000-1680-010	Sewer Line Segments - Richardson Street	13,398.53	65	5,359.41	206.13	5,565.54	7,832.99
110	550	Infrastrucutre	110-000-1620-000	110-000-1680-010	SEWER MANHOLE - Richardson Street	16,443.84	65	6,577.54	252.98	6,830.52	9,613.32
110	550	Infrastrucutre	110-000-1620-000	110-000-1680-010	SEWER MANHOLE - Richardson Street	16,443.86	65	6,577.54	252.98	6,830.53	9,613.33
110	550	Infrastrucutre	110-000-1620-000	110-000-1680-010	SEWER MANHOLE - Richardson Street	16,443.86	65	6,577.54	252.98	6,830.53	9,613.33
110	550	Infrastrucutre	110-000-1620-000	110-000-1680-010	SEWER MANHOLE - Richardson Street	16,443.86	65	6,577.54	252.98	6,830.53	9,613.33
110	550	Infrastrucutre	110-000-1620-000	110-000-1680-010	SEWER MANHOLE - Richardson Street	16,443.86	65	6,577.54	252.98	6,830.53	9,613.33
110	550	Infrastrucutre	110-000-1620-000	110-000-1680-010	SEWER MANHOLE - Richardson Street	16,443.86	65	6,577.54	252.98	6,830.53	9,613.33
110	550	Infrastrucutre	110-000-1620-000	110-000-1680-010	SEWER MANHOLE - Richardson Street	16,443.86	65	6,577.54	252.98	6,830.53	9,613.33
110	550	Vehicles	110-000-1660-000	110-000-1680-050	2000 FORD F-150	19,292.00	5	19,292.00	-	19,292.00	-
110	550	Equipment	110-000-1650-000	110-000-1680-040	Whiskey Spring Pump Station	13,300.00	30	11,083.33	443.33	11,526.67	1,773.33
110	550	Infrastrucutre	110-000-1620-000	110-000-1680-010	Sewer Line Segments - Ensign Street	11,246.40	65	3,979.50	173.02	4,152.52	7,093.88
110	550	Infrastrucutre	110-000-1620-000	110-000-1680-010	Sewer Line Segments - San Carlos Avenue R/W	48,000.00	65	16,984.62	738.46	17,723.08	30,276.92
110	550	Infrastrucutre	110-000-1620-000	110-000-1680-010	Sewer Line Segments - Ebbitide Avenue	20,000.00	65	6,769.23	307.69	7,076.92	12,923.08
110	550	Infrastrucutre	110-000-1620-000	110-000-1680-010	SEWER MANHOLE - North Street	7,338.31	65	2,257.94	112.90	2,370.84	4,967.47
110	550	Infrastrucutre	110-000-1620-000	110-000-1680-010	SEWER MANHOLE - 101 Ebbitide Avenue	11,170.09	65	3,436.95	171.85	3,608.80	7,561.29
110	550	Infrastrucutre	110-000-1620-000	110-000-1680-010	SEWER MANHOLE - Stanford Way	14,775.73	65	4,546.38	227.32	4,773.70	10,002.03
110	550	Infrastrucutre	110-000-1620-000	110-000-1680-010	SEWER MANHOLE - 100 Ebbitide Avenue	14,946.82	65	4,599.02	229.95	4,828.97	10,117.85
110	550	Infrastrucutre	110-000-1620-000	110-000-1680-010	SEWER MANHOLE - Josephine Street	20,449.68	65	6,292.21	314.61	6,606.82	13,842.86
110	550	Infrastrucutre	110-000-1620-000	110-000-1680-010	SEWER MANHOLE - Woodward Avenue/Olive Street	21,500.00	65	6,615.38	330.77	6,946.15	14,553.85
110	550	Infrastrucutre	110-000-1620-000	110-000-1680-010	SEWER MANHOLE - Glen Drive	23,000.00	65	7,076.92	353.85	7,430.77	15,569.23
110	550	Vehicles	110-000-1660-000	110-000-1680-050	2005 Ford Escape	21,677.64	5	21,677.64	-	21,677.64	-
110	550	Infrastrucutre	110-000-1620-000	110-000-1680-010	SEWER MANHOLE - 196 Harrison Avenue	6,500.00	65	1,800.00	100.00	1,900.00	4,600.00
110	550	Infrastrucutre	110-000-1620-000	110-000-1680-010	SEWER MANHOLE - 29-31 Santa Rosa	6,500.00	65	1,800.00	100.00	1,900.00	4,600.00
110	550	Infrastrucutre	110-000-1620-000	110-000-1680-010	SEWER MANHOLE - 18 Santa Rosa Avenue	6,500.00	65	1,800.00	100.00	1,900.00	4,600.00
110	550	Infrastrucutre	110-000-1620-000	110-000-1680-010	SEWER MANHOLE - 4 Santa Rosa Avjenue	6,500.00	65	1,800.00	100.00	1,900.00	4,600.00
110	550	Infrastrucutre	110-000-1620-000	110-000-1680-010	SS Main (SSMH#210910-210707) - 4 Santa Rosa Avenue	7,852.52	65	2,174.54	120.81	2,295.35	5,557.17
110	550	Infrastrucutre	110-000-1620-000	110-000-1680-010	SEWER MANHOLE - San Carlos/Harrison	9,850.00	65	2,727.69	151.54	2,879.23	6,970.77
110	550	Infrastrucutre	110-000-1620-000	110-000-1680-010	SS Main (SSMH#210711-210909) - 18 Santa Rosa Avenue	25,808.49	65	7,146.97	397.05	7,544.02	18,264.47
110	550	Infrastrucutre	110-000-1620-000	110-000-1680-010	SS Main (SSMH#210909-210910) - 33 Santa Rosa Avenue	40,140.80	65	11,115.91	617.55	11,733.46	28,407.34
110	550	Infrastrucutre	110-000-1620-000	110-000-1680-010	SS Main (SSMH#210708-210703) - 183 Harrison/San Carlos	121,129.15	65	33,543.46	1,863.53	35,406.98	85,722.17
110	550	Infrastrucutre	110-000-1620-000	110-000-1680-010	SEWER MANHOLEMH 100500 - South Street	262.50	65	64.62	-	64.62	197.88
110	550	Infrastrucutre	110-000-1620-000	110-000-1680-010	SEWER MANHOLEMH 100401 - Alexander Avenue	262.50	65	64.62	-	64.62	197.88
110	550	Infrastrucutre	110-000-1620-000	110-000-1680-010	Sewer Line Segments - Cloudiview Road	714.00	65	186.74	10.98	197.72	516.28
110	550	Infrastrucutre	110-000-1620-000	110-000-1680-010	SEWER MANHOLE - 290 Ebbitide Avenue	1,640.00	65	428.92	25.23	454.15	1,185.85
110	550	Infrastrucutre	110-000-1620-000	110-000-1680-010	SEWER MANHOLE - San Carlos Avenue	2,202.00	65	575.91	33.88	609.78	1,592.22
110	550	Infrastrucutre	110-000-1620-000	110-000-1680-010	Sewer Line Segments - Filbert Avenue	7,950.00	65	2,079.23	122.31	2,201.54	5,748.46
110	550	Infrastrucutre	110-000-1620-000	110-000-1680-010	SEWER MANHOLE - Santa Rosa Avenue	9,850.00	65	2,576.15	151.54	2,727.69	7,122.31
110	550	Infrastrucutre	110-000-1620-000	110-000-1680-010	SEWER MANHOLE - Santa Rosa Avenue	9,850.00	65	2,576.15	151.54	2,727.69	7,122.31
110	550	Infrastrucutre	110-000-1620-000	110-000-1680-010	SEWER MANHOLE - Spring Street	10,000.00	65	2,615.38	153.85	2,769.23	7,230.77

110	550	Infrastrucutre	110-000-1620-000	110-000-1680-010	SEWER MANHOLE - Currey Avenue/Monte	14,284.42	65	3,735.93	219.76	3,955.69	10,328.73
110	550	Infrastrucutre	110-000-1620-000	110-000-1680-010	SEWER MANHOLE - Currey	14,284.42	65	3,735.93	219.76	3,955.69	10,328.73
110	550	Infrastrucutre	110-000-1620-000	110-000-1680-010	SEWER MANHOLE - Harrison Avenue	15,850.00	65	4,145.38	243.85	4,389.23	11,460.77
110	550	Infrastrucutre	110-000-1620-000	110-000-1680-010	Sewer Line Segments - Cazneau Avenue	26,202.76	65	6,853.03	403.12	7,256.15	18,946.61
110	550	Infrastrucutre	110-000-1620-000	110-000-1680-010	SEWER MANHOLE - 292 Glen Drive	28,568.83	65	7,471.85	439.52	7,911.37	20,657.46
110	550	Infrastrucutre	110-000-1620-000	110-000-1680-010	SEWER MANHOLE - Glen Drive/Rose Court	28,568.83	65	7,471.85	439.52	7,911.37	20,657.46
110	550	Infrastrucutre	110-000-1620-000	110-000-1680-010	Sewer Line Segments - Santa Rosa Avenue	66,250.00	65	17,326.92	1,019.23	18,346.15	47,903.85
110	550	Infrastrucutre	110-000-1620-000	110-000-1680-010	Sewer Line Segments - Harrison Avenue	70,020.00	65	18,312.92	1,077.23	19,390.15	50,629.85
110	550	Vehicles	110-000-1660-000	110-000-1680-050	2009 International w/Vactor Sewer Cleaner	196,923.00	10	196,923.00	-	196,923.00	-
110	550	Equipment	110-000-1650-000	110-000-1680-040	(2) Motorola XTS5000 radios	7,382.02	10	7,382.02	-	7,382.02	-
110	550	Equipment	110-000-1650-000	110-000-1680-040	Godwin CD150M Diesel Pump	22,135.78	10	22,135.78	-	22,135.78	-
110	550	Equipment	110-000-1650-000	110-000-1680-040	ICOMMM PicAx Video Capture H/W	10,596.28	5	10,596.28	-	10,596.28	-
110	550	Vehicles	110-000-1660-000	110-000-1680-050	2011 Ford F650 w/ OKC Rodder attached	187,220.82	10	131,054.57	18,722.08	149,776.65	37,444.17
110	550	Infrastrucutre	110-000-1620-000	110-000-1680-010	Mud Zone MH - Harbor/Gate 5	20,085.00	65	4,017.00	309.00	4,326.00	15,759.00
110	550	Infrastrucutre	110-000-1620-000	110-000-1680-010	Johnson St Utility Improvements - Johnson St.	224,016.92	65	44,803.38	3,446.41	48,249.80	175,767.12
110	550	Infrastrucutre	110-000-1620-000	110-000-1680-010	Priority One Sewer Projects - Design Phase - Various	429,737.39	65	85,947.48	6,611.34	92,558.82	337,178.57
110	550	Equipment	110-000-1650-000	110-000-1680-040	5/16 x 48 Mean Green rods	1,610.65	10	1,610.65	-	1,610.65	-
110	550	Equipment	110-000-1650-000	110-000-1680-040	Aries Pathfinder TV Inspection	69,109.02	10	69,109.02	-	69,109.02	-
110	550	Equipment	110-000-1650-000	110-000-1680-040	DW-1236 De-watering Bin	4,133.50	10	4,133.50	-	4,133.50	-
110	550	Equipment	110-000-1650-000	110-000-1680-040	Cummins C150D6RT Dsl Gen	63,241.00	10	63,241.00	-	63,241.00	-
110	550	Equipment	110-000-1650-000	110-000-1680-040	5/16 x 48 rods w/coupling	2,464.50	10	2,464.50	-	2,464.50	-
110	550	Equipment	110-000-1650-000	110-000-1680-040	Toolboxes for Rodder Truck	19,964.00	10	19,964.00	-	19,964.00	-
110	550	Equipment	110-000-1650-000	110-000-1680-040	WCT Products Duct rodder	861.64	10	861.64	-	861.64	-
110	550	Equipment	110-000-1650-000	110-000-1680-040	UnNamed Item	12,400.50	10	12,400.50	-	12,400.50	-
110	550	Equipment	110-000-1650-000	110-000-1680-040	NexGen Asset Mgmt System	41,500.00	5	41,500.00	-	41,500.00	-
110	550	Infrastrucutre	110-000-1620-000	110-000-1680-010	Sewer Line Segments - Toyon/Woodward	69,679.60	65	11,791.93	1,071.99	12,863.93	56,815.67
110	550	Infrastrucutre	110-000-1620-000	110-000-1680-010	Planning, Design Improvements EPA Design	374,380.89	65	57,597.06	5,759.71	63,356.77	311,024.12
110	550	Infrastrucutre	110-000-1620-000	110-000-1680-010	Project Spinnaker / Humboldt - Priority 1 Sewer Replacement	1,318,418.96	65	202,833.69	20,283.37	223,117.05	1,095,301.91
110	550	Infrastrucutre	110-000-1620-000	110-000-1680-010	FY15 Urgent sewer projects - Various	43,170.42	65	5,977.44	664.16	6,641.60	36,528.82
110	550	Infrastrucutre	110-000-1620-000	110-000-1680-010	Cloudview Rd Sewer Ext Proj - Cloudview Rd	48,700.00	65	6,743.08	749.23	7,492.31	41,207.69
110	550	Infrastrucutre	110-000-1620-000	110-000-1680-010	FY15 Spinnaker/Anchor -	135,329.41	65	18,737.92	2,081.99	20,819.91	114,509.50
110	550	Infrastrucutre	110-000-1620-000	110-000-1680-010	Gate 5 Rd - Mgmt - Bond	6,345.50	65	780.98	97.62	878.60	5,466.90
110	550	Infrastrucutre	110-000-1620-000	110-000-1680-010	Beach St - Design - Bond	10,831.85	65	1,333.15	166.64	1,499.79	9,332.06
110	550	Infrastrucutre	110-000-1620-000	110-000-1680-010	Alex. Ave & Beach St-Design - Various	12,577.03	65	1,547.94	193.49	1,741.43	10,835.60
110	550	Infrastrucutre	110-000-1620-000	110-000-1680-010	MAGIORAG - Maggiora & Ghilotti, Inc - 20 Liberty Ship - Repair I	12,983.04	65	1,597.91	199.74	1,797.65	11,185.39
110	550	Infrastrucutre	110-000-1620-000	110-000-1680-010	Alex. Ave & Beach St-Design - Various	25,591.13	65	3,149.68	393.71	3,543.39	22,047.74
110	550	Infrastrucutre	110-000-1620-000	110-000-1680-010	Main St - Design - Bond	26,724.56	65	3,289.18	411.15	3,700.33	23,024.23
110	550	Infrastrucutre	110-000-1620-000	110-000-1680-010	Gate 5 Road Design - Various	46,569.88	65	5,731.68	716.46	6,448.14	40,121.74
110	550	Infrastrucutre	110-000-1620-000	110-000-1680-010	LINSCOTT - Linscott Linscott Eng Contractors Inc - Emerg Sewer I	47,329.93	65	5,825.22	728.15	6,553.37	40,776.56
110	550	Infrastrucutre	110-000-1620-000	110-000-1680-010	Main Street Design - Various	55,125.75	65	6,784.71	848.09	7,632.80	47,492.95
110	550	Infrastrucutre	110-000-1620-000	110-000-1680-010	BRENEMAN - Breneman, Inc - ADA BP 2, 6 and 7	56,183.05	65	6,914.84	864.35	7,779.19	48,403.86
110	550	Infrastrucutre	110-000-1620-000	110-000-1680-010	Main Street - Construction - Various	59,065.25	65	7,269.57	908.70	8,178.27	50,886.98
110	550	Infrastrucutre	110-000-1620-000	110-000-1680-010	Gate 5 Rd - Design - Bond	76,215.73	65	9,380.40	1,172.55	10,552.95	65,662.78
110	550	Infrastrucutre	110-000-1620-000	110-000-1680-010	HARDIMAN - Thomas Hardiman dba Hardiman Construction - Er	108,558.63	65	13,361.06	1,670.13	15,031.19	93,527.44
110	550	Infrastrucutre	110-000-1620-000	110-000-1680-010	Gate 5 Road Design - Various	113,718.67	65	13,996.14	1,749.52	15,745.66	97,973.01
110	550	Infrastrucutre	110-000-1620-000	110-000-1680-010	Main St - Mgmt - Bond	143,638.64	65	17,678.61	2,209.83	19,888.43	123,750.21
110	550	Infrastrucutre	110-000-1620-000	110-000-1680-010	Main Street Design - Various	174,606.26	65	21,490.00	2,686.25	24,176.25	150,430.01
110	550	Infrastrucutre	110-000-1620-000	110-000-1680-010	CRATUS - Cratus Inc - Glen Ct Sewer	198,920.00	65	24,482.46	3,060.31	27,542.77	171,377.23
110	550	Infrastrucutre	110-000-1620-000	110-000-1680-010	Main St - Const - Bond	865,097.42	65	106,473.53	13,309.19	119,782.72	745,314.70
110	550	Infrastrucutre	110-000-1620-000	110-000-1680-010	Nevada St Mgmt Bond	3,170.00	65	341.38	48.77	390.15	2,779.85
110	550	Infrastrucutre	110-000-1620-000	110-000-1680-010	Gate 5 Rd Design Bond	14,048.15	65	1,512.88	216.13	1,729.00	12,319.15
110	550	Infrastrucutre	110-000-1620-000	110-000-1680-010	Gate 5 Rd Mgmt Bond	24,605.00	65	2,649.77	378.54	3,028.31	21,576.69
110	550	Infrastrucutre	110-000-1620-000	110-000-1680-010	Urgent Repairs Mgmt Bond	29,491.95	65	3,176.06	453.72	3,629.78	25,862.17
110	550	Infrastrucutre	110-000-1620-000	110-000-1680-010	Gate 5 Rd Const Bond	51,119.00	65	5,505.12	786.45	6,291.57	44,827.43
110	550	Infrastrucutre	110-000-1620-000	110-000-1680-010	Unplanned Repairs Const Bond	55,295.18	65	5,954.87	850.70	6,805.56	48,489.62
110	550	Infrastrucutre	110-000-1620-000	110-000-1680-010	Urgent Repairs Const Bond	305,358.54	65	32,884.77	4,697.82	37,582.59	267,775.95
110	550	Infrastrucutre	110-000-1620-000	110-000-1680-010	Gate 5 Rd - Const - Bond	139,954.23	65	12,918.85	2,153.14	15,071.99	124,882.24
110	550	Infrastrucutre	110-000-1620-000	110-000-1680-010	Nevada St - Const - Bond	92,558.48	65	4,271.93	1,423.98	5,695.91	86,862.57
110	550	Equipment	110-000-1650-000	110-000-1680-040	Anchor and Spinnaker Sewer Pump Generators	507,087.00	25	20,283.48	20,283.48	40,566.96	466,520.04

110	550	Vehicles	110-000-1660-000	110-000-1680-050	2023 CHEVY SILVERADO 1500	47,388.55	5	-	9,477.71	9,477.71	37,910.84
-----	-----	----------	------------------	------------------	---------------------------	-----------	---	---	----------	----------	-----------

Exhibit D
Sewer Location Map

See attached.

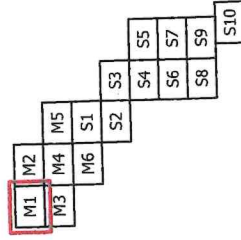
SMCSD Sewer MapBook

Structure

- ARV
- Grade Break
- Pump Station
- Sewer Manhole
- Sewer Rod Inlet
- Sausalito MH
- Valve
- Catch Basin

Agency

- SMCSD
- TCS D
- Abandoned
- NPS/GGNRA
- City of Sausalito
- Index Grid
- Sewer Laterals



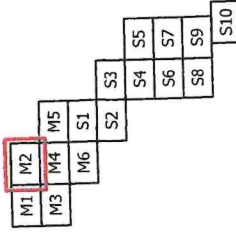
SMCSD Sewer MapBook

Structure

- ARV
- Grade Break
- Pump Station
- Sewer Manhole
- Sewer Rod Inlet
- Sausalito MH
- Valve
- Catch Basin

Agency

- SMCSD
- TCSO
- Abandoned
- NPS/GGNRA
- City of Sausalito
- Index Grid
- Sewer Laterals



Index Grid: M2

0 125 250 500 US Feet

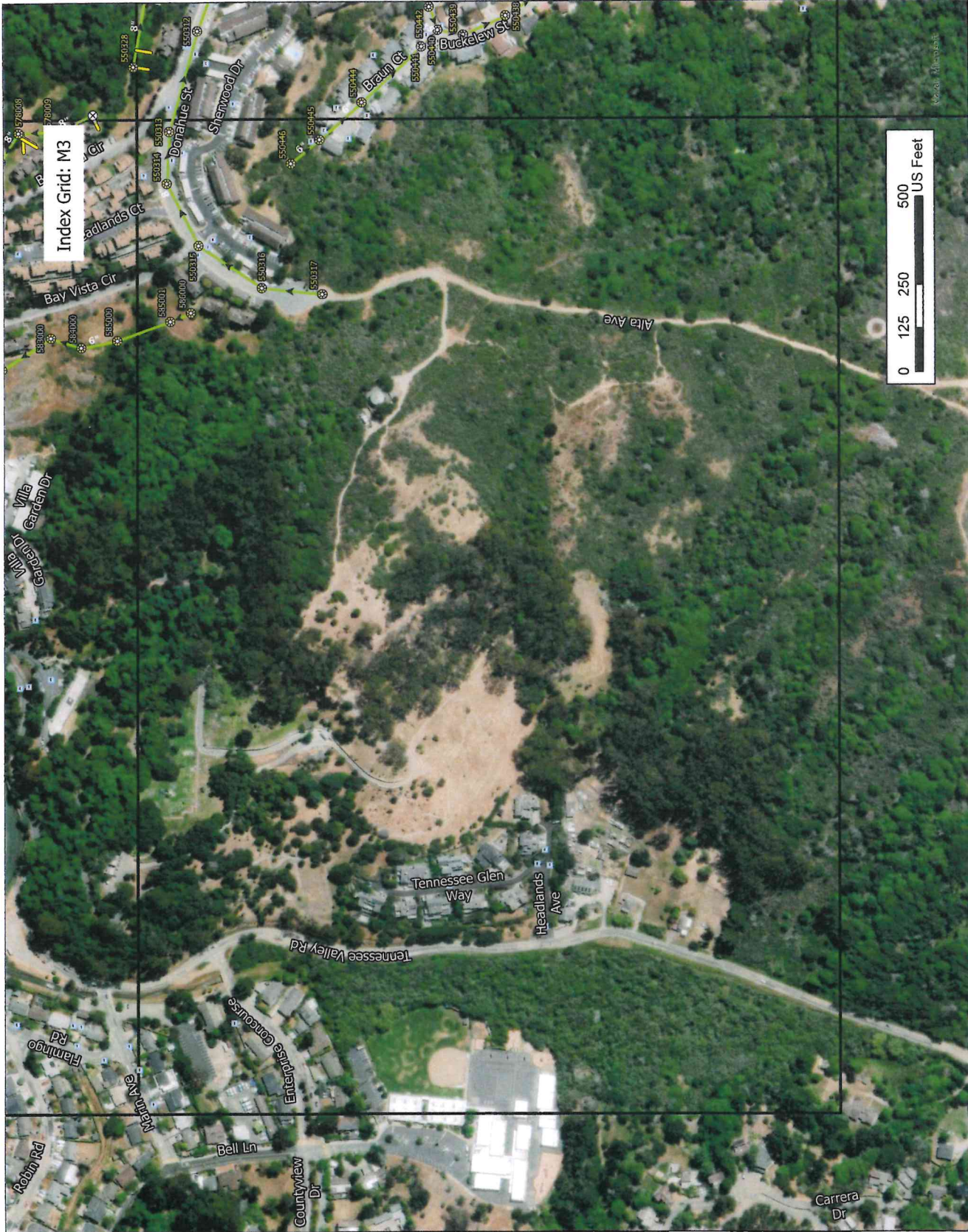
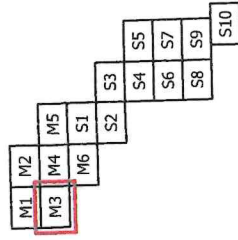
SMCSD Sewer MapBook

Structure

- ARV
- Grade Break
- Pump Station
- Sewer Manhole
- Sewer Rod Inlet
- Sausalito MH
- Valve
- Catch Basin

Agency

- SMCSD
- TCS
- Abandoned
- NPS/GGNRA
- City of Sausalito
- Index Grid
- Sewer Laterals



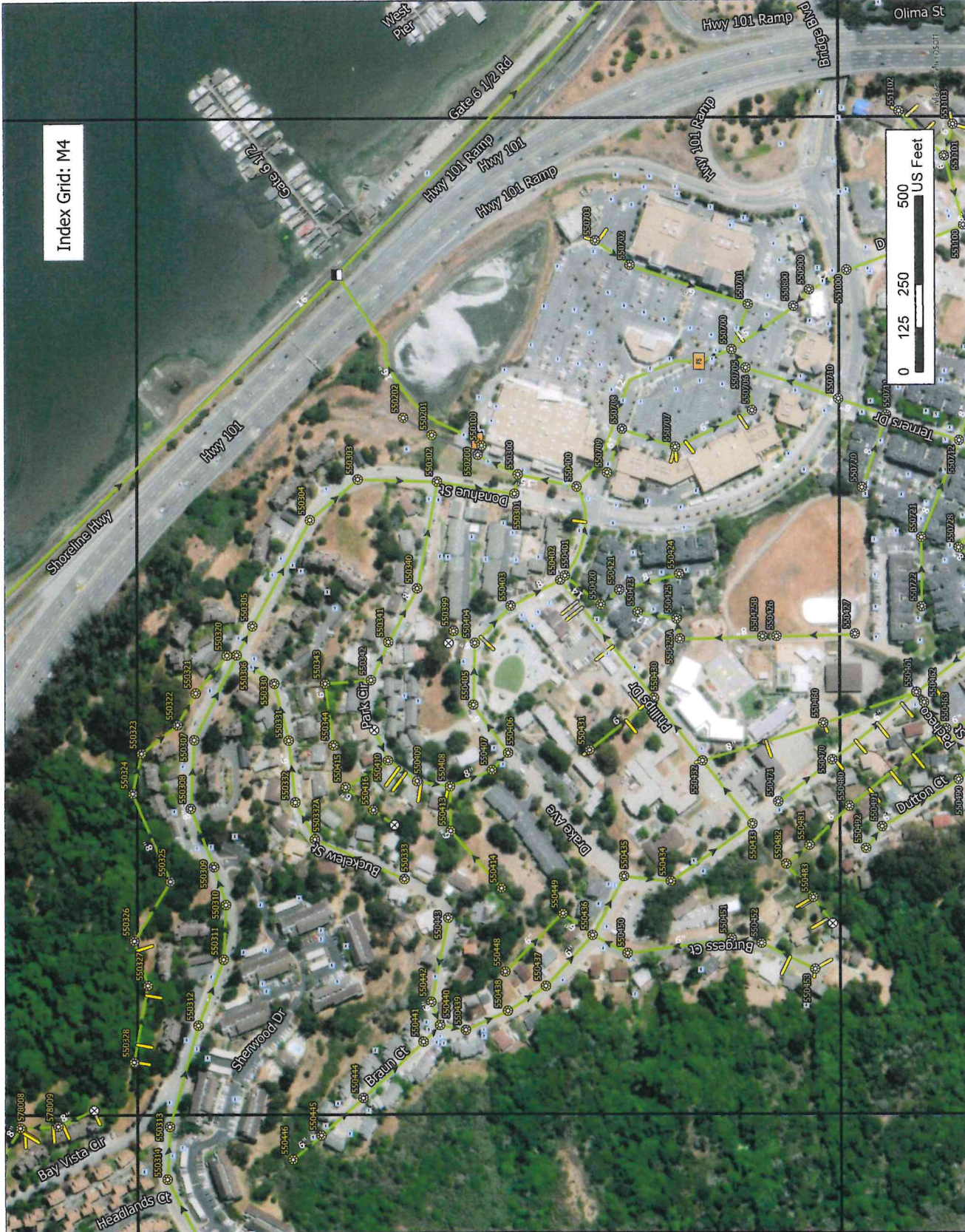
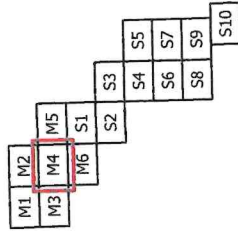
SMCSD Sewer MapBook

Structure

- ARV
- Grade Break
- Pump Station
- Sewer Manhole
- Sewer Rod Inlet
- Sausalito MH
- Valve
- Catch Basin

Agency

- SMCSD
- TCSO
- Abandoned
- NPS/GGNRA
- City of Sausalito
- Index Grid
- Sewer Laterals



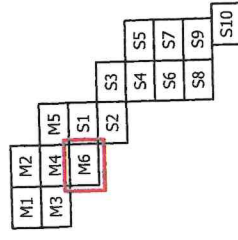
SMCSD Sewer MapBook

Structure

- ARV
- Grade Break
- Pump Station
- Sewer Manhole
- Sewer Rod Inlet
- Sausalito MH
- Valve
- Catch Basin

Agency

- SMCSD
- TCS D
- Abandoned
- NPS/GGNRA
- City of Sausalito
- Index Grid
- Sewer Laterals



Index Grid: M6

0 125 250 500 US Feet

SMCSD Sewer MapBook

Structure

- ARV
- Grade Break
- Pump Station
- Sewer Manhole
- Sewer Rod Inlet
- Sausalito MH
- Valve
- Catch Basin

Agency

- SMCSD
- TCS
- Abandoned
- NPS/GNRA
- City of Sausalito
- Index Grid
- Sewer Laterals

M1	M2	M3	M4	M5	M6	S1	S2	S3	S4	S5	S6	S7	S8	S9	S10
----	----	----	----	----	----	----	----	----	----	----	----	----	----	----	-----



Index Grid: S1



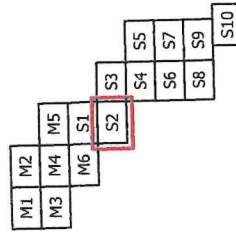
SMCSD Sewer MapBook

Structure

- ARV
- Grade Break
- Pump Station
- Sewer Manhole
- Sewer Rod Inlet
- Sausalito MH
- Valve
- Catch Basin

Agency

- SMCSD
- TCSO
- Abandoned
- NPS/GGNRA
- City of Sausalito
- Index Grid
- Sewer Laterals



SMCSD Sewer MapBook

Structure

- ARV
- Grade Break
- Pump Station
- Sewer Manhole
- Sewer Rod Inlet
- Sausalito MH
- Valve
- Catch Basin

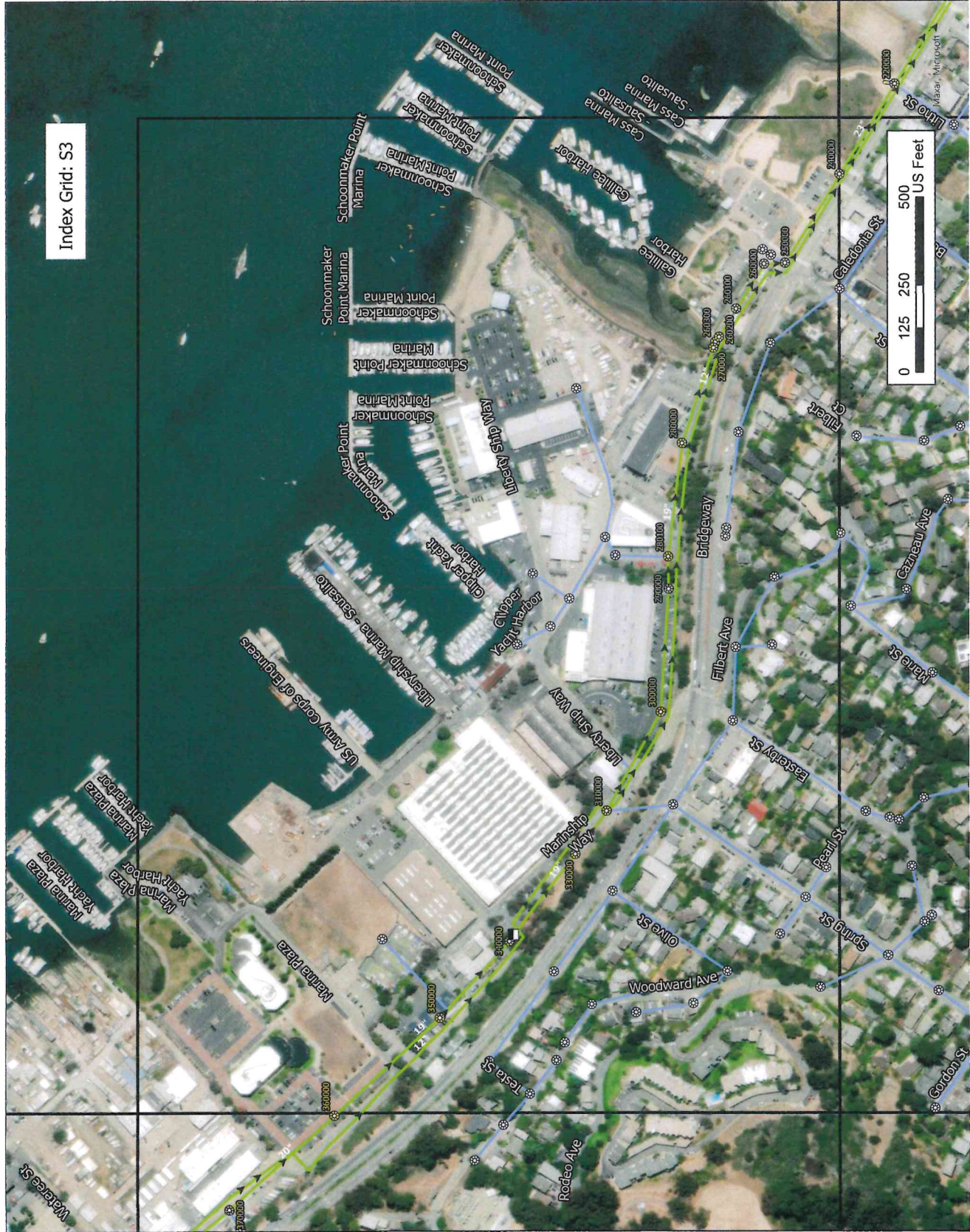
Agency

- SMCSD
- TCS D
- Abandoned
- NPS/GGNRA
- City of Sausalito
- Index Grid
- Sewer Laterals

M1	M2	M3	M4	M5	M6	S1	S2	S3	S4	S5	S6	S7	S8	S9	S10
----	----	----	----	----	----	----	----	----	----	----	----	----	----	----	-----



Index Grid: S3



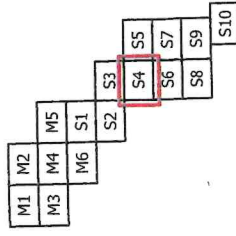
SMCSD Sewer MapBook

Structure

- ARV
- Grade Break
- Pump Station
- Sewer Manhole
- Sewer Road Inlet
- Sausalito MH
- Valve
- Catch Basin

Agency

- SMCSD
- TCS
- Abandoned
- NPS/GNRA
- City of Sausalito
- Index Grid
- Sewer Laterals



SMCSD Sewer MapBook

Structure

- ARV
- Grade Break
- Pump Station
- Sewer Manhole
- Sewer Rod Inlet
- Sausalito MH
- Valve
- Catch Basin

Agency

- SMCSD
- TCS
- Abandoned
- NPS/GGNRA
- City of Sausalito
- Index Grid
- Sewer Laterals

M1	M2	M3	M4	M5	M6	S1	S2	S3	S4	S5	S6	S7	S8	S9	S10
----	----	----	----	----	----	----	----	----	----	----	----	----	----	----	-----



Index Grid: S5



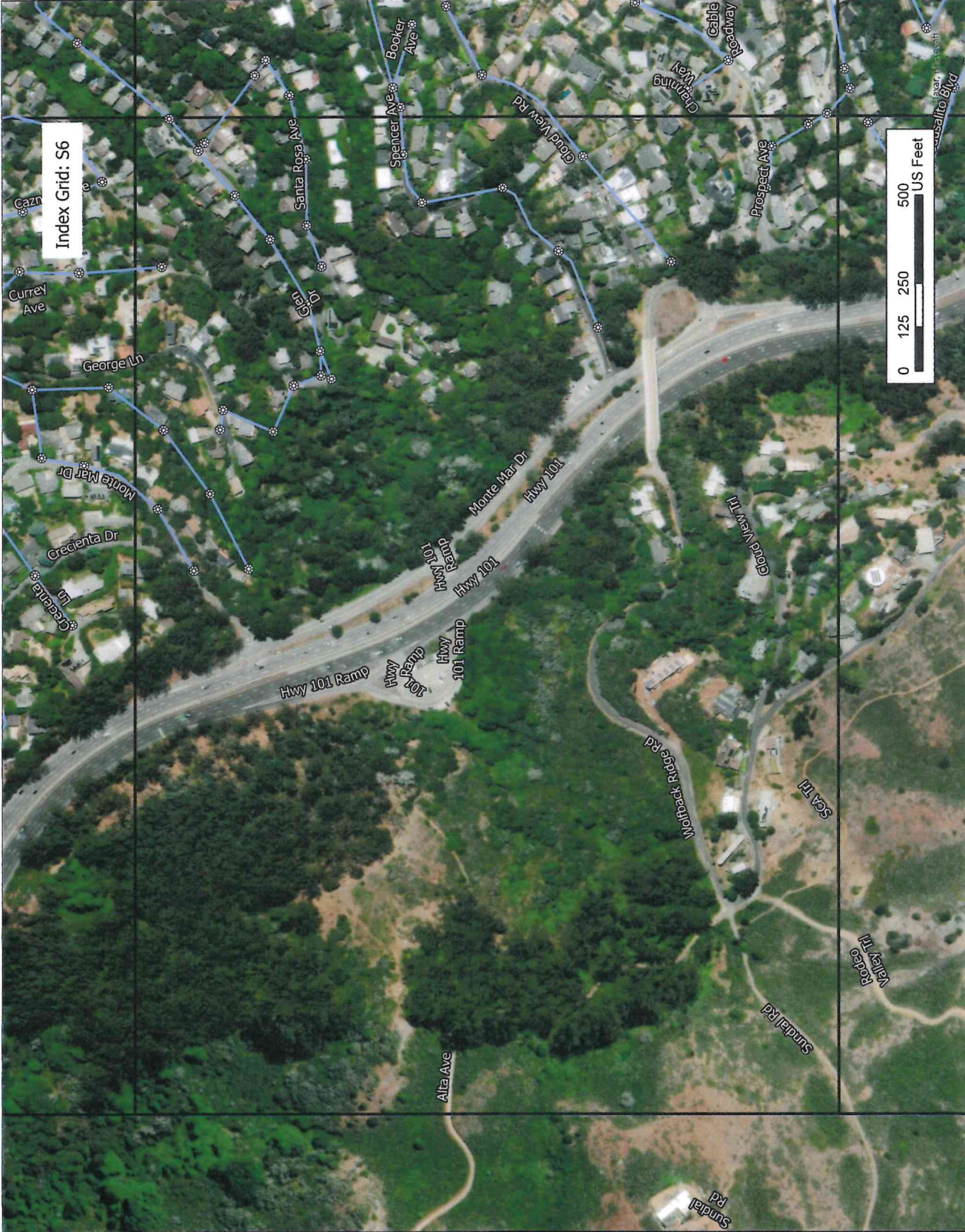
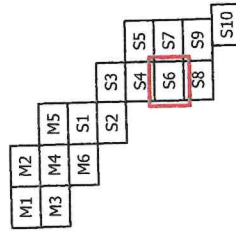
SMCSD Sewer MapBook

Structure

- ARV
- Grade Break
- Pump Station
- Sewer Manhole
- Sewer Rod Inlet
- Sausalito MH
- Valve
- Catch Basin

Agency

- SMCSD
- TCSO
- Abandoned
- NPS/GGNRA
- City of Sausalito
- Index Grid
- Sewer Laterals



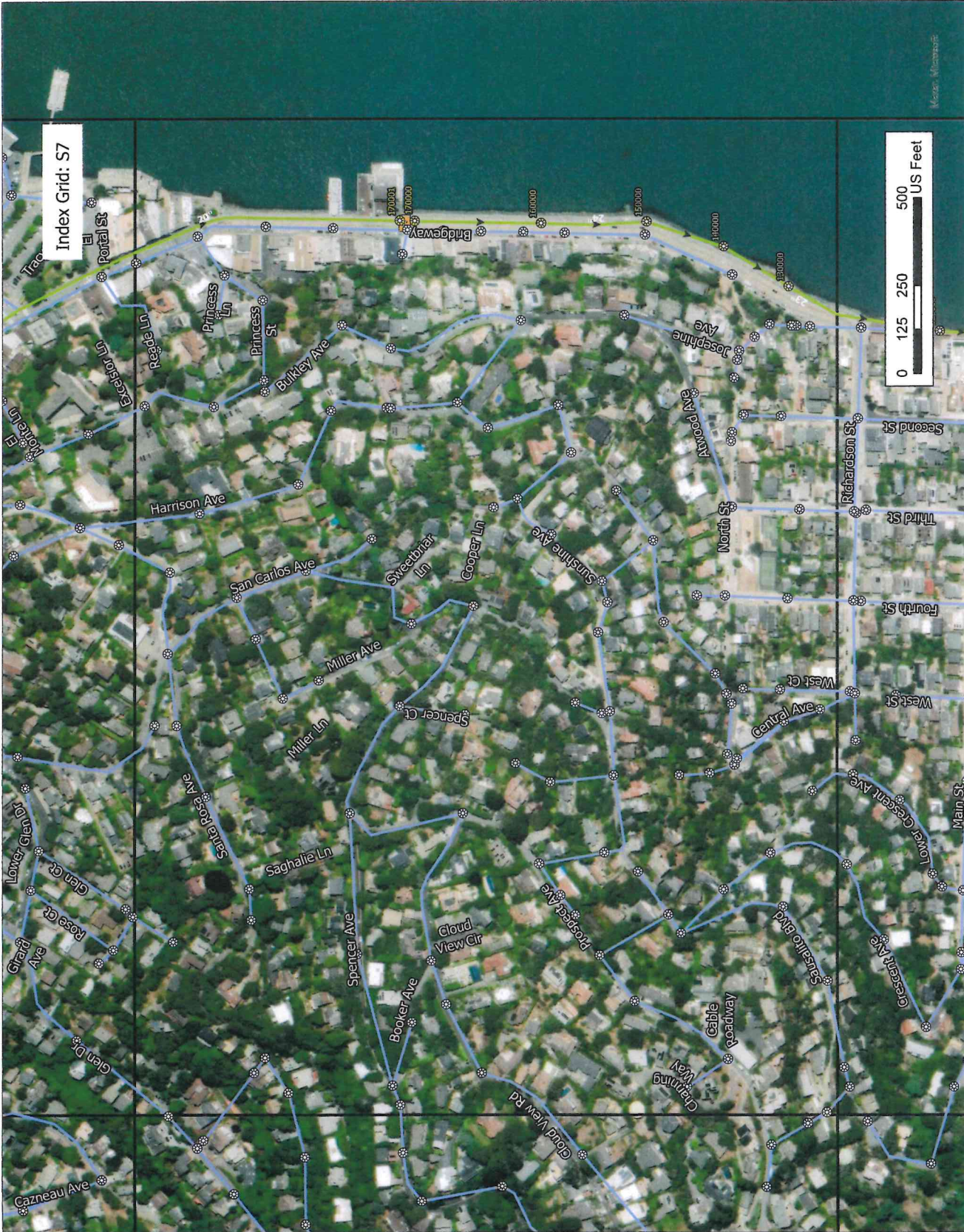
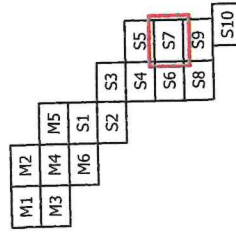
SMCSD Sewer MapBook

Structure

- ARV
- Grade Break
- Pump Station
- Sewer Manhole
- Sewer Rod Inlet
- Sausalito MH
- Valve
- Catch Basin

Agency

- SMCSD
- TCSO
- Abandoned
- NPS/GGNRA
- City of Sausalito
- Index Grid
- Sewer Laterals



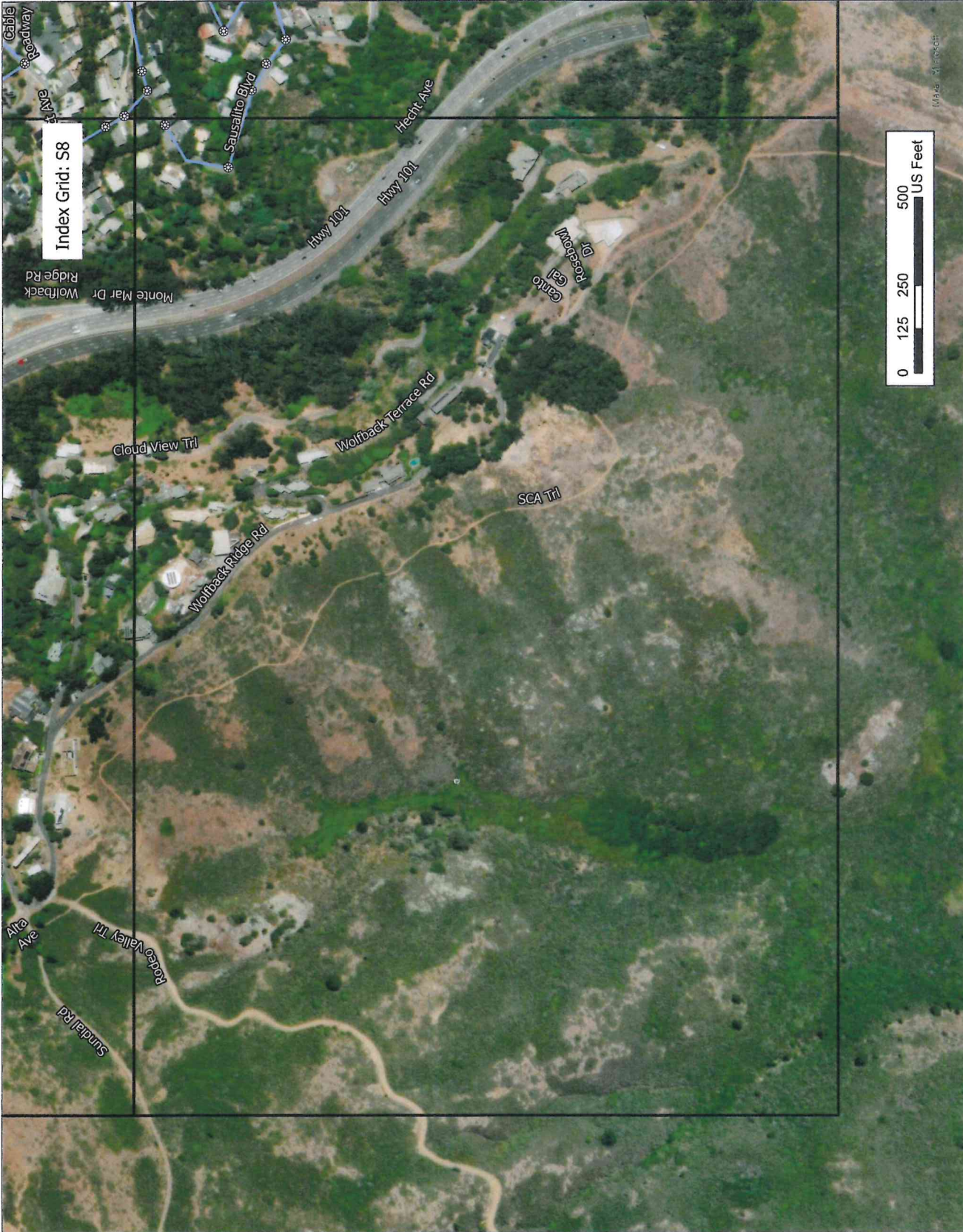
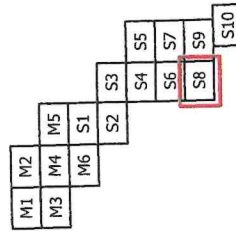
SMCSD Sewer MapBook

Structure

- ARV
- Grade Break
- Pump Station
- Sewer Manhole
- Sewer Rod Inlet
- Sausalito MH
- Valve
- Catch Basin

Agency

- SMCSD
- TCSO
- Abandoned
- NPS/GGNRA
- City of Sausalito
- Index Grid
- Sewer Laterals



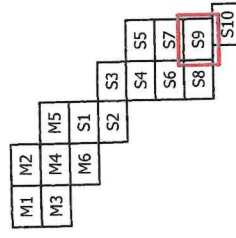
SMCSD Sewer MapBook

Structure

- ARV
- Grade Break
- Pump Station
- Sewer Manhole
- Sewer Rod Inlet
- Sausalito MH
- Valve
- Catch Basin

Agency

- SMCSD
- TCS D
- Abandoned
- NPS/GGNRA
- City of Sausalito
- Index Grid
- Sewer Laterals



SMCSD Sewer MapBook

Structure

- ARV
- Grade Break
- Pump Station
- Sewer Manhole
- Sewer Rod Inlet
- Sausalito MH
- Valve
- Catch Basin

Agency

- SMCSD
- TCS D
- Abandoned
- NPS/GGNRA
- City of Sausalito
- Index Grid
- Sewer Laterals

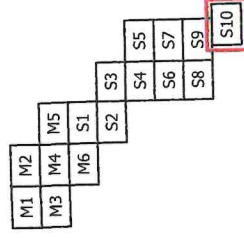


Exhibit E
Equipment & Vehicles to be Transferred to the District
(Highlighted in Green)

See attached.

**CITY OF SAUSALITO
SANITARY SEWER VEHICLE AND EQUIPMENT INVENTORY
2025**

Item	Vehicle/ Equipm ent #	Description	Year	Original Cost	Comments	VIN	License Plate No.	Notes
	SC-2	Silverado 1500 Quad Cab WT	2023	\$ 42,283.45	Sewer Coordinator Truck	3GCPAAEK8PG239636	1680172	
	S3	Chevy 2500	1997	\$ 21,395.00	DPW Truck used by Sewer Crew	1GCGC2456WZ168878	E 100665	Needs replacing
	N/A	Self Propelled Color Sewer Camera	2011	\$ 54,756.15	Aries PE 3400 Path Finder Reel capacity 1000'		N/A	Needs to be updated, not used. Vehicle that it was mounted in went to auction
	121	Ford F-650 Super Cab XL	2011	\$ 64,049.00	Vehicle cab and chassis for Rodder	3FRXX6FE8BV397017	1320925	
		OK Champion Power Rodder	2011	\$ 116,000.00	Truck mounted continuous power rodder (8k) .393 d rod		N/A	
	122	International 4000 Max Force DT Dura Star	2008	\$ 234,285.00	3 cubic yard mobile combination sewer cleaning vehicle (aka: Vactor)	iHTMMAAL39H090170	1266046	
	N/A	Electronic Pipe Locators (2)	2000/2003	\$ 5,000.00	1250 each		N/A	Needs to be updated
	N/A	Radio Detection Pipe Locator	2007	\$ 3,000.00	Transmitter emits 512 Hz X 2		N/A	
	N/A	Confined Space Entry Equipment					N/A	
	N/A	Tri-Pod	2006	\$ 2,800.00	With 2 wenches and 2 harnesses	N/A	N/A	
	N/A	Air Ventilator	2000	\$ 250.00	1300 series Axial Blower 1375B	1411	N/A	
	N/A	Ventis MX4 Gas Alert (3)	2003	\$ 4,500.00	3 hand-held gas detector (4 gas model)		N/A	
		Ventis Gas Alert Docking Station (2)					N/A	
	N/A	Laptop Computer System (2)	2018		Coordinator computer X2 Zbook		N/A	Eg current, PG old. Same model. IT rebuilding PG
		HP Monitors 32" X2		\$1,800.00	Sewer Coordinators office		N/A	Currently use
	N/A	Laptop Computer System (2)	2023		Sewer Staff Computer X 2		N/A	2 loaned out within the city?
	N/A	iPad (3)	2023		Coordinator and staff X3		N/A	2 loaned out within the city?
	N/A	iPhone (3)	Varies		Coordinator and Staff X3		N/A	2 loaned out within the city?
	N/A	Honda EV2000 Generator			Camera Truck Power Supply		N/A	
	N/A	Electric Snake Machine (Red)			Electric Hand Snake 5/8"	8290113	N/A	
	N/A	CityWorks CMMS	2018/non-renewal 2025	\$ 750,000.00	Database of Entire SS System, Scheduling, Service Calls		N/A	CMMS need to be updated. No longer contract with CityWorks or any CMMS
	N/A	AutoCAD Programming	Annual	\$ 1,600.00	1600 annual membership		N/A	No longer have.
		Smart cover Equip & Tools	12/24-1/2/25	com	support, maint tool, repair parts + 1 new install kit			
SSO Response Equipment								
	N/A	Godwin Dri-Prime Transfer Pump	2010		Godwin Model CD150M 6" 1/2 owned with SMCSO			
	N/A	SSO Response Two axle Trailer			Sewer Overflow Trailer with 50 barricades, 20 18" reflective cones.		N/A	SMCSO may not have in possession anymore
	NA				400 x 4" lay flat hose, 300' x 6" lay flat, 80' of ridged suction side with camlocks, toolbox with required tools, adapters, etc. Additional 30' of 6" and 4"		N/A	
		4" Honda Trash Pump				GC05-4131487	N/A	
	N/A	Cummins Mobil Gen Set	2011	?	Cummins QSB7 Engine with Power Comand	1M9DA19B4CM646886		Most likely 100% Enterprise funds
BOLDED ITEMS WERE PURCHASED WITH 50% SEWER FUNDS ONLY. ALL OTHERS ARE 100% SEWER FUNDING.								
	M-1	Ford Escape	2005	\$ 20,040.00	Sport Utility Vehicle Pats Vehicle	1FMYU03115KB31859	E 1186885	Might be in Maintenance inventory, Formally coordinator vehicle SC-1
	119	John Deere 310D Backhoe	1996	\$ 67,225.00	Extend Hoe	T0310DG817986	N/A	Needs replacing
	106	International Dump Truck	1999	\$ 64,342.00	Automatic	14TSCAAN7X4225899	1008962	
	N/A	Wacker		\$ 1,200.00	Viber-plate compaction machine		N/A	
	N/A	Air Compressor	1997	\$ 1,700.00	Towable Air Compressor for breaking ground			
					city purchased enterprise fund			
	***	Transfer to SMCSO	***					